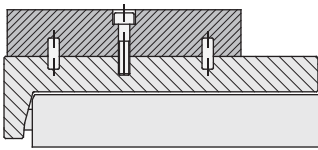


Slitte pneumatiche (serie ZA)

- Alesaggio 2x6, 2x8, 2x12, 2x16 oppure 2x20 mm.
- Corsa da 10 mm a 150mm.
- Fine corsa opzionali regolabili con deceleratore, elastomero (FGD) o vite (FPD).
- Sensori magnetici opzionali.

Pneumatic slides (series ZA)

- Piston bore: 2x6, 2x8, 2x12, 2x16 or 2x20 mm.
- Stroke from 10 to 150 mm.
- Optional end stroke adjusters with shock-absorber, rubber bumper (FGD) or grub screw (FPD).
- Optional proximity magnetic sensors.



Fori di centraggio calibrati per il fissaggio del carico sul carrello
Dowel pin holes for work piece positioning on the top of the carrier

Cartucce a ricircolo di sfere brevettate
Patented recirculating ball-bearings



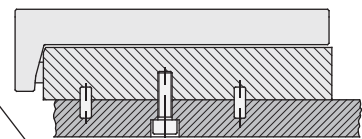
Carrello monoblocco stampato in zama
One-block carrier moulded in zamak



Guida temprata con piste rettificate
Hardened guideway with overgrinded raceways

Viti di regolazione del precarico
Preload adjustment screws

Fori filettati per il fissaggio della slitta
Threaded holes for slide mounting

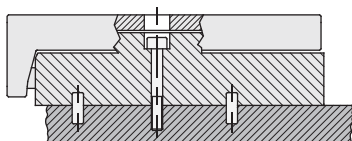
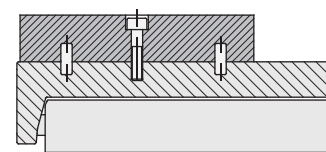


Ingresso aria per chiusura slitta
Air port for slide retraction

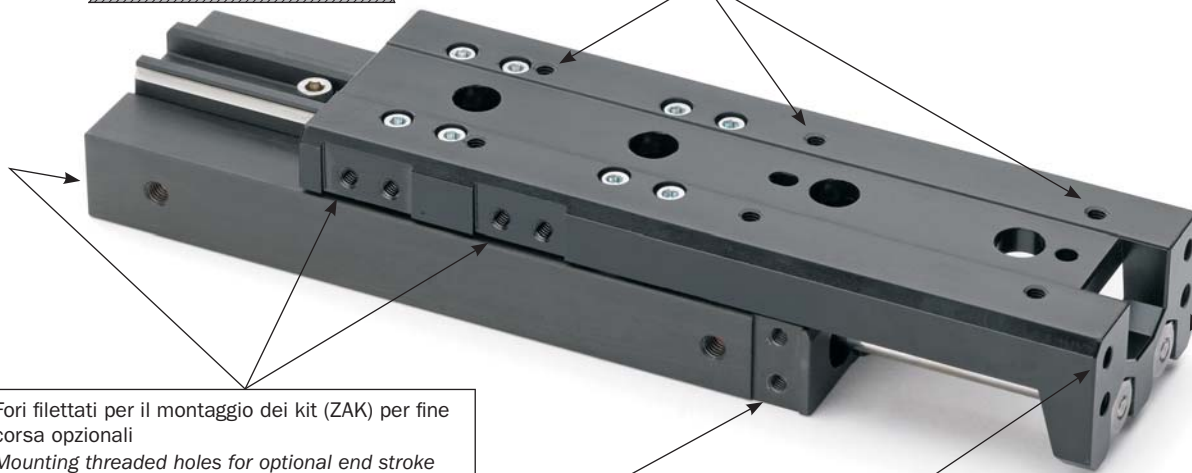
Ingresso aria per apertura slitta
Air port for slide extension

Slitte pneumatiche (serie ZA) / Pneumatic slides (series ZA)

Fori per l'introduzione di viti passanti nel corpo per il fissaggio della slitta
Passing holes for slide fastening by through screws



Fori filettati per il fissaggio del carico sul carrello
Threaded holes for work piece mounting on the carrier top

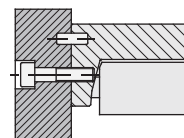


Fori filettati per il montaggio dei kit (ZAK) per fine corsa opzionali
Mounting threaded holes for optional end stroke (ZAK)

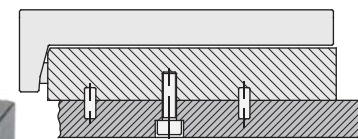
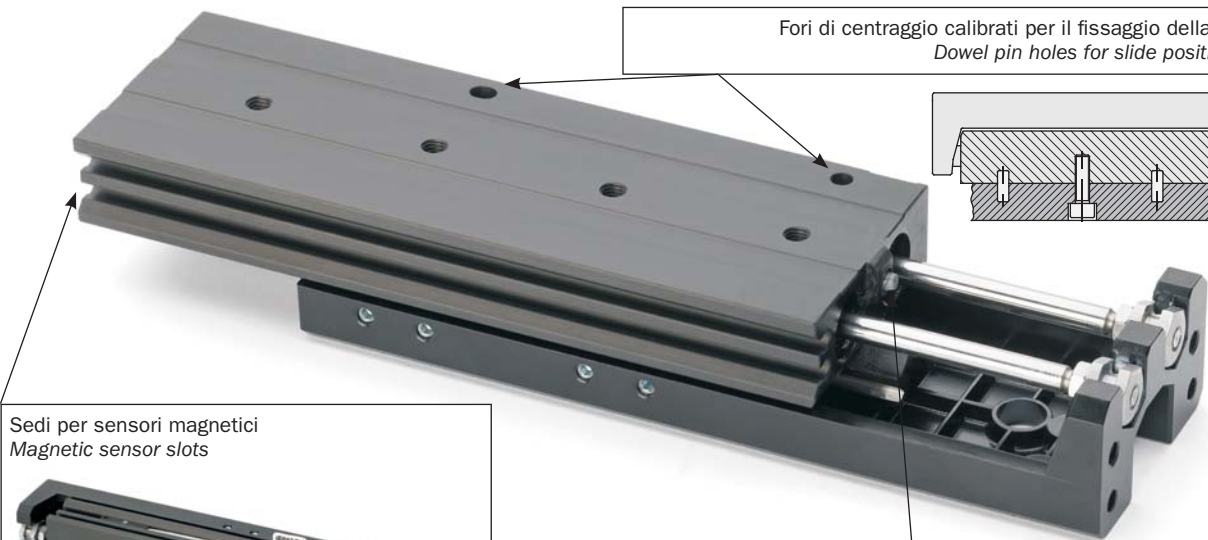


Fori filettati per il fissaggio anteriore del carico
Threaded holes for work piece mounting on the front face of the carrier

Fori di centraggio calibrati per il fissaggio anteriore del carico
Dowel pin holes for work piece positioning on the front face of the carrier



Fori di centraggio calibrati per il fissaggio della slitta
Dowel pin holes for slide positioning



Sedi per sensori magnetici
Magnetic sensor slots



Fine corsa in chiusura
Retraction end stroke

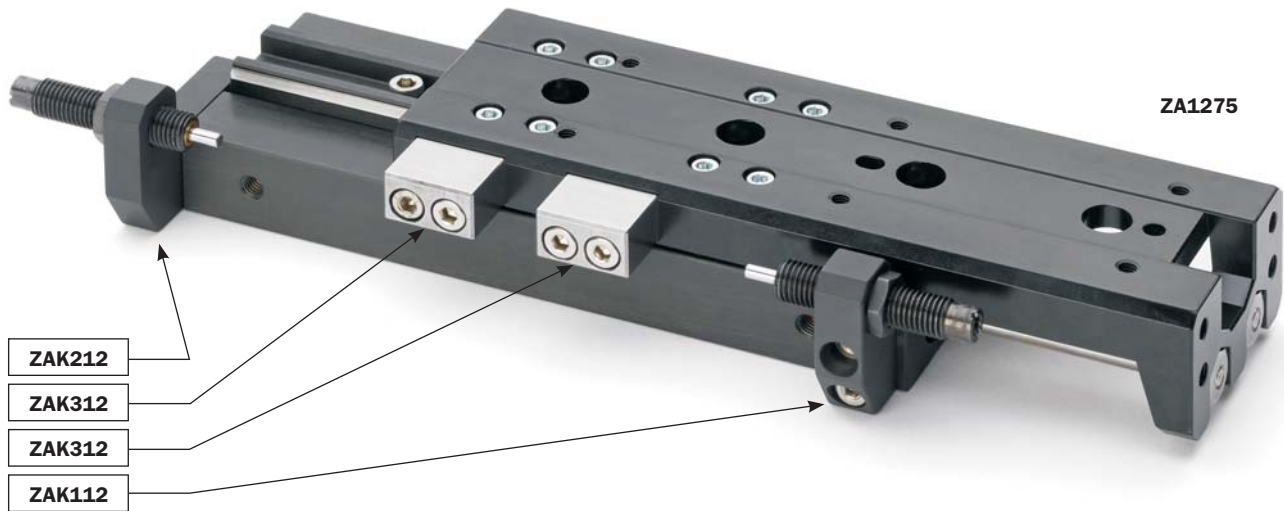


Accessori

Per la regolazione della corsa si possono utilizzare deceleratori idraulici, ammortizzatori di gomma (FGD) o grani (FPD), a seconda dell'energia cinetica che l'unità deve sopportare. Per l'utilizzo di questi si devono montare sulla slitta gli accessori di fissaggio (ZAK).

Accessories

The stroke can be adjusted by shock-absorbers, rubber bumpers (FGD), or grub screws (FPD), according with the kinetic energy the slide has to bear. The bracket and stoppers (ZAK) are necessary to mount the adjusters.



- ZAK212
- ZAK312
- ZAK312
- ZAK112

Codice di ordinazione / Ordering code: **ZAK112**

- Allesaggio / Bore
- 1 Supporto per fine corsa di apertura / Bracket for extension adjustment
- 2 Supporto per fine corsa di chiusura / Bracket for retraction adjustment
- 3 Battuta / Stopper (*)

(*)
Sulle slitte a corsa lunga ne sono necessari due; verificare alla pagina delle dimensioni.
On the long stroke slides, two stoppers are necessary; check on the dimensions page.

Tutti gli accessori di fissaggio (ZAK) includono le viti per il fissaggio alla slitta. Il filetto di queste viti deve essere incollato con frena filetti a media resistenza, per evitare lo svitamento dovuto alle vibrazioni.

The ZAK accessories are provided with the necessary screws. These ones must be glued by an anaerobic adhesive (medium resistance), to avoid unscrewing due to vibrations.

La tabella mostra i codici dei deceleratori idonei. I fine corsa opzionali FGD e FPD sono prodotti Gimatic.

The table shows the codes of the suitable shock-absorbers. The optional FGD and FPD are Gimatic products.

Deceleratori idraulici / Hydraulic shock-absorbers

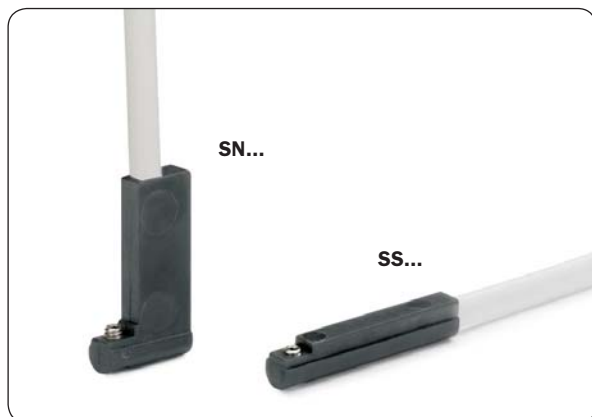


ZA06	M6x0.5	MC9M1	TKSM2	FGD0620 (L=20 mm)	FPD0620 (L=20 mm)
ZA08	M6x0.5	MC9M1	TKSM2	FGD0620 (L=20 mm)	FPD0620 (L=20 mm)
ZA12	M8x1	MC10ML	PMX8MC-3	FGD0830 (L=30 mm)	FPD0830 (L=30 mm)
ZA16	M10x1	MC25M-NB	TK10M-4	FGD1030 (L=30 mm)	FPD1030 (L=30 mm)
ZA20	M12x1	MC75M3-NB	PM15MF-2	FGD1235 (L=35 mm)	FPD1235 (L=35 mm)

Sensori

Il rilevamento della posizione di lavoro è affidato a uno o più sensori magnetici di prossimità (opzionali), che rilevano la posizione attraverso il magnete sul pistone. Quindi, per un corretto funzionamento, è da evitare l'impiego in presenza di forti campi magnetici od in prossimità di grosse masse di materiale ferromagnetico.

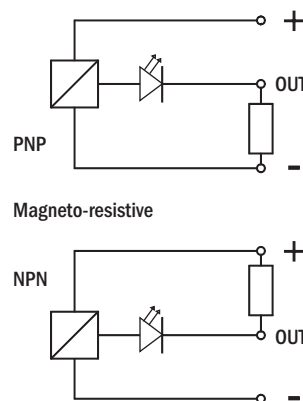
I sensori utilizzabili sono:



Sensors

The operating position is detected by magnetic proximity sensors (optional) through a magnet placed on the piston. The use of magnetic proximity sensors is therefore to be avoided in the vicinity of large masses of ferromagnetic material or intense magnetic fields as this may cause detection problems.

The sensors that can be used are:



			ZA06	ZA08	ZA12	ZA16	ZA20
SN4N225-G	PNP	2.5m cable	✓	✓	✓	✓	✓
SN4M225-G	NPN	2.5m cable	✓	✓	✓	✓	✓
SN3N203-G	PNP	M8 connector	✓	✓	✓	✓	✓
SN3M203-G	NPN	M8 connector	✓	✓	✓	✓	✓
SS4N225-G	PNP	2.5m cable	✓	✓	✓	✓	✓
SS4M225-G	NPN	2.5m cable	✓	✓	✓	✓	✓
SS3N203-G	PNP	M8 connector	✓	✓	✓	✓	✓
SS3M203-G	NPN	M8 connector	✓	✓	✓	✓	✓

Sono tutti dotati di un cavo piatto a tre fili e di un led.

They are all provided with a flat three-wire cable and lamp.

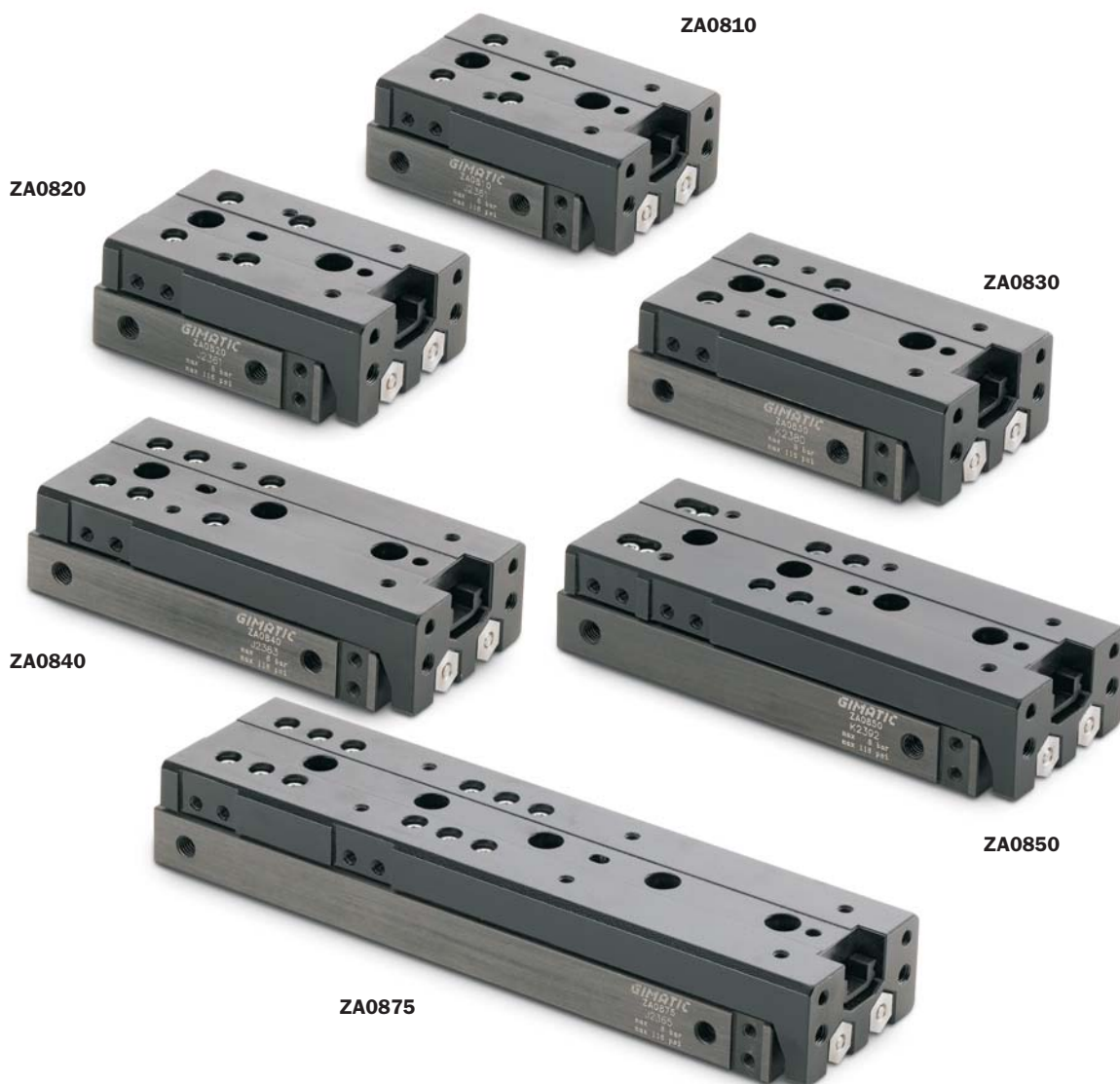


ATTUATORI LINEARI
LINEAR ACTUATORS

	ZA0610	ZA0620	ZA0630	ZA0640	ZA0650
Fluido Medium	Aria compressa filtrata, lubrificata / non lubrificata Filtered, lubricated / non lubricated compressed air				
Pressione di esercizio Pressure range	3 ÷ 8 bar				
Temperatura di esercizio Temperature range	5° ÷ 60°C.				
Forza di apertura a 6 bar Extension force at 6 bar	29 N				
Forza di chiusura a 6 bar Retraction force at 6 bar	22 N				
Corsa totale massima Maximum total stroke	10 mm	20 mm	30 mm	40 mm	50 mm
Tempo di azionamento minimo Minimum actuating time	0.03 s	0.04 s	0.05 s	0.06 s	0.08 s
Consumo d'aria per ciclo Cycle air consumption	1 cm ³	2 cm ³	3 cm ³	5 cm ³	6 cm ³
Peso Weight	100 g	120 g	135 g	170 g	205 g



	ZA0810	ZA0820	ZA0830	ZA0840	ZA0850	ZA0875
Fluido Medium	Aria compressa filtrata, lubrificata / non lubrificata Filtered, lubricated / non lubricated compressed air					
Pressione di esercizio Pressure range	2.5 ÷ 8 bar					
Temperatura di esercizio Temperature range	5° ÷ 60°C.					
Forza di apertura a 6 bar Extension force at 6 bar	51 N					
Forza di chiusura a 6 bar Retraction force at 6 bar	38 N					
Corsa totale massima Maximum total stroke	10 mm	20 mm	30 mm	40 mm	50 mm	75 mm
Tempo di azionamento minimo Minimum actuating time	0.03 s	0.05 s	0.08 s	0.11 s	0.15 s	0.2 s
Consumo d'aria per ciclo Cycle air consumption	3 cm ³	4 cm ³	6 cm ³	8 cm ³	11 cm ³	16 cm ³
Peso Weight	170 g	185 g	215 g	270 g	310 g	450 g

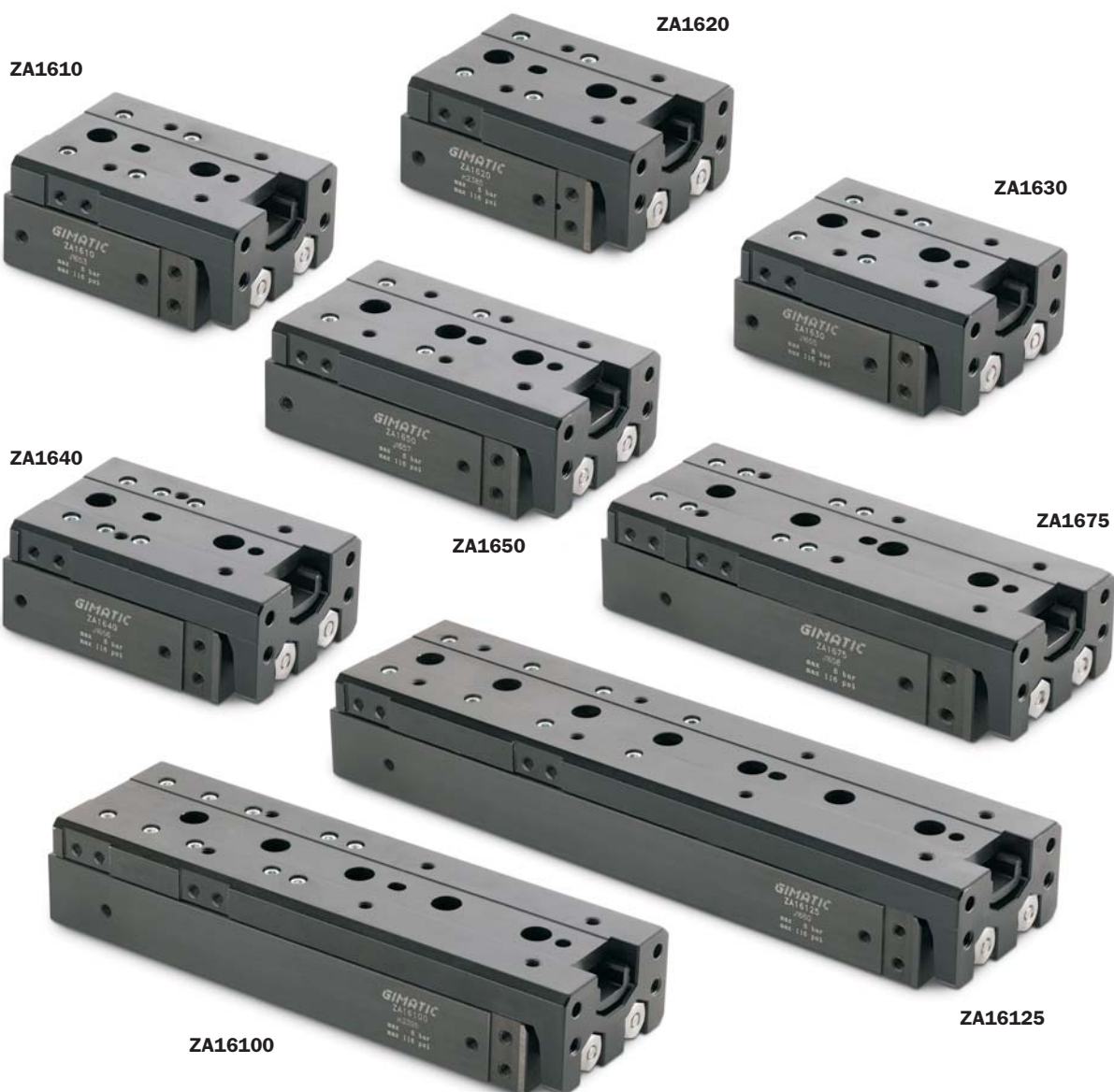


ATTUATORI LINEARI
LINEAR ACTUATORS

	ZA1210	ZA1220	ZA1230	ZA1240	ZA1250	ZA1275	ZA12100
Fluido Medium	Aria compressa filtrata, lubrificata / non lubrificata Filtered, lubricated / non lubricated compressed air						
Pressione di esercizio Pressure range	1 ÷ 8 bar						
Temperatura di esercizio Temperature range	5° ÷ 60°C.						
Forza di apertura a 6 bar Extension force at 6 bar	122 N						
Forza di chiusura a 6 bar Retraction force at 6 bar	101 N						
Corsa totale massima Maximum total stroke	10 mm	20 mm	30 mm	40 mm	50 mm	75 mm	100 mm
Tempo di azionamento minimo Minimum actuating time	0.02 s	0.04 s	0.06 s	0.09 s	0.11 s	0.14 s	0.19 s
Consumo d'aria per ciclo Cycle air consumption	9 cm ³	11 cm ³	13 cm ³	17 cm ³	23 cm ³	38 cm ³	55 cm ³
Peso Weight	390 g	390 g	395 g	440 g	535 g	715 g	955 g



	ZA1610	ZA1620	ZA1630	ZA1640	ZA1650	ZA1675	ZA16100	ZA16125
Fluido Medium	Aria compressa filtrata, lubrificata / non lubrificata Filtered, lubricated / non lubricated compressed air							
Pressione di esercizio Pressure range	1 ÷ 8 bar							
Temperatura di esercizio Temperature range	5° ÷ 60°C.							
Forza di apertura a 6 bar Extension force at 6 bar	217 N							
Forza di chiusura a 6 bar Retraction force at 6 bar	196 N							
Corsa totale massima Maximum total stroke	10 mm	20 mm	30 mm	40 mm	50 mm	75 mm	100 mm	125 mm
Tempo di azionamento minimo Minimum actuating time	0.03 s	0.04 s	0.05 s	0.06 s	0.06 s	0.07 s	0.09 s	0.11 s
Consumo d'aria per ciclo Cycle air consumption	16 cm ³	19 cm ³	23 cm ³	31 cm ³	40 cm ³	69 cm ³	98 cm ³	127 cm ³
Peso Weight	645 g	645 g	650 g	710 g	820 g	1150 g	1475 g	1800 g



ATTUATORI LINEARI
LINEAR ACTUATORS

	ZA2010	ZA2020	ZA2030	ZA2040	ZA2050	ZA2075	ZA20100	ZA20125	ZA20150
Fluido Medium	Aria compressa filtrata, lubrificata / non lubrificata Filtered, lubricated / non lubricated compressed air								
Pressione di esercizio Pressure range	1 ÷ 8 bar								
Temperatura di esercizio Temperature range	5° ÷ 60°C.								
Forza di apertura a 6 bar Extension force at 6 bar	339 N								
Forza di chiusura a 6 bar Retraction force at 6 bar	309 N								
Corsa totale massima Maximum total stroke	10 mm	20 mm	30 mm	40 mm	50 mm	75 mm	100 mm	125 mm	150 mm
Tempo di azionamento minimo Minimum actuating time	0.03 s	0.04 s	0.05 s	0.06 s	0.07 s	0.09 s	0.11 s	0.13 s	0.16 s
Consumo d'aria per ciclo Cycle air consumption	26 cm ³	32 cm ³	38 cm ³	51 cm ³	66 cm ³	103 cm ³	142 cm ³	188 cm ³	221 cm ³
Peso Weight	1100 g	1110 g	1110 g	1210 g	1360 g	1745 g	2320 g	2845 g	3370 g



Energia cinetica

L'energia che la slitta deve dissipare ad ogni fine corsa è:

Kinetic energy

The energy the slide has to dissipate at each end stroke is:

$$E = \frac{m_{WP} \times s^2}{t^2}$$

dove:

m_{WP} è la massa trasportata [kg];
 s è la corsa [m];
 t è il tempo di traslazione [s].

where:

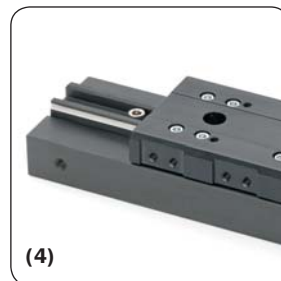
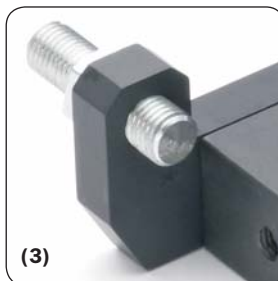
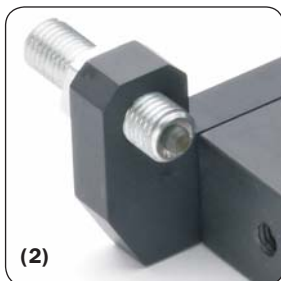
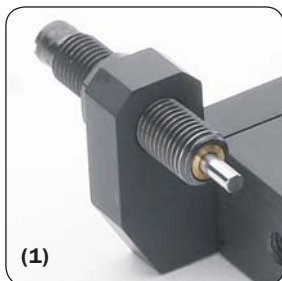
m_{WP} is the work piece mass [kg];
 s is the travel stroke [m];
 t is the travel time [s].

I valori ammessi di E sono riportati nella tabella dell'energia cinetica sottostante.

The maximum permitted values of E are in the kinetic energy table below.

Energia cinetica ammessa / Permitted kinetic energy

		ZA06	ZA08	ZA12	ZA16	ZA20
Con deceleratore With shock-absorber	(1)	0.03 J	0.04 J	0.14 J	0.28 J	0.48 J
Con gommino With rubber bumper	(2)	0.02 J	0.03 J	0.08 J	0.14 J	0.24 J
Con Grano With grub screw	(3)	0.01 J	0.02 J	0.03 J	0.05 J	0.08 J
Senza regolatori di corsa Without stroke adjusters	(4)	0.01 J	0.02 J	0.03 J	0.05 J	0.08 J



Ripetibilità

Gli accessori usati per la regolazione del fine corsa influenzano la ripetibilità.

Usare il deceleratore o il grano, quando è necessario un posizionamento preciso (+/-0.02mm) a fine corsa.

Repeatability

The accessories used for the end-stroke adjustment affect the slide repeatability.

Use the shock-absorber option or the grub screw option, when a precise end-stroke positioning (+/-0.02mm) is needed.

Carichi di sicurezza

Consultare le tabelle dei carichi ammissibili.
Carichi eccessivi possono danneggiare la slitta e comprometterne il funzionamento.

Le quote Y_o e Z_o identificano il centro del cuscinetto lineare.

$F_x s$, $F_z s$, $M_x s$, $M_y s$, $M_z s$ sono i carichi statici massimi ammissibili.

$F_x d$, $F_z d$, $M_x d$, $M_y d$, $M_z d$ sono i carichi dinamici massimi ammissibili.

I carichi statici sono quelli applicabili alla slitta quando il carrello é fermo, i carichi dinamici sono quelli applicabili durante il movimento.

Nelle tabelle è riportato anche il massimo peso trasportabile (m_{max}).

Safety loads

Check the tables below.

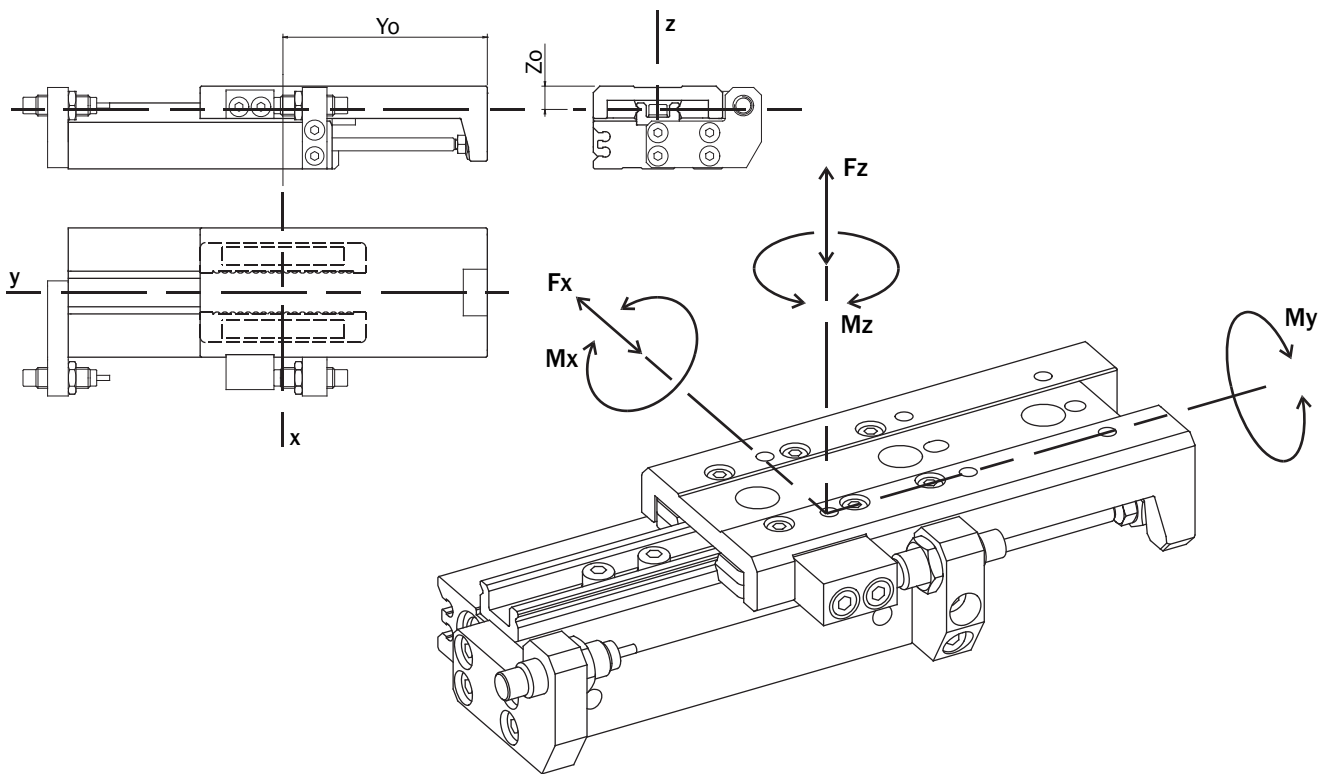
Excessive loads can damage the slide and cause functioning troubles.

The dimensions Y_o and Z_o identify the linear bearing center position.

$F_x s$, $F_z s$, $M_x s$, $M_y s$, $M_z s$ are maximum permitted static loads.
 $F_x d$, $F_z d$, $M_x d$, $M_y d$, $M_z d$ are maximum permitted dynamic loads.

The static loads can be applied when the carrier is motionless, the dynamic loads when the carrier is running.

In the tables you can also find the maximum payload (m_{max}).



ATTUATORI LINEARI
LINEAR ACTUATORS

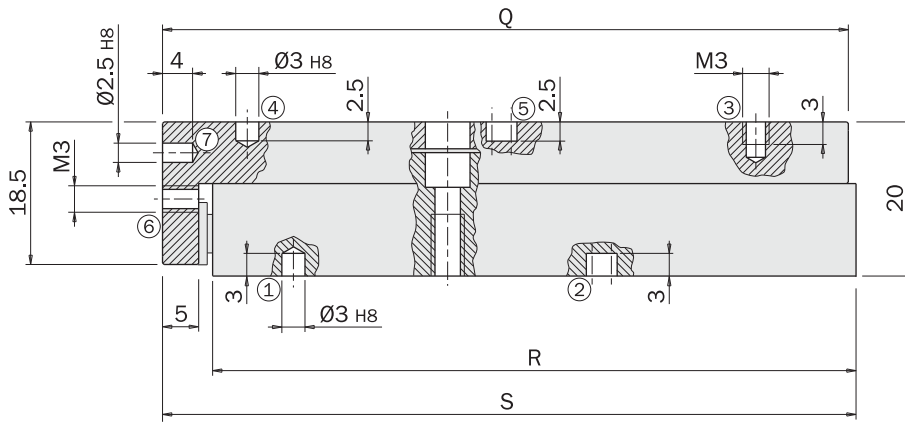
	ZA0610	ZA0620	ZA0630	ZA0640	ZA0650
Z_o	5.5 mm	5.5 mm	5.5 mm	5.5 mm	5.5 mm
Y_o	28 mm	38 mm	48 mm	65 mm	77 mm
$F_x s$	15 N	15 N	15 N	18 N	18 N
$F_z s$	15 N	15 N	15 N	18 N	18 N
$M_x s$	1 Nm	1 Nm	1 Nm	2 Nm	2 Nm
$M_y s$	1 Nm	1 Nm	1 Nm	1.5 Nm	1.5 Nm
$M_z s$	1 Nm	1 Nm	1 Nm	2 Nm	2 Nm
$F_x d$	6 N	6 N	6 N	7 N	7 N
$F_z d$	6 N	6 N	6 N	7 N	7 N
$M_x d$	0.2 Nm	0.2 Nm	0.2 Nm	0.4 Nm	0.4 Nm
$M_y d$	0.2 Nm	0.2 Nm	0.2 Nm	0.3 Nm	0.3 Nm
$M_z d$	0.2 Nm	0.2 Nm	0.2 Nm	0.4 Nm	0.4 Nm
m_{max}	0.6 kg	0.6 kg	0.6 kg	0.7 kg	0.7 kg

	ZA0810	ZA0820	ZA0830	ZA0840	ZA0850	ZA0875
Zo	7.5 mm	7.5 mm	7.5 mm	7.5 mm	7.5 mm	7.5 mm
Yo	36 mm	41 mm	52 mm	66 mm	77 mm	115 mm
Fx s	30 N	30 N	30 N	30 N	30 N	60 N
Fz s	30 N	30 N	30 N	30 N	30 N	60 N
Mx s	1.5 Nm	1.5 Nm	1.5 Nm	2 Nm	4 Nm	6 Nm
My s	2 Nm	2 Nm	2 Nm	3 Nm	2 Nm	4 Nm
Mz s	1.5 Nm	1.5 Nm	1.5 Nm	2 Nm	4 Nm	6 Nm
Fx d	10 N	10 N	10 N	10 N	10 N	20 N
Fz d	10 N	10 N	10 N	10 N	10 N	20 N
Mx d	0.3 Nm	0.3 Nm	0.3 Nm	0.4 Nm	0.8 Nm	1.2 Nm
My d	0.4 Nm	0.4 Nm	0.4 Nm	0.6 Nm	0.4 Nm	0.8 Nm
Mz d	0.3 Nm	0.3 Nm	0.3 Nm	0.4 Nm	0.8 Nm	1.2 Nm
m max	1 kg	1 kg	1 kg	1 kg	1 kg	2 kg

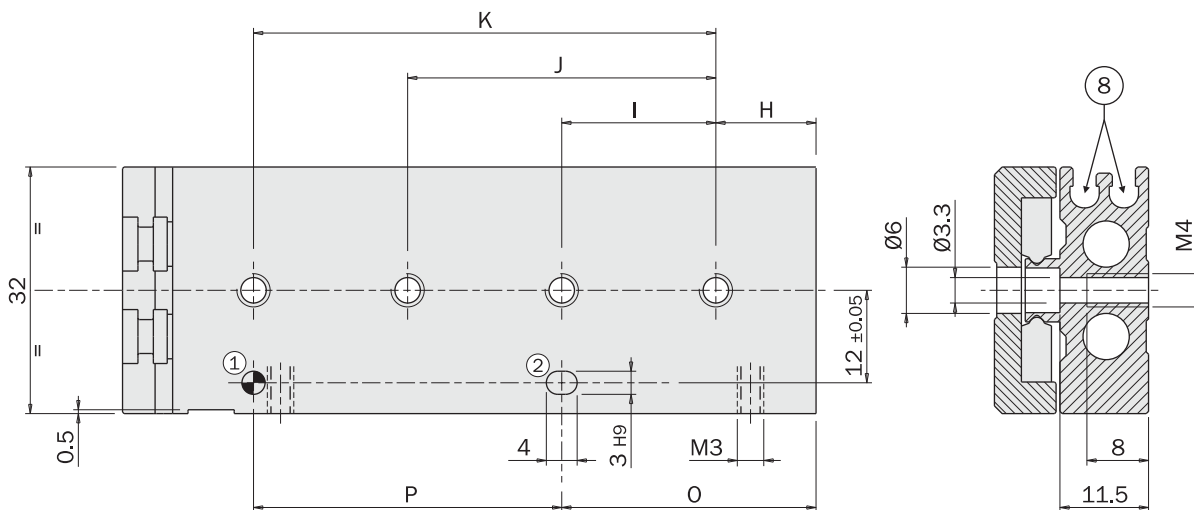
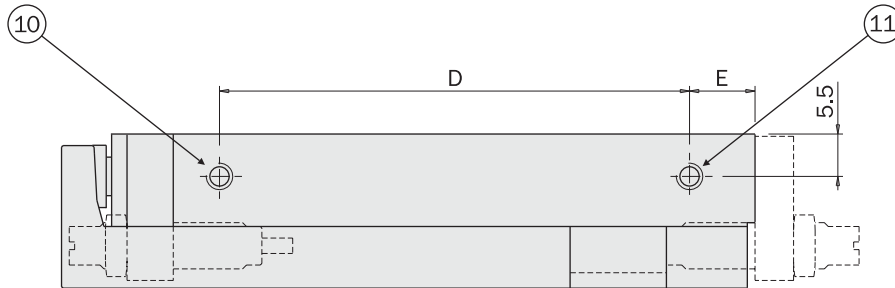
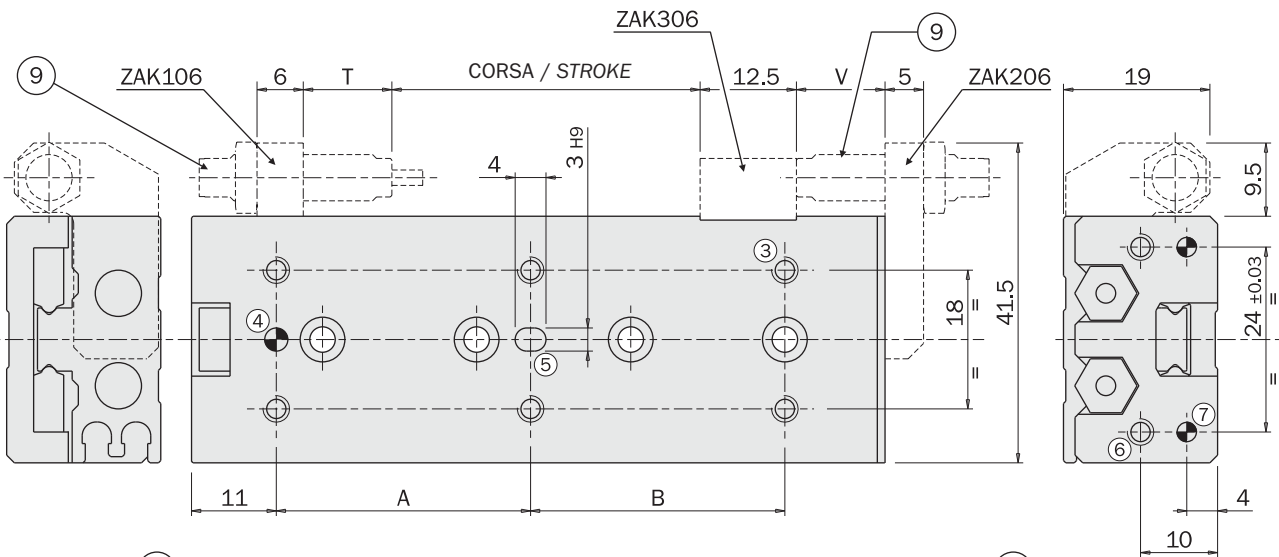
	ZA1210	ZA1220	ZA1230	ZA1240	ZA1250	ZA1275	ZA12100
Zo	9 mm	9 mm	9 mm	9 mm	9 mm	9 mm	9 mm
Yo	53 mm	53 mm	53 mm	65 mm	83 mm	115 mm	154 mm
Fx s	60 N	60 N	60 N	60 N	90 N	90 N	120 N
Fz s	60 N	60 N	60 N	60 N	90 N	90 N	120 N
Mx s	4 Nm	4 Nm	4 Nm	4 Nm	7 Nm	10 Nm	15 Nm
My s	6 Nm	6 Nm	6 Nm	6 Nm	8 Nm	8 Nm	10 Nm
Mz s	4 Nm	4 Nm	4 Nm	4 Nm	7 Nm	10 Nm	15 Nm
Fx d	20 N	20 N	20 N	20 N	30 N	30 N	40 N
Fz d	20 N	20 N	20 N	20 N	30 N	30 N	40 N
Mx d	0.8 Nm	0.8 Nm	0.8 Nm	0.8 Nm	1.4 Nm	2 Nm	3 Nm
My d	1.2 Nm	1.2 Nm	1.2 Nm	1.2 Nm	1.6 Nm	1.6 Nm	2 Nm
Mz d	0.8 Nm	0.8 Nm	0.8 Nm	0.8 Nm	1.4 Nm	2 Nm	3 Nm
m max	2 kg	2 kg	2 kg	2 kg	3 kg	3 kg	4 kg

	ZA1610	ZA1620	ZA1630	ZA1640	ZA1650	ZA1675	ZA16100	ZA16125
Zo	10 mm	10 mm	10 mm	10 mm	10 mm	10 mm	10 mm	10 mm
Yo	60 mm	60 mm	60 mm	68 mm	79 mm	118 mm	155 mm	192 mm
Fx s	100 N	100 N	100 N	100 N	120 N	120 N	180 N	250 N
Fz s	100 N	100 N	100 N	100 N	120 N	120 N	180 N	250 N
Mx s	6 Nm	6 Nm	6 Nm	6 Nm	7 Nm	15 Nm	25 Nm	46 Nm
My s	8 Nm	8 Nm	8 Nm	8 Nm	11 Nm	10 Nm	16 Nm	22 Nm
Mz s	6 Nm	6 Nm	6 Nm	6 Nm	7 Nm	15 Nm	25 Nm	46 Nm
Fx d	30 N	30 N	30 N	30 N	40 N	40 N	50 N	60 N
Fz d	30 N	30 N	30 N	30 N	40 N	40 N	50 N	60 N
Mx d	1.2 Nm	1.2 Nm	1.2 Nm	1.2 Nm	1.4 Nm	3 Nm	5 Nm	9.2 Nm
My d	1.6 Nm	1.6 Nm	1.6 Nm	1.6 Nm	2.2 Nm	2 Nm	3.2 Nm	4.4 Nm
Mz d	1.2 Nm	1.2 Nm	1.2 Nm	1.2 Nm	1.4 Nm	3 Nm	5 Nm	9.2 Nm
m max	3 kg	3 kg	3 kg	3 kg	4 kg	4 kg	5 kg	6 kg

	ZA2010	ZA2020	ZA2030	ZA2040	ZA2050	ZA2075	ZA20100	ZA20125	ZA20150
Zo	13.5 mm	13.5 mm	13.5 mm	13.5 mm	13.5 mm	13.5 mm	13.5 mm	13.5 mm	13.5 mm
Yo	64 mm	64 mm	64 mm	74 mm	84 mm	117 mm	157 mm	194 mm	235 mm
Fx s	180 N	180 N	180 N	180 N	180 N	180 N	270 N	370 N	260 N
Fz s	180 N	180 N	180 N	180 N	180 N	180 N	270 N	370 N	260 N
Mx s	10 Nm	10 Nm	10 Nm	10 Nm	10 Nm	13 Nm	30 Nm	48 Nm	48 Nm
My s	17 Nm	17 Nm	17 Nm	17 Nm	17 Nm	17 Nm	25 Nm	35 Nm	25 Nm
Mz s	10 Nm	10 Nm	10 Nm	10 Nm	10 Nm	13 Nm	30 Nm	48 Nm	48 Nm
Fx d	40 N	40 N	40 N	40 N	40 N	40 N	60 N	70 N	50 N
Fz d	40 N	40 N	40 N	40 N	40 N	40 N	60 N	70 N	50 N
Mx d	2 Nm	2 Nm	2 Nm	2 Nm	2 Nm	2.6 Nm	6 Nm	9.6 Nm	9.6 Nm
My d	3.4 Nm	3.4 Nm	3.4 Nm	3.4 Nm	3.4 Nm	3.4 Nm	5 Nm	7 Nm	5 Nm
Mz d	2 Nm	2 Nm	2 Nm	2 Nm	2 Nm	2.6 Nm	6 Nm	9.6 Nm	9.6 Nm
m max	4 kg	4 kg	4 kg	4 kg	4 kg	4 kg	6 kg	7 kg	5 kg

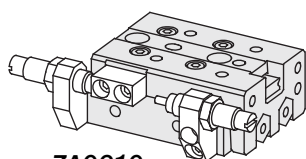


- 8 Sede per sensori serie SS e SN
SS and SN series sensor groove
- 9 Regolatore di corsa
Stroke adjuster
- 10 Ingresso aria per chiusura slitta
Air port for slide retraction
- 11 Ingresso aria per apertura slitta
Air port for slide extension

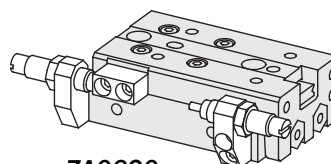


Dimensioni (mm) / Dimensions (mm)

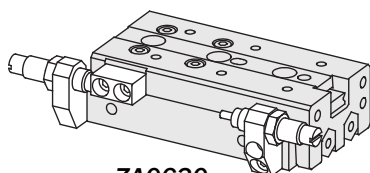
	ZA0610	ZA0620	ZA0630	ZA0640	ZA0650
A	20	30	20	28	38
B	-	-	20	28	38
D	19	29	40	61	76
E	8.5	8.5	7.5	8.5	9.5
H	6	6	11	13	17
I	25	35	20	30	24
J	-	-	40	60	48
K	-	-	-	-	72
O	11	21	31	43	41
P	20	20	20	30	48
Q	47	57	67	89	105
R	41.5	51.5	61.5	83.5	99.5
S	48	58	68	90	106
T	5.5	5.5	5.5	11.5	14.5
V	5.5	5.5	5.5	11.5	14.5



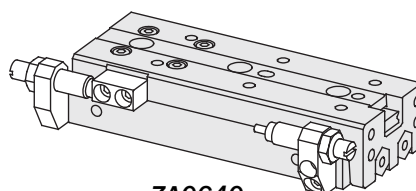
ZA0610



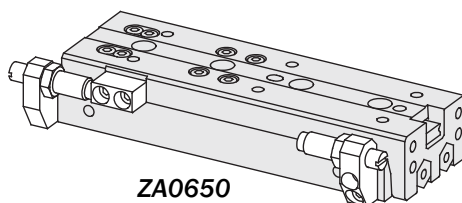
ZA0620



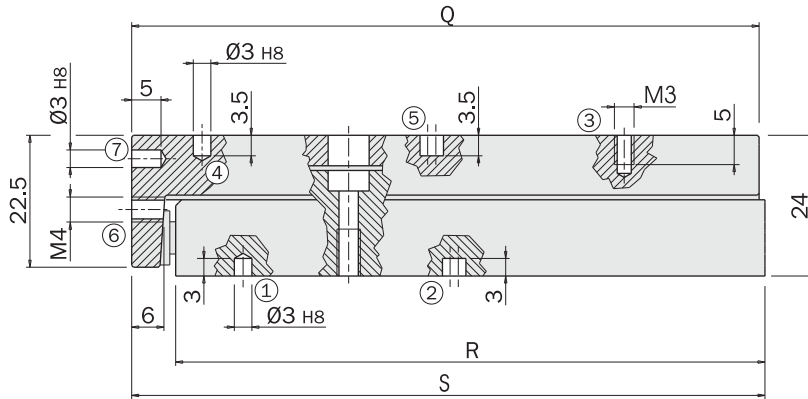
ZA0630



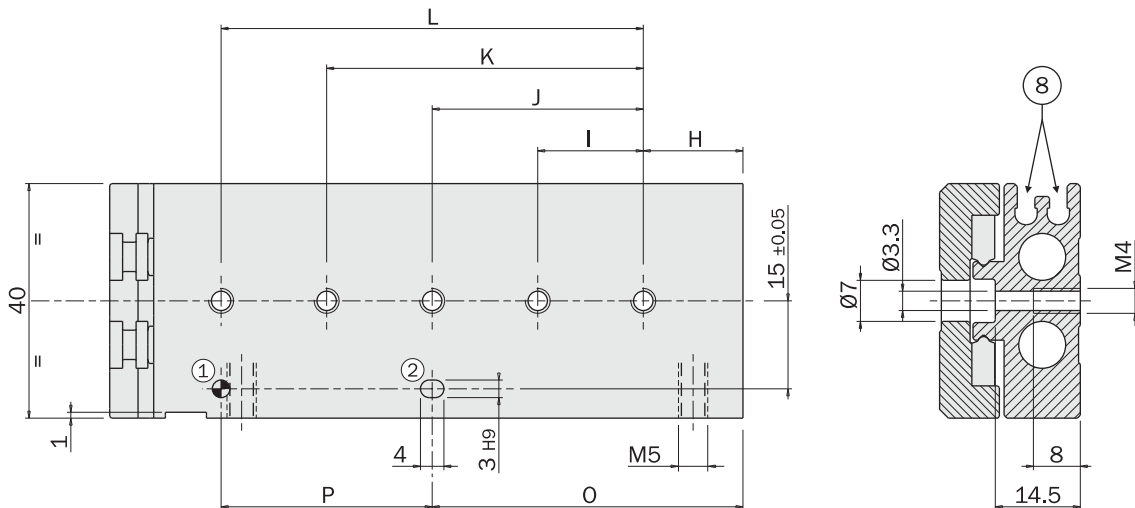
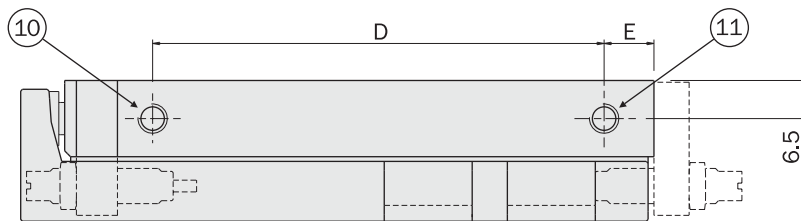
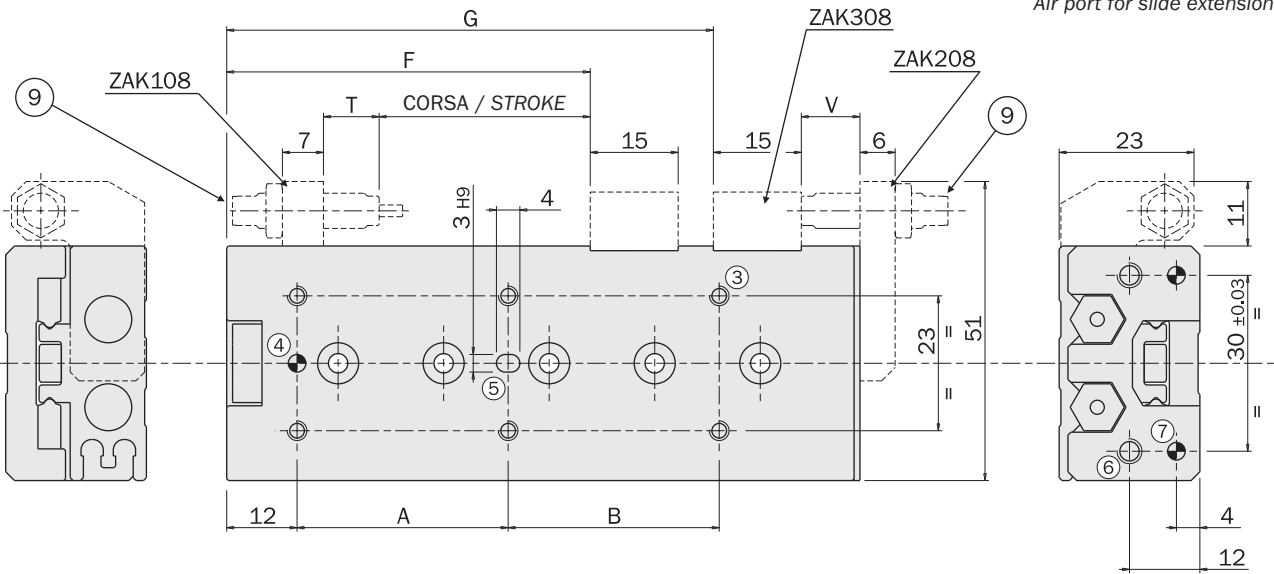
ZA0640



ZA0650

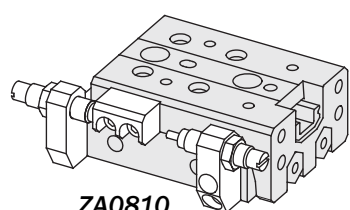


- 8 Sede per sensori serie SS e SN
SS and SN series sensor groove
- 9 Regolatore di corsa
Stroke adjuster
- 10 Ingresso aria per chiusura slitta
Air port for slide retraction
- 11 Ingresso aria per apertura slitta
Air port for slide extension

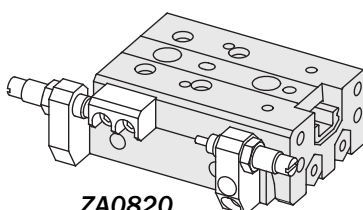


Dimensioni (mm) / Dimensions (mm)

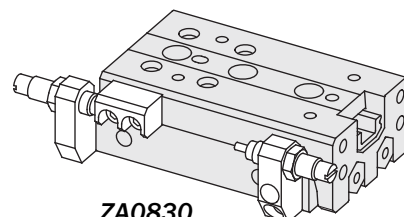
	ZA0810	ZA0820	ZA0830	ZA0840	ZA0850	ZA0875
A	25	25	40	50	38	50
B	-	-	-	-	38	50
D	21	30	41	59	77	127
E	12.5	8.5	8.5	8.5	8.5	8.5
F	34	41	52	66	71	98
G	-	-	-	-	89	137
H	9	12	13	15	20	27
I	28	30	20	28	23	28
J	-	-	40	56	46	56
K	-	-	-	-	69	84
L	-	-	-	-	-	112
O	17	12	33	43	43	83
P	20	30	20	28	46	56
Q	55	60	71	89	107	157
R	48.5	53.5	64.5	82.5	100.5	150.5
S	56	61	72	90	108	158
T	7.5	4.5	5.5	9.5	4.5	6.5
V	7	5	5	9	4	6



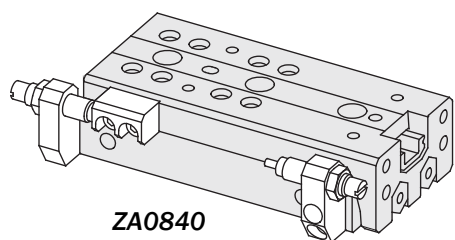
ZA0810



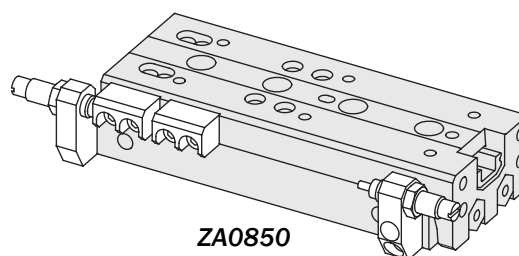
ZA0820



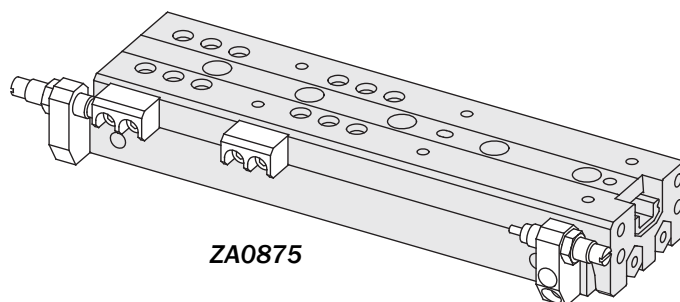
ZA0830



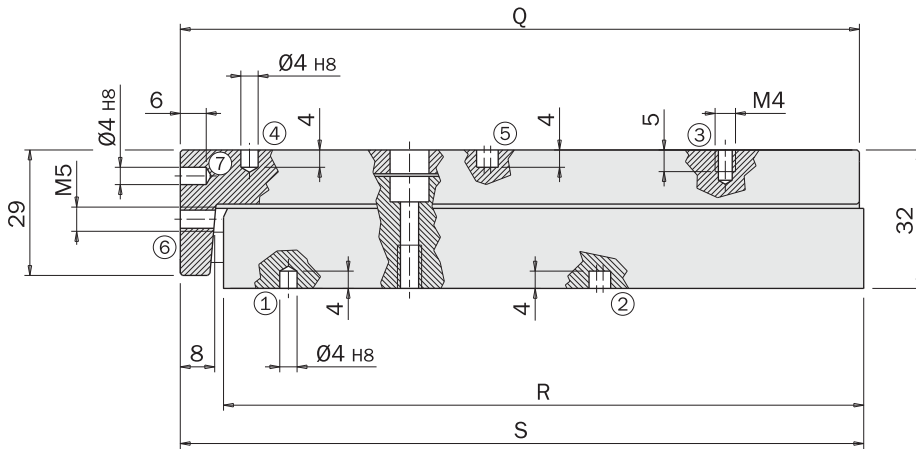
ZA0840



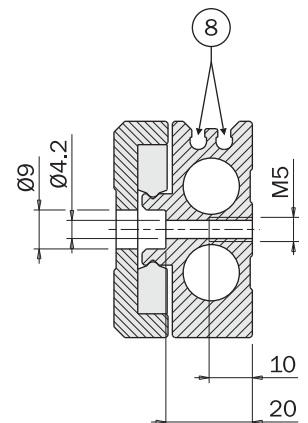
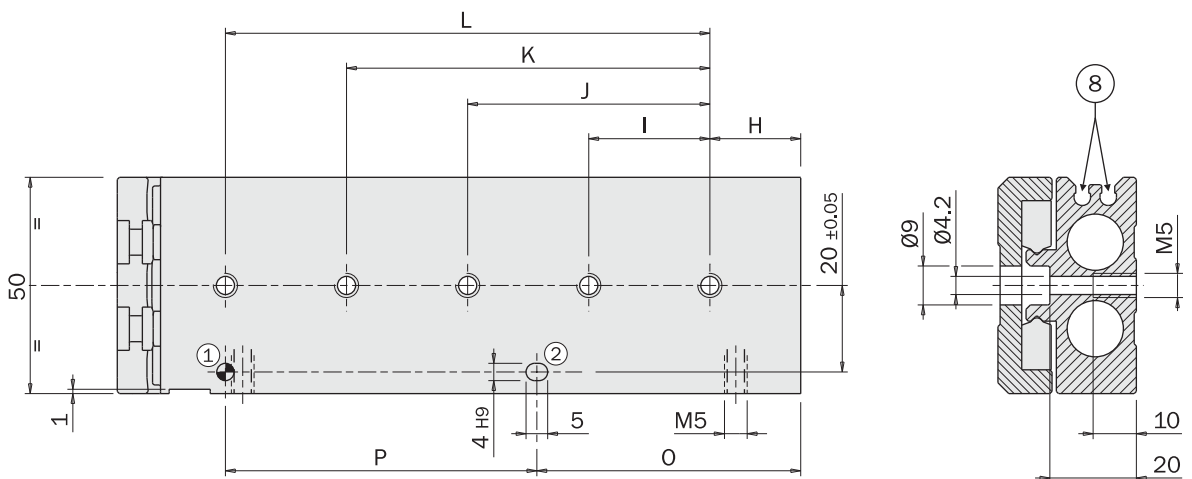
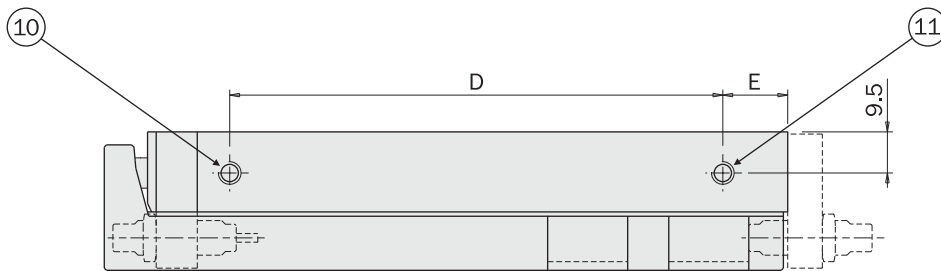
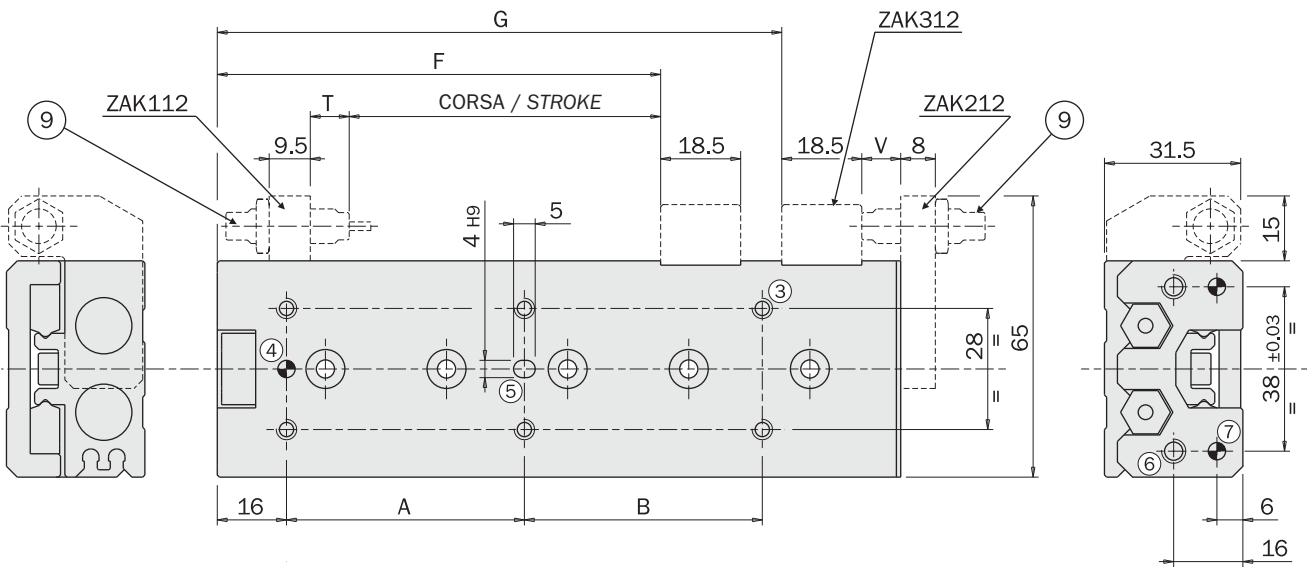
ZA0850



ZA0875

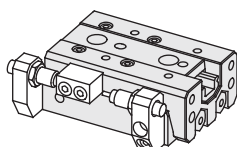


- 8** Sede per sensori serie SS e SN
SS and SN series sensor groove
- 9** Regolatore di corsa
Stroke adjuster
- 10** Ingresso aria per chiusura slitta
Air port for slide retraction
- 11** Ingresso aria per apertura slitta
Air port for slide extension

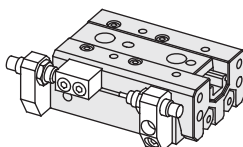


Dimensioni (mm) / Dimensions (mm)

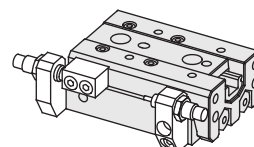
	ZA1210	ZA1220	ZA1230	ZA1240	ZA1250	ZA1275	ZA12100
A	35	35	35	50	35	55	65
B	-	-	-	-	35	55	65
D	41.5	41.5	41.5	53	73	114	168
E	9.5	9.5	9.5	10	10	15	15
F	46.5	51.5	56.5	67.5	82.5	102.5	130
G	-	-	-	-	-	133.5	185
H	15	15	15	17	15	25	35
I	40	40	40	25	36	36	38
J	-	-	-	50	72	72	76
K	-	-	-	-	-	108	114
L	-	-	-	-	-	-	152
O	15	15	15	42	51	61	111
P	40	40	40	25	36	72	76
Q	79	79	79	91	111	157	211
R	70	70	70	82	102	148	202
S	80	80	80	92	112	158	212
T	15	10	5	6	11	6	8.5
V	15	9.5	5	6	11	6	8.5



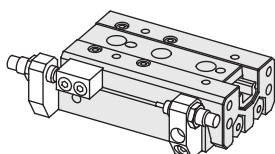
ZA1210



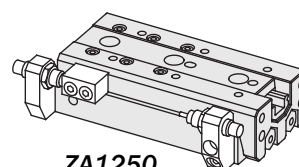
ZA1220



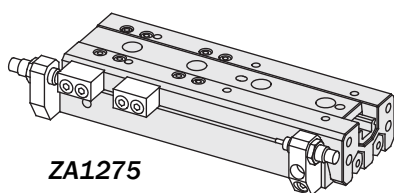
ZA1230



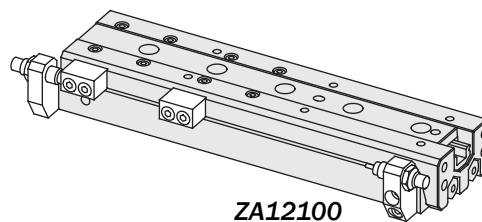
ZA1240



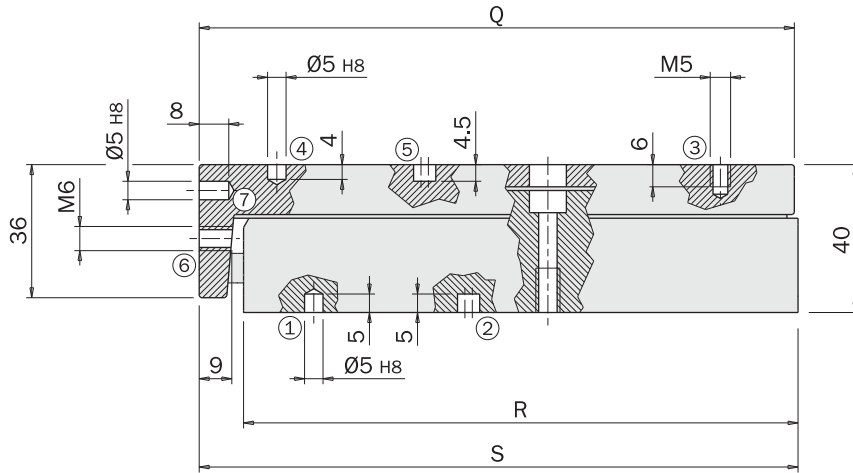
ZA1250



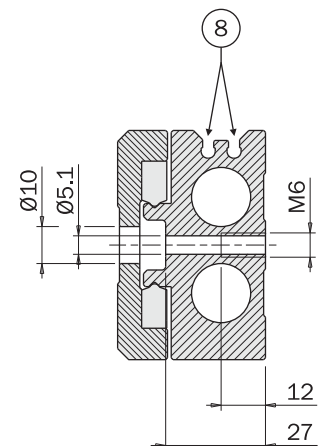
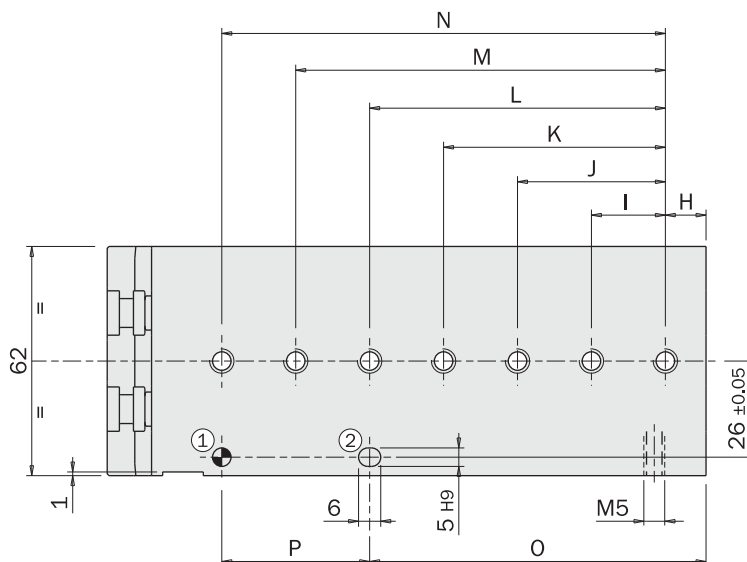
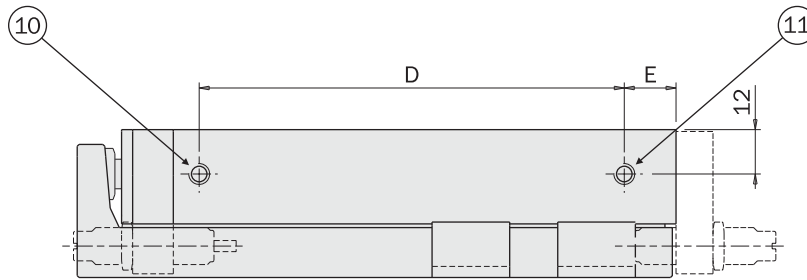
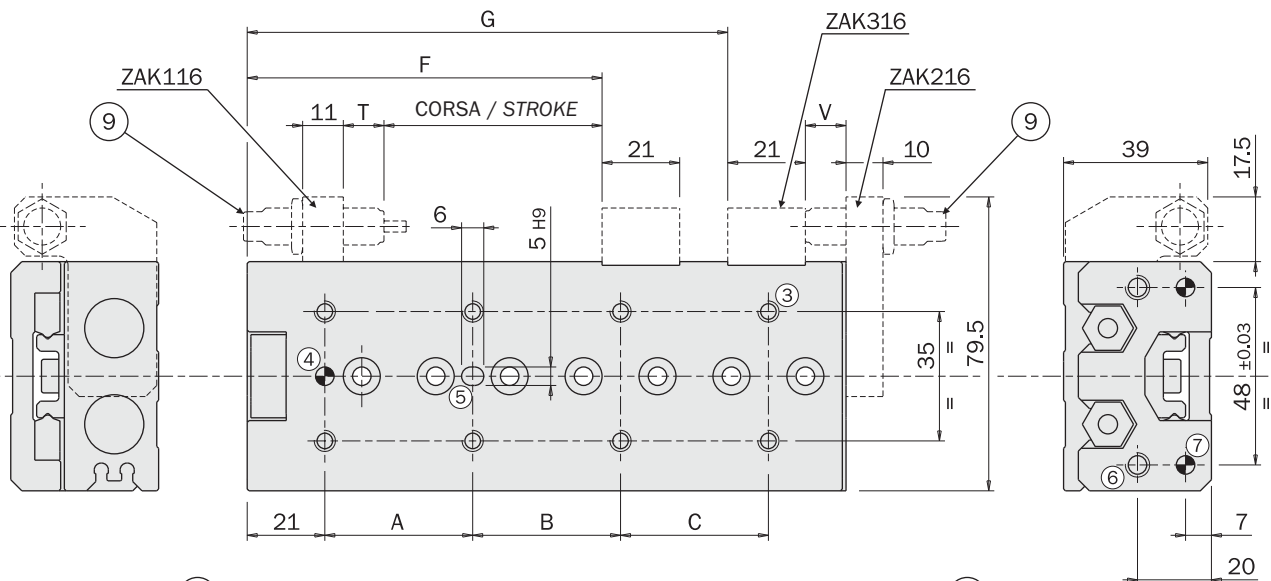
ZA1275



ZA12100

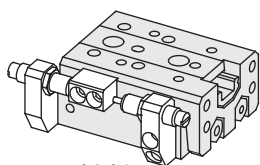


- 8 Sede per sensori serie SS e SN
SS and SN series sensor groove
- 9 Regolatore di corsa
Stroke adjuster
- 10 Ingresso aria per chiusura slitta
Air port for slide retraction
- 11 Ingresso aria per apertura slitta
Air port for slide extension

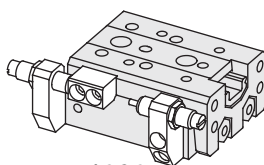


Dimensioni (mm) / Dimensions (mm)

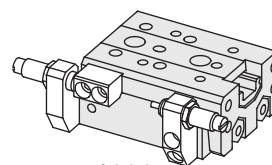
	ZA1610	ZA1620	ZA1630	ZA1640	ZA1650	ZA1675	ZA16100	ZA16125
A	35	35	35	40	30	55	65	70
B	-	-	-	-	30	55	65	70
C	-	-	-	-	-	-	-	70
D	46.5	46.5	46.5	56.5	70	115	150	200
E	7.5	7.5	7.5	7.5	9	14	27	27
F	51	56	61	71	83.5	106	132	157
G	-	-	-	-	-	136	183	233
H	16	16	16	16	21	26	39	19
I	40	40	40	50	30	35	35	35
J	-	-	-	-	60	70	70	70
K	-	-	-	-	-	105	105	105
L	-	-	-	-	-	-	140	140
M	-	-	-	-	-	-	-	175
N	-	-	-	-	-	-	-	210
O	16	16	16	16	51	61	109	159
P	40	40	40	50	30	70	70	70
Q	86	86	86	96	111	161	209	259
R	75	75	75	85	100	150	198	248
S	87	87	87	97	112	162	210	260
T	15	10	5	5	7.5	5	6	6
V	15	10	5	5	7.5	5	6	6



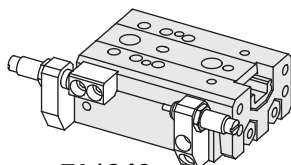
ZA1610



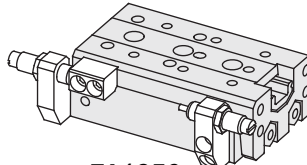
ZA1620



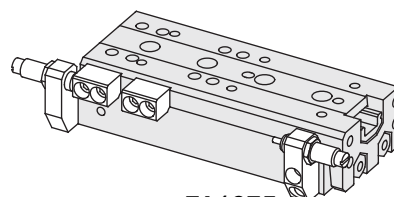
ZA1630



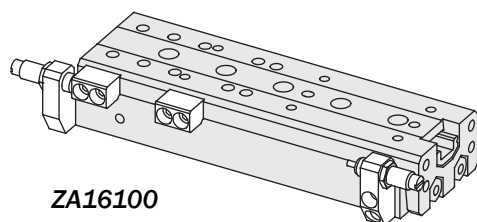
ZA1640



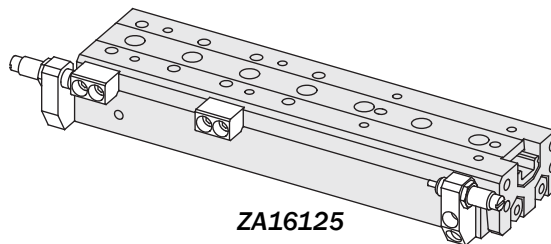
ZA1650



ZA1675

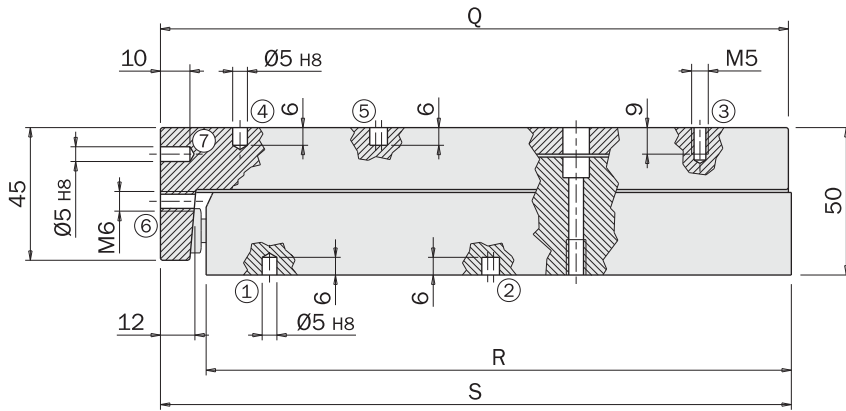


ZA16100

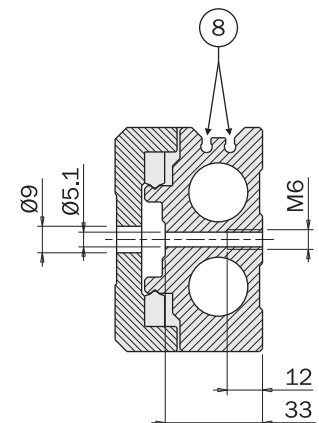
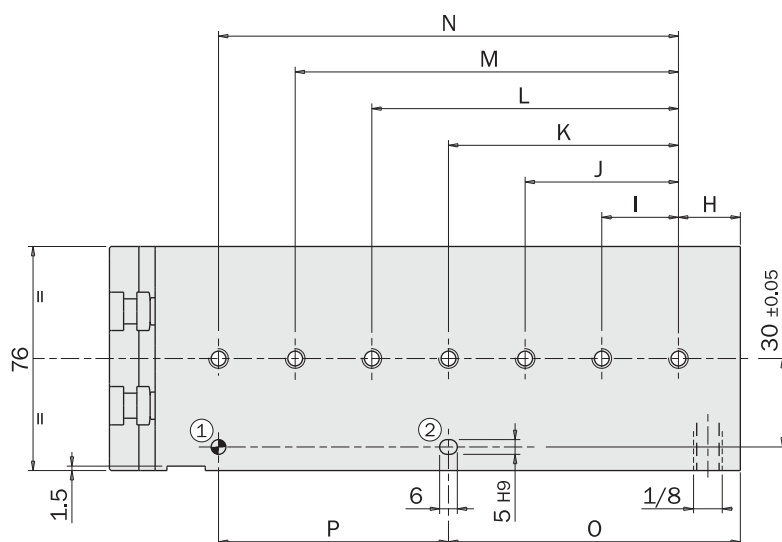
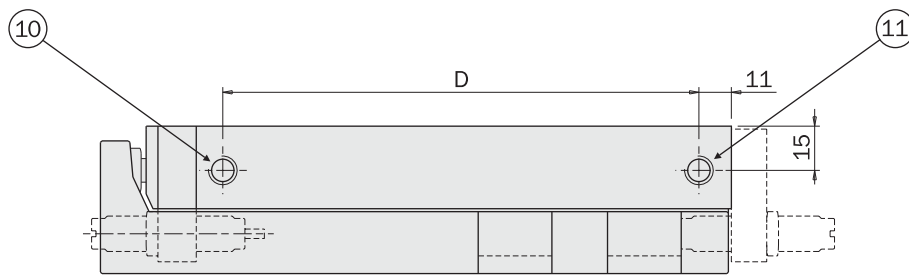
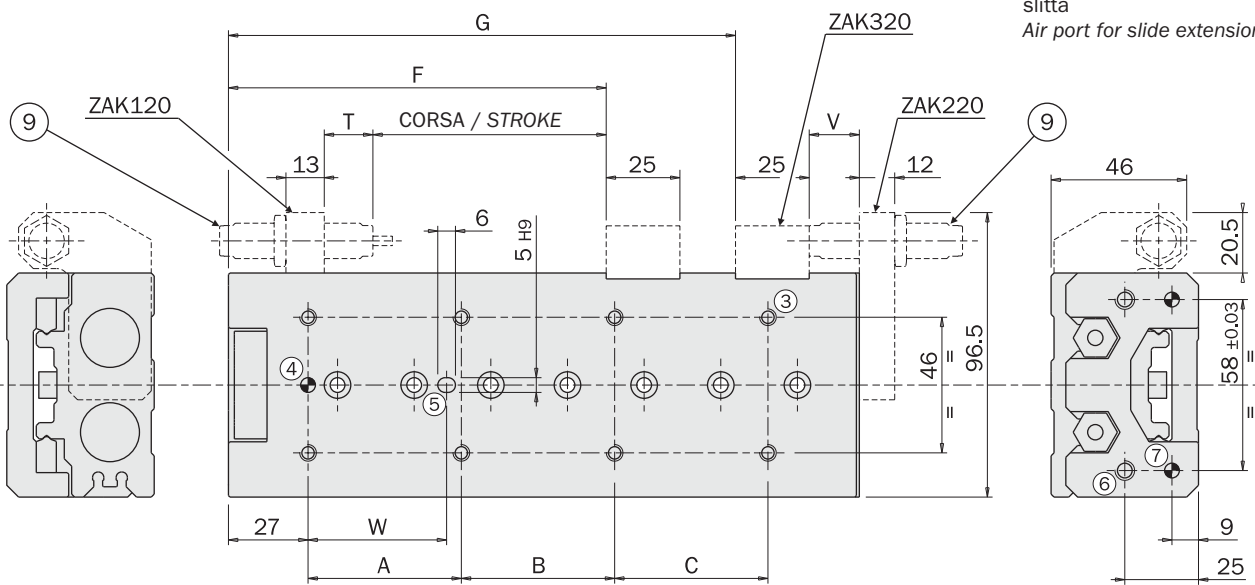


ZA16125

ATTUATORI LINEARI
LINEAR ACTUATORS

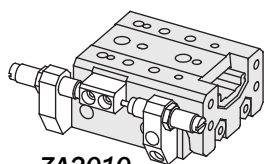


- 8 Sede per sensori serie SS e SN
SS and SN series sensor groove
- 9 Regolatore di corsa
Stroke adjuster
- 10 Ingresso aria per chiusura slitta
Air port for slide retraction
- 11 Ingresso aria per apertura slitta
Air port for slide extension

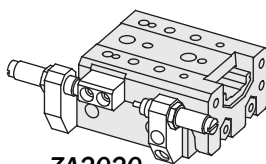


Dimensioni (mm) / Dimensions (mm)

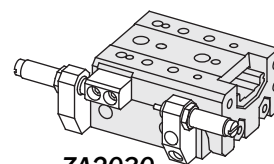
	ZA2010	ZA2020	ZA2030	ZA2040	ZA2050	ZA2075	ZA20100	ZA20125	ZA20150
A	50	50	50	60	35	60	70	70	80
B	-	-	-	-	35	60	70	70	80
C	-	-	-	-	-	-	-	70	80
D	44.5	44.5	44.5	54.5	69.5	108.5	161.5	215	267.5
F	57	62	67	77	89.5	121.5	140	165	190
G	-	-	-	-	-	-	181	235	287
H	15	15	15	15	15	19	37	41	19
I	45	45	45	55	35	35	35	38	44
J	-	-	-	-	70	70	70	76	88
K	-	-	-	-	-	105	105	114	132
L	-	-	-	-	-	-	140	152	176
M	-	-	-	-	-	-	-	190	220
N	-	-	-	-	-	-	-	-	264
O	25	25	25	35	50	54	107	155	195
P	35	35	35	35	35	70	70	76	88
Q	96	96	96	106	121	160	213	267	319
R	81.5	81.5	81.5	91.5	106.5	145.5	198.5	252.5	304.5
S	97	97	97	107	122	161	214	268	320
T	14.5	9.5	4.5	4.5	7	14	7.5	7.5	7.5
V	15	10	5	5	7.5	14.5	8	8	8
W	40	40	40	50	35	60	70	70	80



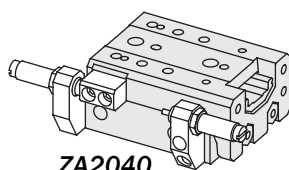
ZA2010



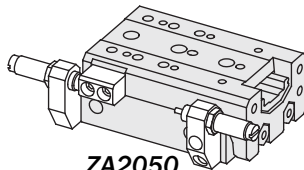
ZA2020



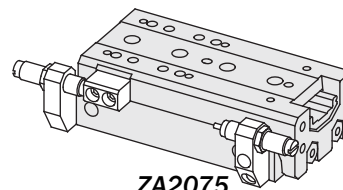
ZA2030



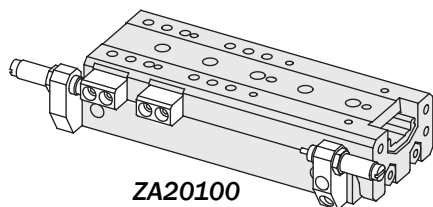
ZA2040



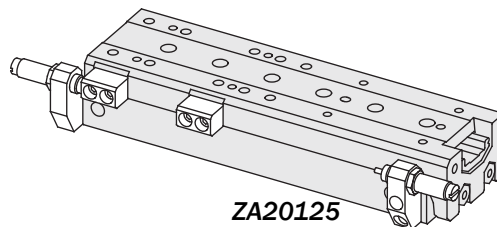
ZA2050



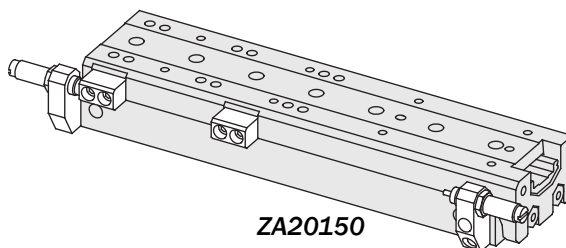
ZA2075



ZA20100



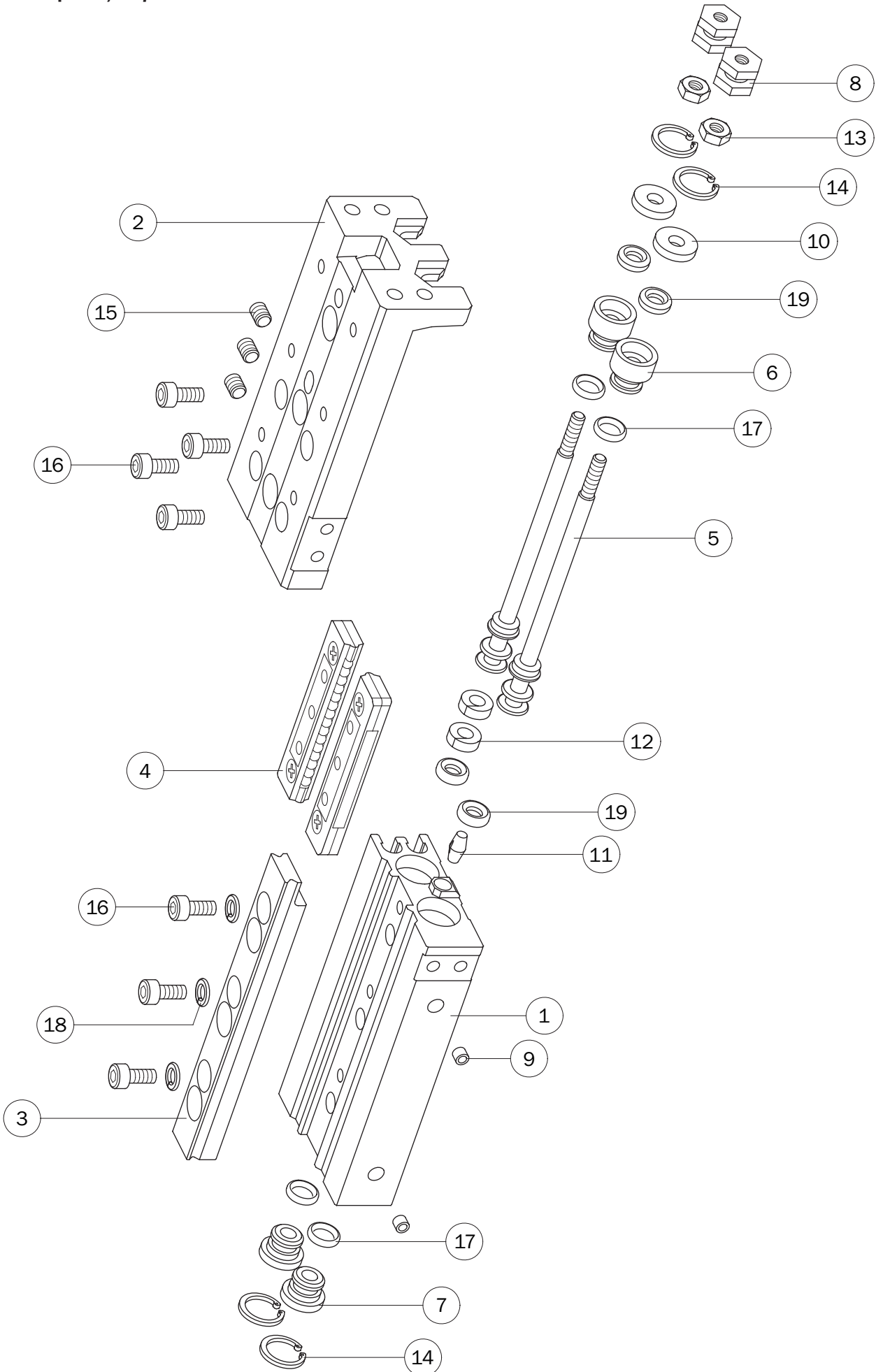
ZA20125



ZA20150

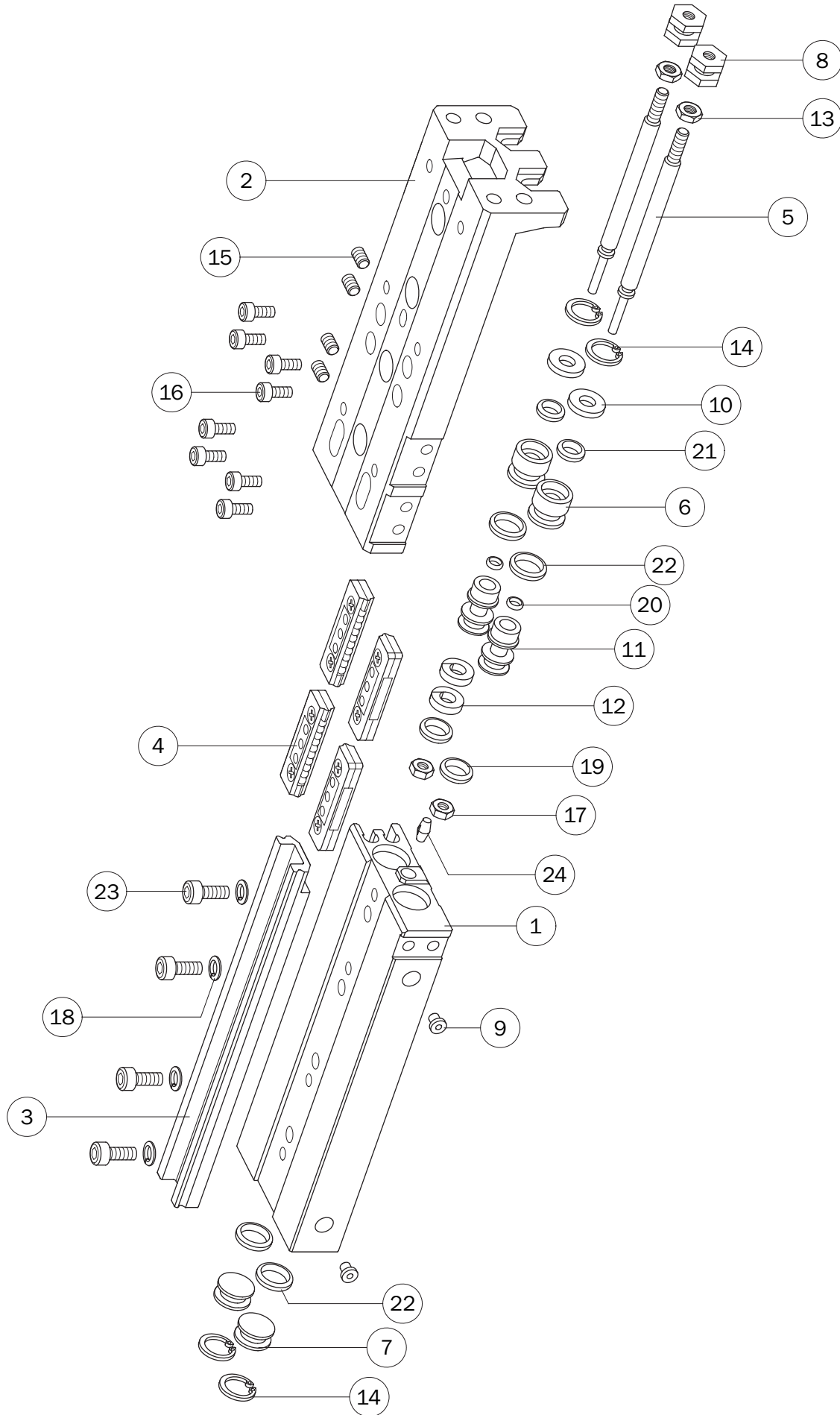
Vista esplosa / Exploded view

ZA06



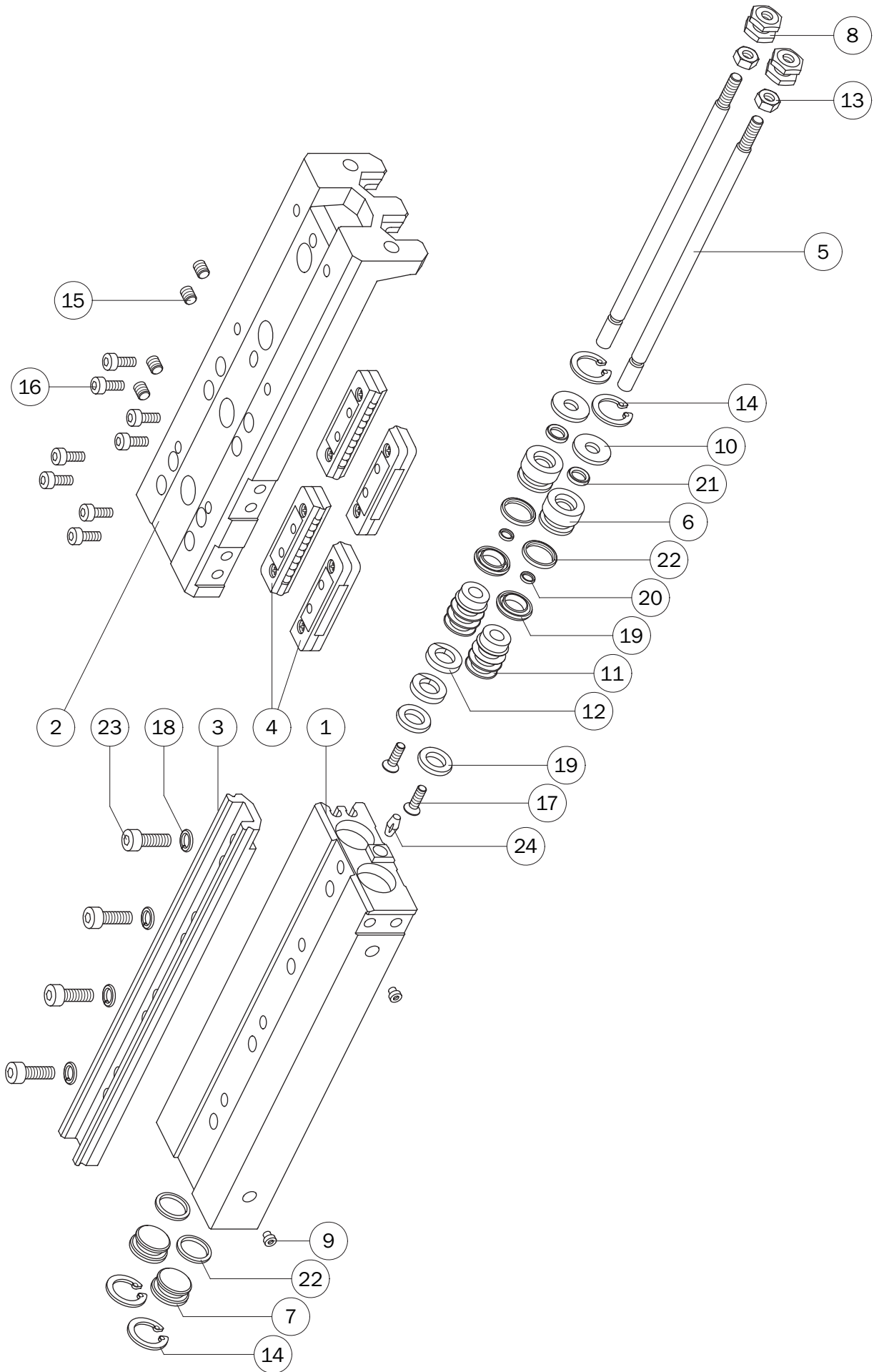
Elenco delle parti / Part list

		ZA0610	ZA0620	ZA0630	ZA0640	ZA0650		
1	Corpo slitta	ZA0610-01	ZA0620-01	ZA0630-01	ZA0640-01	ZA0650-01	Slide housing	1
2	Carrello	ZA0610-02	ZA0620-02	ZA0630-02	ZA0640-02	ZA0650-02	Carrier	2
3	Guida	ZA0610-03	ZA0620-03	ZA0630-05	ZA0640-03	ZA0650-03	Guideway	3
4	Cartuccia ricircolo di sfere		CZ236 (x2)		CZ244 (x2)	CZ226 (x4)	Ball bushing	4
5	Pistone Ø12	ZA0610-04	ZA0620-04	ZA0630-04	ZA0640-04	ZA0650-04	Piston	5
6	Flangia anteriore			ZE0630-03			Front flange	6
7	Flangia posteriore			ZE0630-04			Rear flange	7
8	Giunto			ZA0630-03			Bolt	8
9	Riduzione Ø1			PAR-10-15B			Air restrictor	9
10	Disco flangia anteriore			ZE0630-05			Front flange plate	10
11	Gommino			Ø3 AM-001			Rubber bumper	11
12	Magnete			ZE0630-11			Magnet	12
13	Dado			M2.5 DIN 934 INOX			Nut	13
14	Anello elastico			Ø8 DIN 472 INOX			Snap-ring	14
15	Grano			M3x4 DIN 913			Grub screw	15
16	Vite			M2.5x6 DIN 912			Screw	16
17	O-Ring			Ø1x4 (GUAR-091)			O-Ring	17
18	Rosetta elastica			Ø2.7 UNI 1751-B			Elastic washer	18
19	O-Ring			Ø1.78x2.90 (GUAR-057V)			O-Ring	19



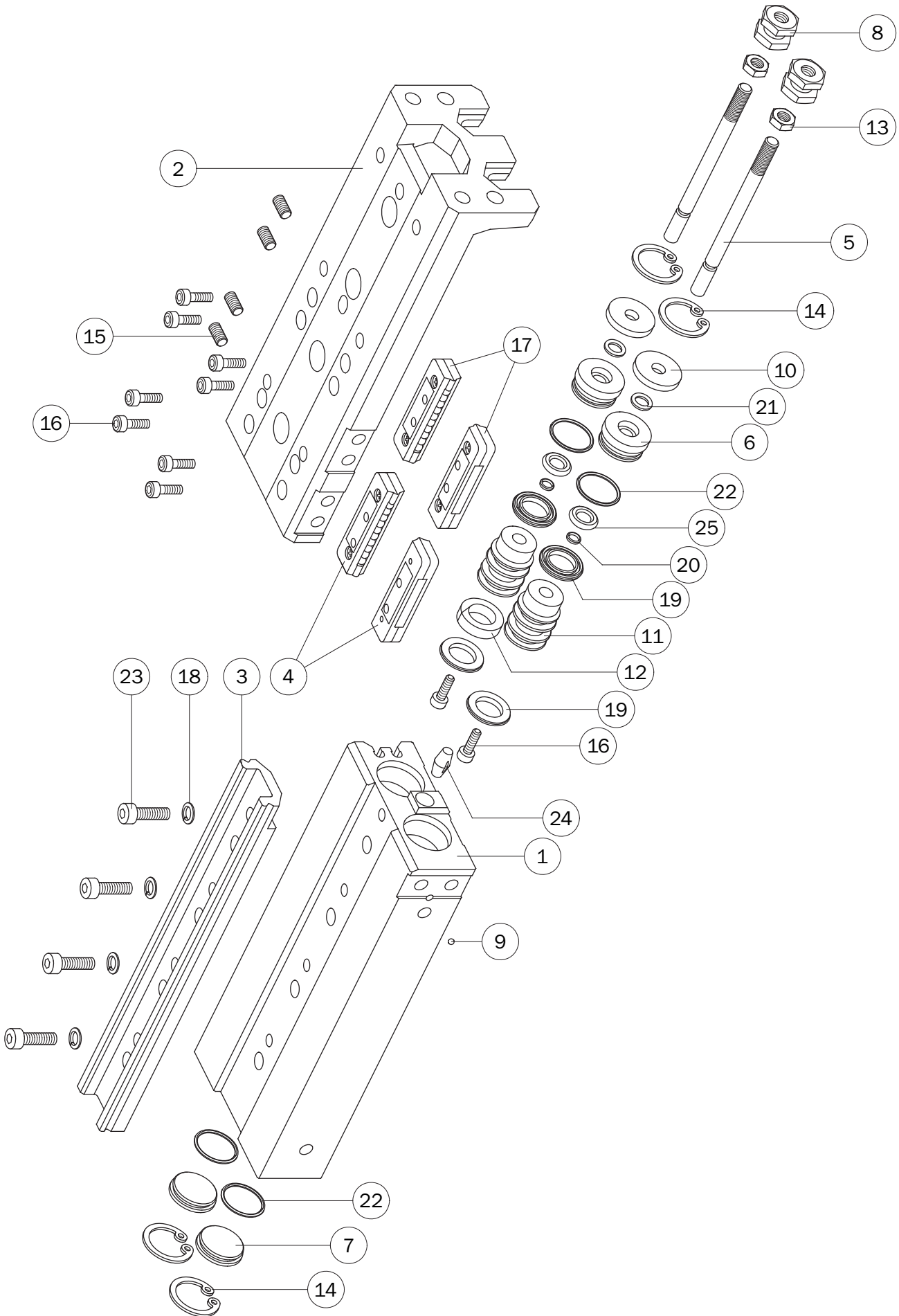
Elenco delle parti / Part list

		ZA0810	ZA0820	ZA0830	ZA0840	ZA0850	ZA0875		
1	Corpo slitta	ZA0810-01	ZA0820-01	ZA0830-01	ZA0840-01	ZA0850-01	ZA0875-01	Slide housing	1
2	Carrello	ZA0810-02	ZA0820-02	ZA0830-02	ZA0840-02	ZA0850-02	ZA0875-02	Carrier	2
3	Guida	ZA0810-03	ZA0820-03	ZA0830-03	ZA0840-03	ZA0850-03	ZA0875-03	Guideway	3
4	Cartuccia ricircolo di sfere		CZ236 (x2)		CZ244 (x2)	CZ226 (x4)	CZ236 (x4)	Ball bushing	4
5	Stelo	ZA0810-04	ZA0820-10	ZA0830-04	ZA0840-04	ZA0850-04	ZA0875-04	Piston rod	5
6	Flangia anteriore	Z-0850-8						Front flange	6
7	Flangia posteriore	ZA0820-06						Rear flange	7
8	Giunto	ZA0820-11						Bolt	8
9	Riduzione Ø1	EPP20-05						Air restrictor	9
10	Disco flangia anteriore	ZA0820-05						Front flange plate	10
11	Pistone Ø12	ZA0820-04						Piston	11
12	Magnete	ZA0820-12						Magnet	12
13	Dado	M3 DIN 439B INOX						Nut	13
14	Anello elastico	Ø9 DIN 472						Snap-ring	14
15	Grano	M3x5 DIN 913						Grub screw	15
16	Vite	M2.5x6 DIN 912						Screw	16
17	Dado	M2 UNI 5587 INOX						Nut	17
18	Rosetta elastica	Ø3.2 UNI 1751-B						Elastic washer	18
19	O-Ring	Ø1.78x4.48 (GUAR-029)						O-Ring	19
20	O-Ring	Ø1x2 (GUAR-130)						O-Ring	20
21	O-Ring	Ø1.78x3.69 (GUAR-044)						O-Ring	21
22	O-Ring	Ø1.78x6.07 (GUAR-039)						O-Ring	22
23	Vite	M3x8 DIN 912						Screw	23
24	Gommino	Ø3 AM-001						Rubber bumper	24



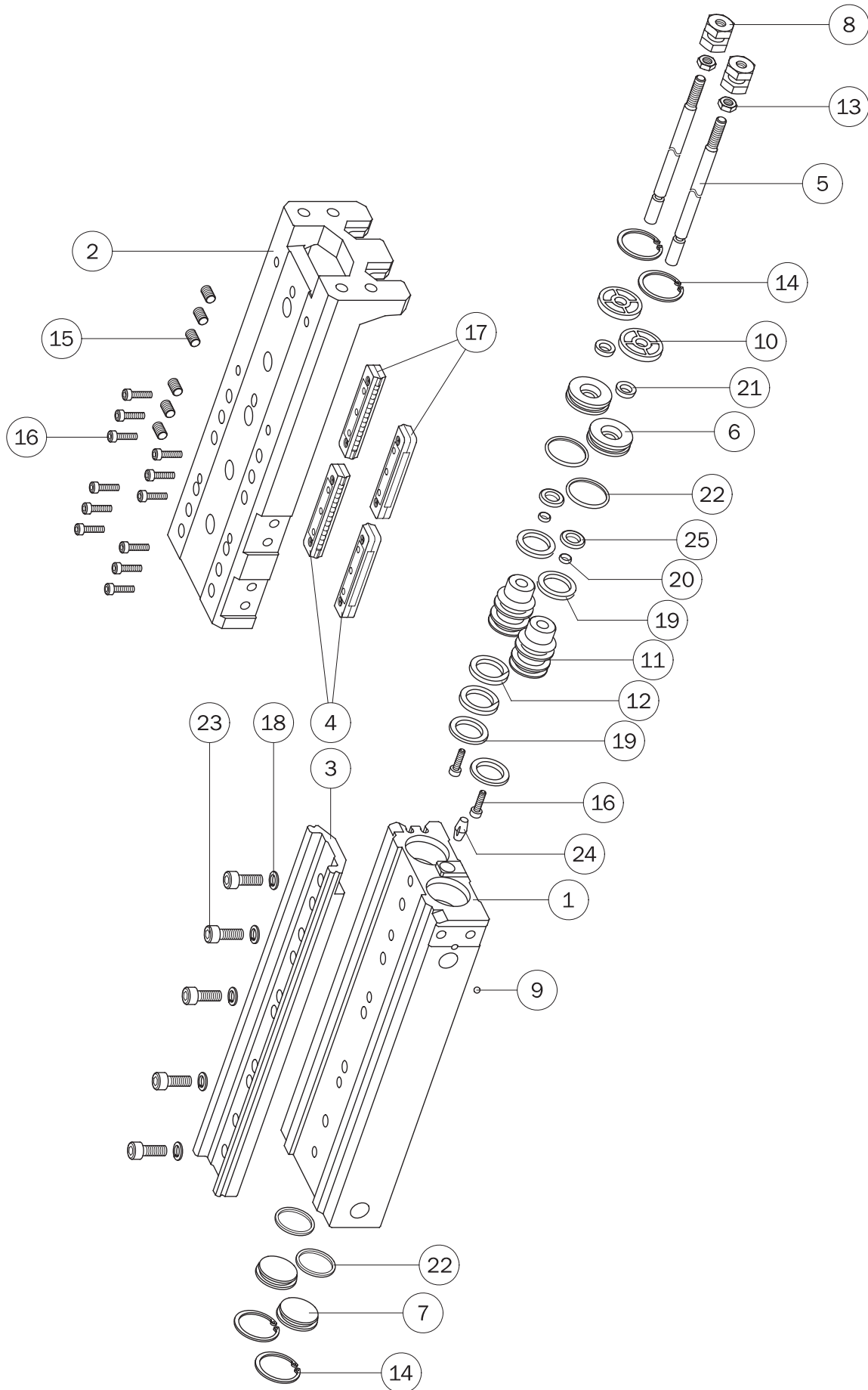
Elenco delle parti / Part list

		ZA1210	ZA1220	ZA1230	ZA1240	ZA1250	ZA1275	ZA12100		
1	Corpo slitta	ZA1210-01			ZA1240-01	ZA1250-01	ZA1275-01	ZA12100-01	Slide housing	1
2	Carrello	ZA1210-02	ZA1220-02	ZA1230-02	ZA1240-02	ZA1250-02	ZA1275-02	ZA12100-02	Carrier	2
3	Guida	ZA1210-04			ZA1240-04	ZA1250-11	ZA1275-04	ZA12100-04	Guideway	3
4	Cartuccia ricircolo di sfere	CZ334 (x2)				CZ342 (x2)	CZ326 (x4)	CZ334 (x4)	Ball bushing	4
5	Stelo	ZA1210-03	ZA1220-01	ZA1230-01	ZA1240-03	ZA1250-05	ZA1275-03	ZA12100-03	Piston rod	5
6	Flangia anteriore					ZA1250-06			Front flange	6
7	Flangia posteriore					ZA1250-07			Rear flange	7
8	Giunto					ZA1250-03			Bolt	8
9	Riduzione Ø1					ZA1250-12			Air restrictor	9
10	Disco flangia anteriore					ZA1250-13			Front flange plate	10
11	Pistone Ø12					ZA1250-04			Piston	11
12	Magnete					ZA1250-14			Magnet	12
13	Dado					M4 DIN 934 INOX A2			Nut	13
14	Anello elastico					Ø13 DIN 472			Snap-ring	14
15	Grano					M4x5 DIN 913			Grub screw	15
16	Vite					M3x8 DIN 912			Screw	16
17	Vite					M3x10 DIN 965A INOX A2			Screw	17
18	Rosetta elastica					Ø4.3 UNI 1751-B			Elastic washer	18
19	Guarnizione					12.5x6.8x2.55 (GUAR-118)			Gasket	19
20	O-Ring					Ø1x3 (GUAR-082)			O-Ring	20
21	O-Ring					Ø1.78x4.48 (GUAR-029)			O-Ring	21
22	O-Ring					Ø1.78x8.73 (GUAR-013)			O-Ring	22
23	Vite					M4x10 DIN 912			Screw	23
24	Gommino					Ø4 AM-002			Rubber bumper	24



Elenco delle parti / Part list

		ZA1610	ZA1620	ZA1630	ZA1640	ZA1650	ZA1675	ZA16100	ZA16125		
1	Corpo slitta	ZA1630-01			ZA1640-01	ZA1650-01	ZA1675-01	ZA16100-01	ZA16125-01	Slide housing	1
2	Carrello	ZA1610-02	ZA1630-02		ZA1640-02	ZA1650-02	ZA1675-02	ZA16100-02	ZA16125-02	Carrier	2
3	Guida	ZA1630-09			ZA1640-04	ZA1650-04	ZA1675-04	ZA16100-04	ZA16125-04	Guideway	3
4	Cartuccia ricircolo di sfere	CZ334 (x2)				CZ342	CZ326A (x2)	CZ342 (x2)		Ball bushing	4
5	Stelo	ZA1610-01	ZA1620-01	ZA1630-05	ZA1640-03	ZA1650-05	ZA1675-03	ZA16100-03	ZA16125-03	Piston rod	5
6	Flangia anteriore	ZE1630-03								Front flange	6
7	Flangia posteriore	GS-16-06R								Rear flange	7
8	Giunto	ZA1630-03								Bolt	8
9	Sfera	Ø2 AA DIN 5401 A								Ball	9
10	Disco flangia anteriore	ZE1630-05								Front flange plate	10
11	Pistone Ø12	ZA1630-04								Piston	11
12	Magnete	PS-0016-P09								Magnet	12
13	Dado	M5 DIN 439B INOX A2								Nut	13
14	Anello elastico	Ø17 DIN 472 INOX								Snap-ring	14
15	Grano	M4x8 DIN 913								Grub screw	15
16	Vite	M3x10 DIN 912								Screw	16
17	Cartuccia ricircolo di sfere	-	-	-	-	-	CZ326 (x2)	CZ326 (x2)	CZ342 (x2)	Ball bushing	17
18	Rosetta elastica	Ø4.3 UNI 1751-B								Elastic washer	18
19	Guarnizione	Ø16x10x3 (GUAR-051)								Gasket	19
20	O-Ring	Ø1x3 (GUAR-082)								O-Ring	20
21	O-Ring	Ø1.78x4.48 (GUAR-029)								O-Ring	21
22	O-Ring	Ø1x14 (GUAR-084)								O-Ring	22
23	Vite	M4x12 DIN 912								Screw	23
24	Gommino	Ø5 AM-003								Rubber bumper	24
25	O-Ring	Ø2.62x5.23 (GUAR-053S)								O-Ring	25



Elenco delle parti / Part list

		ZA2010	ZA2020	ZA2030	ZA2040	ZA2050	ZA2075	ZA20100	ZA20125	ZA20150		
1	Corpo slitta	ZA2030-01			ZA2040-01	ZA2050-01	ZA2075-01	ZA20100-01	ZA20125-01	ZA20150-01	Slide housing	1
2	Carrello	ZA2010-02	ZA2020-02	ZA2030-02	ZA2040-02	ZA2050-02	ZA2075-02	ZA20100-02	ZA20125-02	ZA20150-02	Carrier	2
3	Guida	ZA2030-09			ZA2040-04	ZA2050-04	ZA2075-04	ZA20100-04	ZA20125-04	ZA20150-04	Guideway	3
4	Cartuccia ricircolo di sfere	CZ342 (x2)				CZ348 (x2)	CZ326A (x2)	CZ334 (x2)	CZ334 (x2)	CZ326 (x6)	Ball bushing	4
5	Stelo	ZA2010-01	ZA2020-01	ZA2030-06	ZA2040-03	ZA2050-03	ZA2075-03	ZA20100-03	ZA20125-03	ZA20150-03	Piston rod	5
6	Flangia anteriore	Z-2050-8									Front flange	6
7	Flangia posteriore	GS-20-06R									Rear flange	7
8	Giunto	ZA2030-03									Bolt	8
9	Sfera	Ø3 AA DIN 5401A									Ball	9
10	Disco flangia anteriore	ZA2030-05									Front flange plate	10
11	Pistone Ø12	ZA2030-04									Piston	11
12	Magnete	PAR-20-10B									Magnet	12
13	Dado	M5 DIN 439B INOX A2									Nut	13
14	Anello elastico	Ø22 DIN 472 INOX									Snap-ring	14
15	Grano	M5x8 DIN 913									Grub screw	15
16	Vite	M3x12 DIN 912									Screw	16
17	Cartuccia ricircolo di sfere	-	-	-	-	-	CZ326A (x2)	CZ334 (x2)	CZ342 (x2)	-	Ball bushing	17
18	Rosetta elastica	Ø5 UNI 1751-B									Elastic washer	18
19	Guarnizione	20.7x13.75x2.55 (GUAR-120)									Gasket	19
20	O-Ring	Ø1.78x2.90 (GUAR-057)									O-Ring	20
21	Guarnizione	Ø10x6x3.5 (GUAR-093)									Gasket	21
22	O-Ring	Ø1.78x17.17 (GUAR-076)									O-Ring	22
23	Vite	M5x14 DIN 912									Screw	23
24	Gommino	Ø6 AM-004									Rubber bumper	24
25	O-Ring	Ø2.62x5.23 (GUAR-053S)									O-Ring	25

Connessione pneumatica

La slitta si alimenta con aria compressa dai fori laterali (A e B) montandovi i raccordi dell'aria ed i relativi tubi (non forniti).

Aria compressa in A: chiusura.
Aria compressa in B: apertura.

La slitta è azionata con aria compressa filtrata (5÷40 µm) non necessariamente lubrificata.
La scelta iniziale, lubrificata o non lubrificata, deve essere mantenuta per tutto il periodo di servizio.

L'impianto pneumatico deve essere pressurizzato gradualmente, per evitare movimenti incontrollati.

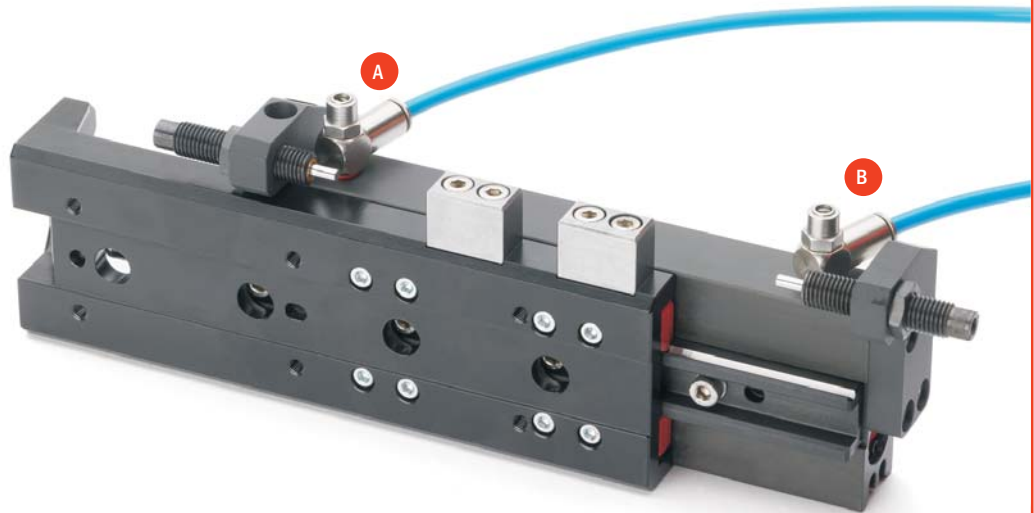
Compressed air feeding

The compressed air feeding must be accomplished on the lateral air ports (A and B) with fittings and hoses (not supplied).

Compressed air in A: retraction stroke.
Compressed air in B: extension stroke.

The compressed air, must be filtered from 5 to 40 µm.
Maintain the medium selected at the start, lubricated or not, for the complete service life of the slide.

The pneumatic circuit must be pressurized progressively, to avoid uncontrolled movements.



ATTUATORI LINEARI
LINEAR ACTUATORS

Circuito pneumatico

Possibili inconvenienti sul circuito di alimentazione dell'aria compressa:

- 1- Oscillazioni di pressione.
- 2- Riempimento all'avvio.
- 3- Improvvisa mancanza di pressione.
- 4- Velocità di azionamento eccessiva.

Accorgimenti per risolvere i problemi:

- 1- Serbatoio esterno (E).
- 2- Valvola di avviamento progressivo (G).
- 3- Valvole di sicurezza (C).
- 4- Regolatori di flusso (D).

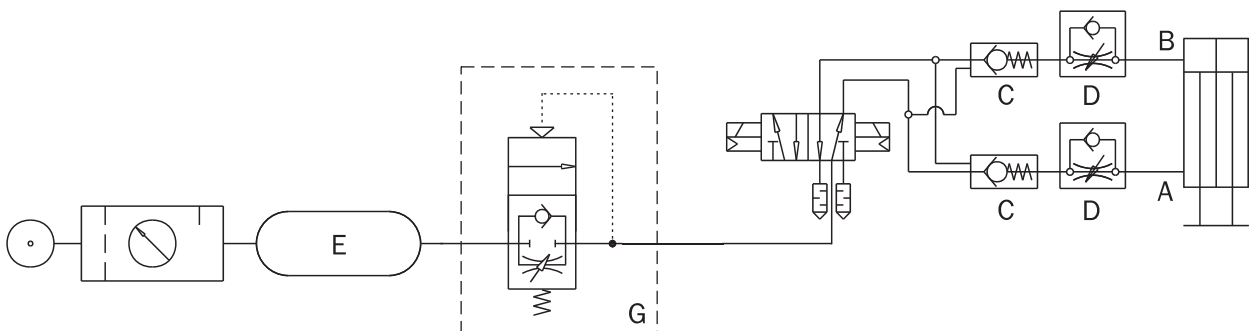
Pneumatic circuit

Possible problems on a compressed air circuit:

- 1- Pressure variation.
- 2- Pressurizing.
- 3- Sudden pressure black-out.
- 4- Excessive speed.

Possible solutions:

- 1- Compressed air storage (E).
- 2- Start-up valve (G).
- 3- Safety valve (C).
- 4- Flow controller (D).



Avvertenze

Evitare il contatto con sostanze corrosive, spruzzi di saldatura, polveri abrasive, che potrebbero danneggiare la funzionalità della slitta.

Per nessun motivo, persone od oggetti estranei devono entrare nel raggio d'azione della slitta.

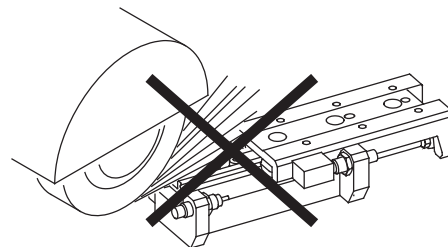
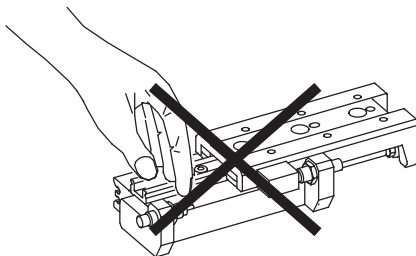
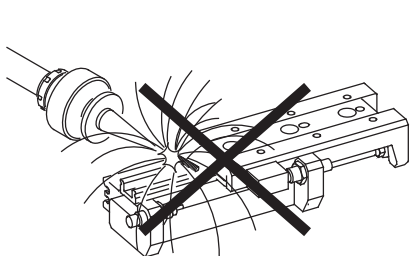
La slitta non deve essere messa in servizio prima che la macchina di cui fa parte sia stata dichiarata conforme alle disposizioni di sicurezza vigenti.

Caution

Never let the slide come into contact with corrosive substances, soldering splashes or abrasive powders as they may damage the slide.

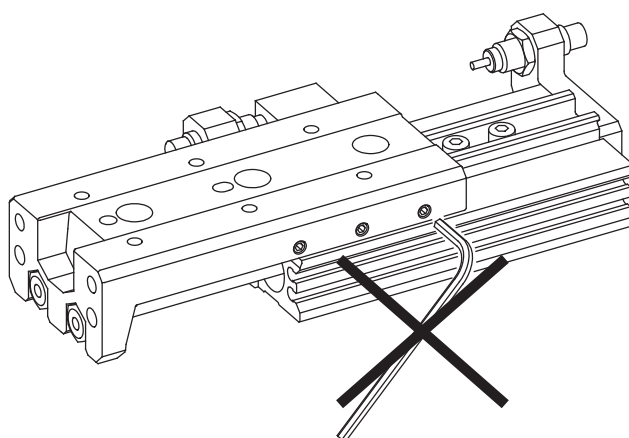
Never let non-authorized persons or objects stand within the operating range of the slide.

Never operate the slide if the machine on which it is fitted does not comply with safety laws and standards of your country.



Il precarico dei cuscinetti è regolato in fabbrica.
NON UTILIZZARE MAI LE VITI DI REGOLAZIONE PER MODIFICARLO.

The preload of the bearings is set in factory.
NEVER USE THE ADJUSTING SCREWS TO MODIFY IT.



In normali condizioni di utilizzo, in un ambiente pulito, la slitta non necessita di alcuna manutenzione per 10 milioni di cicli.

If properly used, in a clean environment, the slide needs no maintenance for 10 million cycles.

Controllare periodicamente le colonne di guida e lubrificarle quando sono secche.
L'apposito grasso è disponibile in tubetti da 90 grammi.
Codice di ordinazione: GLP500-90.

Periodically check the steel bars and lubricate when dry.
The suitable grease is available in 90 grams tubes.
Ordering code: GLP500-90.

Controllare periodicamente l'efficienza dei deceleratori e sostituirli subito se manifestano un decadimento delle loro prestazioni di smorzamento.

Periodically check the efficiency of the shock-absorbers and replace them immediately if their damping performances decrease.

Quando si avita la battuta, prestare attenzione al verso di montaggio. Se montata al contrario può interferire con il corpo della slitta e danneggiare i cuscinetti.

When mounting the stopper on the slide, be careful to position it properly. If wrongly assembled, the stopper can interfere with the slide body and damage the linear bearings.

