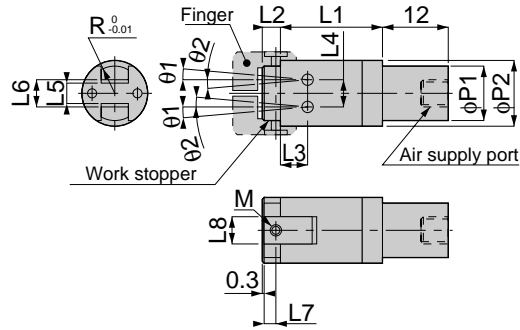


Actuator Series Closing Gripper Series



Shank Type



unit:mm

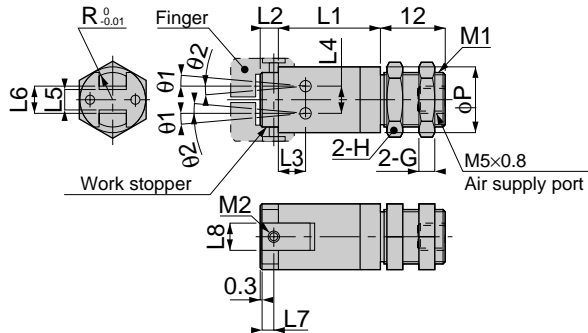
Model	M	R	L1	L2	L3	L4	L5	L6	L7	L8	φP1	φP2	θ1	θ2	Mass (g)
CHM 08AAK	M2×0.4	R5	19.5	3	5	5	4	5	2	5	10	12	10°	4.5°	21.5
CHM 11AAK	M2.5×0.45	R6.5	23.5	4	5.5	6	4.5	6	2.5	7	12	16	8°	4.5°	41



1



Panel Mount Type



unit:mm

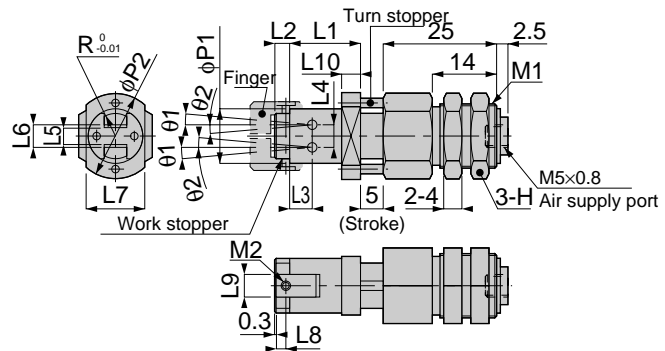
Model	M1	M2	R	L1	L2	L3	L4	L5	L6	L7	L8	φP	θ1	θ2	H	G	Mass (g)
CHM 08ABK	M10×1	M2×0.4	R5	19.5	3	5	5	4	5	2	5	12	10°	4.5°	12	3	22
CHM 11ABK	M12×1	M2.5×0.45	R6.5	23.5	4	5.5	6	4.5	6	2.5	7	16	8°	4.5°	14	4	43.5



1



Floating Panel Mount Type Fingers in Parallel



unit:mm

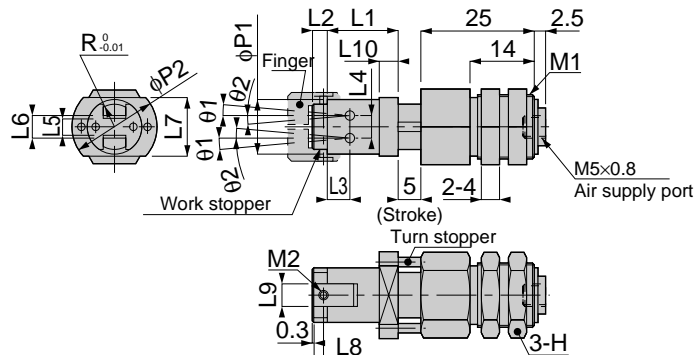
Model	M1	M2	R	L1	L2	L3	L4	L5	L6	L7	L8	L9	L10	φP1	φP2	θ1	θ2	H	Mass (g)
CHM 08ACK	M14×1	M2×0.4	R5	15.5	3	5	5	4	5	13	2	5	4	12	19	10°	4.5°	17	58
CHM 11ACK	M18×1	M2.5×0.45	R6.5	18.5	4	5.5	6	4.5	6	17	2.5	7	5	16	24	8°	4.5°	22	104.5



1



Floating Panel Mount Type Fingers at Right Angle



unit:mm

Model	M1	M2	R	L1	L2	L3	L4	L5	L6	L7	L8	L9	L10	φP1	φP2	θ1	θ2	H	Mass (g)
CHM 08ADK	M14×1	M2×0.4	R5	15.5	3	5	5	4	5	13	2	5	4	12	19	10°	4.5°	17	58
CHM 11ADK	M18×1	M2.5×0.45	R6.5	18.5	4	5.5	6	4.5	6	17	2.5	7	5	16	24	8°	4.5°	22	104.5

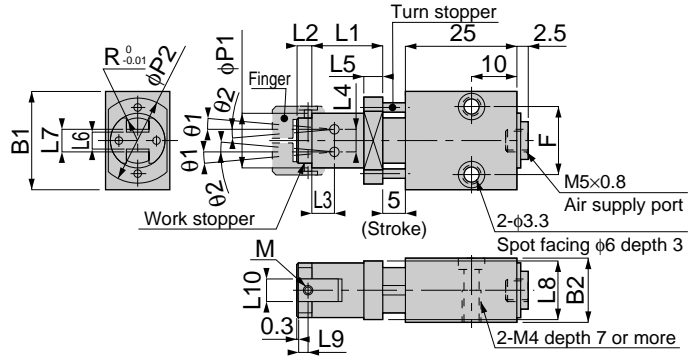


1

Actuator Series Closing Gripper Series

CHM A K

Floating Block Type
Fingers in Parallel



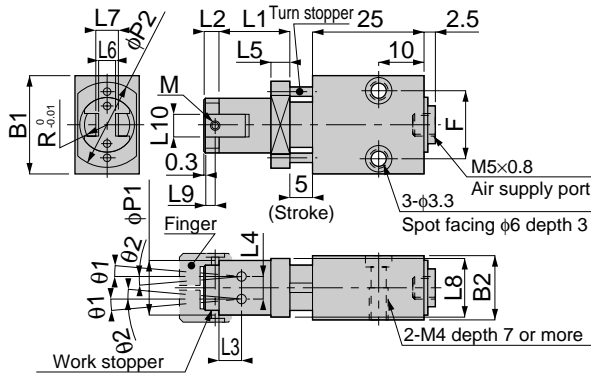
Model	M	R	B1	B2	L1	L2	L3	L4	L5	L6	L7	L8	L9	L10	$\phi P1$	$\phi P2$	$\theta 1$	$\theta 2$	F	Mass (g)
CHM 08AEK	M2x0.4	R5	22	14	15.5	3	5	5	4	4	5	13	2	5	12	19	10°	4.5°	15	73
CHM 11AEK	M2.5x0.45	R6.5	25	18	18.5	4	5.5	6	5	4.5	6	17	2.5	7	16	24	8°	4.5°	18	117

unit:mm



CHM A K

Floating Block Type
Fingers at Right Angle



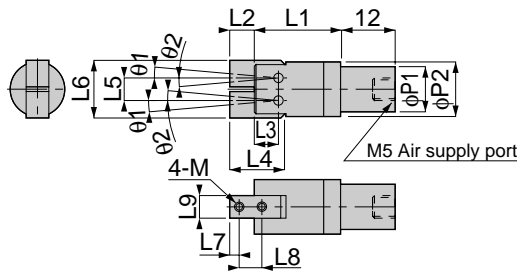
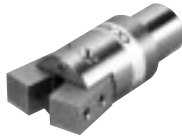
Model	M	R	B1	B2	L1	L2	L3	L4	L5	L6	L7	L8	L9	L10	$\phi P1$	$\phi P2$	$\theta 1$	$\theta 2$	F	Mass (g)
CHM 08AFK	M2x0.4	R5	22	14	15.5	3	5	5	4	4	5	13	2	5	12	19	10°	4.5°	15	73
CHM 11AFK	M2.5x0.45	R6.5	25	18	18.5	4	5.5	6	5	4.5	6	17	2.5	7	16	24	8°	4.5°	18	117

unit:mm



CHM A

Shank Type



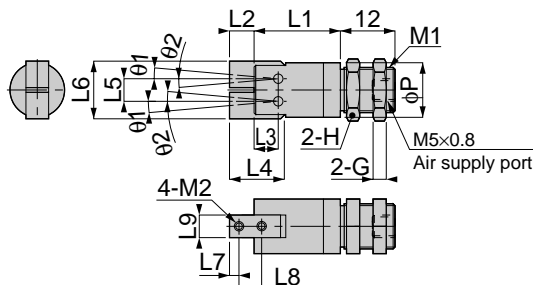
Model	M	L1	L2	L3	L4	L5	L6	L7	L8	L9	$\phi P1$	$\phi P2$	$\theta 1$	$\theta 2$	Mass (g)
CHM 08AAS	M2x0.4	19.5	5.5	5	12	5	13	2.5	5	5	10	12	10°	4.5°	22
CHM 11AAS	M2.5x0.45	23.5	7	5.5	14	6	17	3	6	7	12	16	8°	4.5°	43

unit:mm



CHM A

Panel Mount Type




Model	M1	M2	L1	L2	L3	L4	L5	L6	L7	L8	L9	ϕP	$\theta 1$	$\theta 2$	H	G	Mass (g)
CHM 08ABS	M10x1	M2x0.4	19.5	5.5	5	12	5	13	2.5	5	5	12	10°	4.5°	12	3	23.5
CHM 11ABS	M12x1	M2.5x0.45	23.5	7	5.5	14	6	17	3	6	7	16	8°	4.5°	14	4	45.5

unit:mm



Blank Finger

 Finger blank specifically designed for K type finger

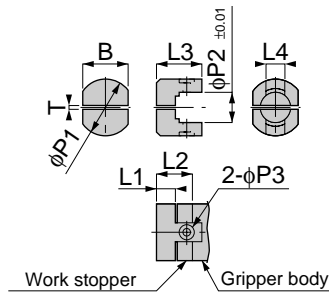
Features

- Accurate centering is realized by the R combination of the finger blank and the master fingers.
- Use the finger blank by forming it according to the shape of your work.
- Remove the work stopper when it is not necessary.
- Nitriding proves effective if the wear of the fingers is to be prevented.

*Finger material: SF20T (Cr19~21%, Mo5~2.5%)

CHM

Blank Finger



Unit : mm

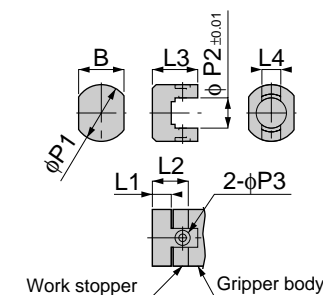
Type	B	L1	L2	L3	L4	T	φP1	φP2	φP3	Mounting screw (provided)	Applicable Gripper	Mass (g)
CHM 08AK11	6	5	8	11.5	5	1	15	10	2.1	Hex Socket Head Cap Screws M2×4/ 2pieces	CHM 08A□K Type	4
CHM 08AK12		10	13	16.5								7
CHM 08AK13	12	5	8	11.5								6.5
CHM 08AK14		10	13	16.5			12					
CHM 08AK15	16	5	8	11.5			11.5					
CHM 08AK16		10	13	16.5			22					
CHM 11AK11	8	6	10	14.5	7	2	20	13	2.6	Hex Socket Head Cap Screws M2.5×5/ 2pieces	CHM 11A□K Type	8
CHM 11AK12	12	16	20.5	14.5								
CHM 11AK13	16	6	10	14.5								12.5
CHM 11AK14		12	16	20.5								24



1

CHM

Slotless Solid Blank



Unit : mm

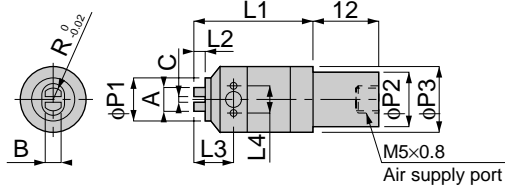
Type	B	L1	L2	L3	L4	φP1	φP2	φP3	Mounting screw (provided)	Applicable Gripper	Mass (g)
CHM 08AK01	6	5	8	11.5	5	15	10	2.1	Hex Socket Head Cap Screws M2×4/ 2pieces	CHM 08A□K Type	4.5
CHM 08AK02		10	13	16.5							7.5
CHM 08AK03	12	5	8	11.5							7
CHM 08AK04		10	13	16.5							13
CHM 08AK05	16	5	8	11.5							12.5
CHM 08AK06		10	13	16.5							23
CHM 11AK01	8	6	10	14.5	7	20	13	2.6	Hex Socket Head Cap Screws M2.5×5/ 2pieces	CHM 11A□K Type	8.5
CHM 11AK02	12	16	20.5	16							
CHM 11AK03	16	6	10	14.5							14
CHM 11AK04		12	16	20.5							29



1

CHM B

Shank Type

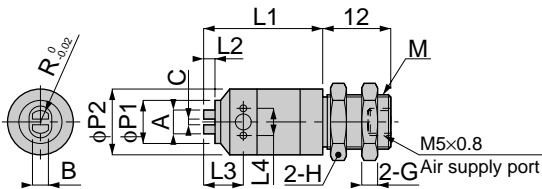


unit:mm

Model	Work size	R	A	B	L1	L2	L3	L4	φP1	φP2	φP3	C	Mass (g)
CHM 08BA03C	Groove width 3-5	-	3	3	22	2	7.5	5	8	10	12	1	18
CHM 08BA05C	Groove width 5-7		5	4		3			10				
CHM 08BA07C	Groove width 7-9		7	4		4			12				
CHM 08BA02H	Hole φ2~3	R1	2	1.6	22	1	7.5	5	5	10	12	0.5	18
CHM 08BA03H	Hole φ3~4	R1.5	3	2		1.5			6			18.5	
CHM 08BA04H	Hole φ4~6	R2	4	3		2			8			1	18
CHM 08BA06H	Hole φ6~8	R3	6	4	3	10							
CHM 08BA08H	Hole φ8~10	R4	8		4	4	12	18.5					
CHM 11BA06C	Groove width 6-8	-	6	6	28	4	10	6	12	12	16	1.5	37
CHM 11BA08C	Groove width 8-10		8			5			14				
CHM 11BA10C	Groove width 10-12		10			6			16				
CHM 11BA12C	Groove width 12-14		12			6		10	12	16	1.5	38	
CHM 11BA06H	Hole φ6~8	R3	6	4	28	3	10	6	10	12	16	1.5	37
CHM 11BA08H	Hole φ8~10	R4	8	4		4			12				
CHM 11BA10H	Hole φ10~12	R5	10	6		5			14				
CHM 11BA12H	Hole φ12~14	R6	12			6		16				1.5	38

CHM B

Panel Mount Type



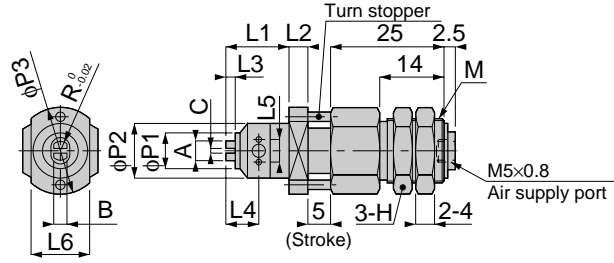
unit:mm

Model	Work size	M	R	A	B	L1	L2	L3	L4	φP1	φP2	C	H	G	Mass (g)
CHM 08BB03C	Groove width 3-5	M10×1	-	3	3	22	2	7.5	5	8	12	1	12	3	19.5
CHM 08BB05C	Groove width 5-7			5	4		3			10					
CHM 08BB07C	Groove width 7-9			7	4		4			12					
CHM 08BB02H	Hole φ2~3	M10×1	R1	2	1.6	22	1	7.5	5	5	12	0.5	12	3	19.5
CHM 08BB03H	Hole φ3~4		R1.5	3	2		1.5			6					
CHM 08BB04H	Hole φ4~6		R2	4	3		2			8					
CHM 08BB06H	Hole φ6~8	M10×1	R3	6	4	22	3	7.5	5	10	12	1	12	3	20
CHM 08BB08H	Hole φ8~10		R4	8			4			4					
CHM 11BB06C	Groove width 6-8		M12×1	-	6		6			28					
CHM 11BB08C	Groove width 8-10	8			5	14									
CHM 11BB10C	Groove width 10-12	10			6	16									
CHM 11BB12C	Groove width 12-14		12				6		10	16	1.5	14	4	40.5	
CHM 11BB06H	Hole φ6~8	M12×1	R3	6	4	28	3	10	6	10	16	1.5	14	4	39.5
CHM 11BB08H	Hole φ8~10		R4	8	4		4			12					
CHM 11BB10H	Hole φ10~12		R5	10	6		5			14					
CHM 11BB12H	Hole φ12~14	R6	12				6		16					40.5	

Actuator Series Opening Gripper Series

CHM B

Floating Panel Mount Type
Fingers in Parallel



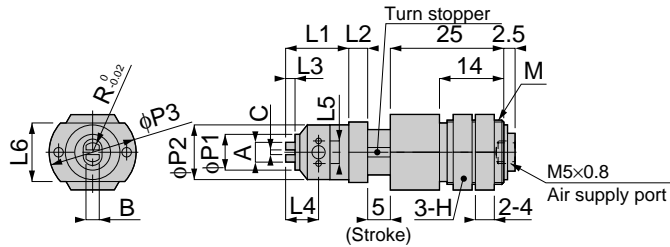
unit:mm

Model	Work size	M	R	A	B	L1	L2	L3	L4	L5	L6	φP1	φP2	φP3	C	H	Mass (g)
CHM 08BC03C	Groove width 3-5	M14x1	-	3	3	14	4	2	7.5	5	13	8	12	19	1	17	70.5
CHM 08BC05C	Groove width 5-7			5	4			3				10					
CHM 08BC07C	Groove width 7-9			7	4			4				12					
CHM 08BC02H	Hole φ2~3		R1	2	1.6			5				0.5					
CHM 08BC03H	Hole φ3~4		R1.5	3	2			6				1					
CHM 08BC04H	Hole φ4~6		R2	4	3			8				1					
CHM 08BC06H	Hole φ6~8		R3	6	4			10				1					
CHM 08BC08H	Hole φ8~10		R4	8	4			12				1					
CHM 11BC06C	Groove width 6-8	M18x1	-	6	6	18	5	4	10	6	17	12	16	24	1.5	22	113
CHM 11BC08C	Groove width 8-10			8				5				14					113.5
CHM 11BC10C	Groove width 10-12			10				6				16					114
CHM 11BC12C	Groove width 12-14			12				6				16					114
CHM 11BC06H	Hole φ6~8		R3	6				4				10					113
CHM 11BC08H	Hole φ8~10		R4	8				4				12					113
CHM 11BC10H	Hole φ10~12		R5	10				6				14					113.5
CHM 11BC12H	Hole φ12~14		R6	12				6				16					114



CHM B

Floating Panel Mount Type
Fingers at Right Angle



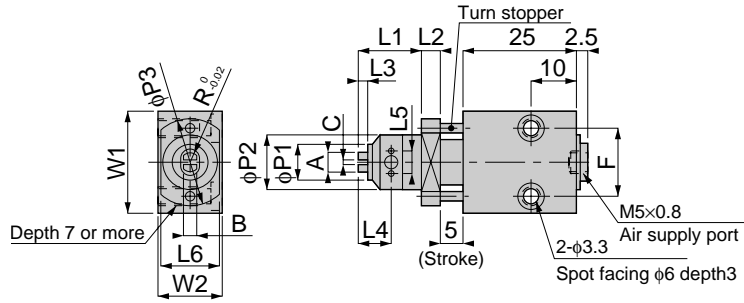
unit:mm

Model	Work size	M	R	A	B	L1	L2	L3	L4	L5	L6	φP1	φP2	φP3	C	H	Mass (g)
CHM 08BD03C	Groove width 3-5	M14x1	-	3	3	14	4	2	7.5	5	13	8	12	19	1	17	70.5
CHM 08BD05C	Groove width 5-7			5	4			3				10					
CHM 08BD07C	Groove width 7-9			7	4			4				12					
CHM 08BD02H	Hole φ2~3		R1	2	1.6			5				0.5					
CHM 08BD03H	Hole φ3~4		R1.5	3	2			6				1					
CHM 08BD04H	Hole φ4~6		R2	4	3			8				1					
CHM 08BD06H	Hole φ6~8		R3	6	4			10				1					
CHM 08BD08H	Hole φ8~10		R4	8	4			12				1					
CHM 11BD06C	Groove width 6-8	M18x1	-	6	6	18	5	4	10	6	17	12	16	24	1.5	22	113
CHM 11BD08C	Groove width 8-10			8				5				14					113.5
CHM 11BD10C	Groove width 10-12			10				6				16					114
CHM 11BD12C	Groove width 12-14			12				6				16					114
CHM 11BD06H	Hole φ6~8		R3	6				4				10					113
CHM 11BD08H	Hole φ8~10		R4	8				4				12					113
CHM 11BD10H	Hole φ10~12		R5	10				6				14					113.5
CHM 11BD12H	Hole φ12~14		R6	12				6				16					114



CHM_B

Floating Block Type
Fingers in Parallel



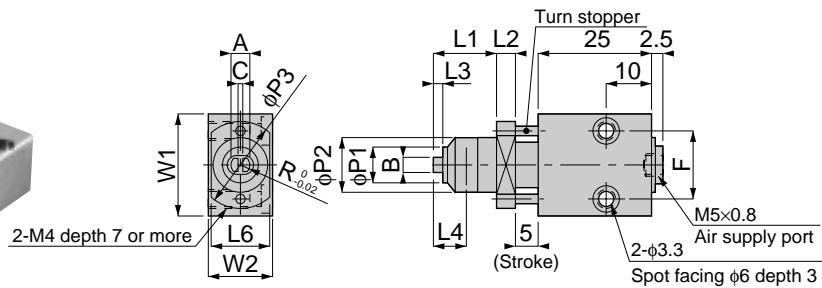
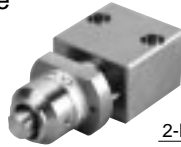
unit:mm

Model	Work size	R	A	B	L1	L2	L3	L4	L5	L6	W1	W2	φP1	φP2	φP3	C	F	Mass (g)	
CHM 08BE03C	Groove width 3-5	-	3	3	14	4	2	7.5	5	13	22	14	8	12	19	0.5	15	48.5	
CHM 08BE05C	Groove width 5-7		5	4			3						10						
CHM 08BE07C	Groove width 7-9		7	4			4						12						
CHM 08BE02H	Hole φ2~3	R1	2	1.6	14	4	1	7.5	5	13	22	14	5	12	19	0.5	15	48.5	
CHM 08BE03H	Hole φ3~4	R1.5	3	2			1.5						6						
CHM 08BE04H	Hole φ4~6	R2	4	3			2						8						
CHM 08BE06H	Hole φ6~8	R3	6	4	14	4	3	7.5	5	13	22	14	10	12	19	1	15	48.5	
CHM 08BE08H	Hole φ8~10	R4	8				4						12						
CHM 11BE06C	Groove width 6-8	-	6	6			18						5						4
CHM 11BE08C	Groove width 8-10		8		5	5		14	100.5										
CHM 11BE10C	Groove width 10-12		10		6	6		16	101										
CHM 11BE12C	Groove width 12-14	12	6	6	16	100.5													
CHM 11BE06H	Hole φ6~8	R3	6	4	18	5	3	10	6	17	25	18	10	16	24	1.5	18	100.5	
CHM 11BE08H	Hole φ8~10	R4	8	4			12						100.5						
CHM 11BE10H	Hole φ10~12	R5	10	6			5						101						
CHM 11BE12H	Hole φ12~14	R6	12	6	6	6	6	16	16	24	1.5	18	101						



CHM_B

Floating Block Type
Fingers at Right Angle



unit:mm

Model	Work size	R	A	B	L1	L2	L3	L4	L5	L6	W1	W2	φP1	φP2	φP3	C	F	Mass (g)	
CHM 08BF03C	Groove width 3-5	-	3	3	14	4	2	7.5	5	13	22	14	8	12	19	0.5	15	48.5	
CHM 08BF05C	Groove width 5-7		5	4			3						10						
CHM 08BF07C	Groove width 7-9		7	4			4						12						
CHM 08BF02H	Hole φ2~3	R1	2	1.6	14	4	1	7.5	5	13	22	14	5	12	19	0.5	15	48.5	
CHM 08BF03H	Hole φ3~4	R1.5	3	2			1.5						6						
CHM 08BF04H	Hole φ4~6	R2	4	3			2						8						
CHM 08BF06H	Hole φ6~8	R3	6	4	14	4	3	7.5	5	13	22	14	10	12	19	1	15	48.5	
CHM 08BF08H	Hole φ8~10	R4	8				4						12						
CHM 11BF06C	Groove width 6-8	-	6	6			18						5						4
CHM 11BF08C	Groove width 8-10		8		5	5		14	100.5										
CHM 11BF10C	Groove width 10-12		10		6	6		16	101										
CHM 11BF12C	Groove width 12-14	12	6	6	16	100.5													
CHM 11BF06H	Hole φ6~8	R3	6	4	18	5	3	10	6	17	25	18	10	16	24	1.5	18	100.5	
CHM 11BF08H	Hole φ8~10	R4	8	4			12						100.5						
CHM 11BF10H	Hole φ10~12	R5	10	6			5						101						
CHM 11BF12H	Hole φ12~14	R6	12	6	6	6	6	16	16	24	1.5	18	101.5						

