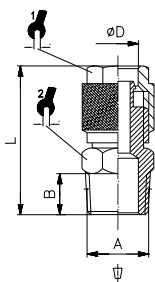


Klämrings-kopplingar Serie C & D



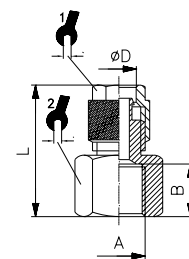
Material:	Förnicklad mässing
Gänga:	Konisk och cylindrisk enligt DIN 3852 (Del1 & Del2)
Gänganslutning:	M5-R1/2
Slangdimensioner:	4-15mm
Media:	Luft, Vatten, Olja, Ånga etc.
Max.tryck:	20bar

C1 Rak koppling utv.konisk



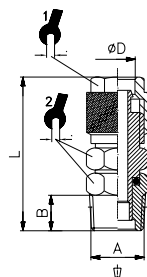
Art.nr	ØD	A	B	L			
60020	6/4	R1/8	7,5	25,6	10	12	100
60030	6/4	R1/4	11	29,6	10	14	100
60050	8/6	R1/8	7,5	26,9	12	14	100
60060	8/6	R1/4	11	30,9	12	14	100
60070	8/6	R3/8	11,5	31,4	12	17	100
60080	10/8	R1/4	11	33	14	14	100
60090	10/8	R3/8	11,5	33,5	14	17	100

C2 Rak koppling inv.



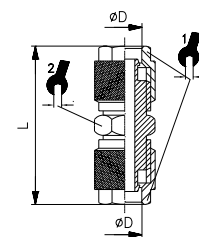
Art.nr	ØD	A	B	L			
60520	6/4	R1/8	7,5	23,3	10	14	100
60530	6/4	R1/4	11	27	10	17	100
60540	8/6	R1/8	7,5	24,7	12	14	100
60550	8/6	R1/4	11	28,7	12	17	100
60560	8/6	R3/8	11,5	29,2	12	22	100
60570	10/8	R1/4	11	30,5	14	17	100
60580	10/8	R3/8	11,5	33,3	14	22	50

C1/R Rak koppling utv.konisk svängbar



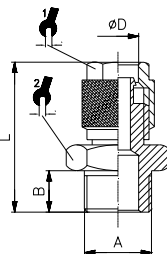
Art.nr	ØD	D1	L1	L2	S1			
60020	6/4	R1/8	7,5	31	12	11	11	100
60030	6/4	R1/4	11	34,5	12	14	14	100
60050	8/6	R1/8	7,5	32	14	12	11	100
60060	8/6	R1/4	11	35,5	14	14	14	100
60080	10/8	R1/4	11	37,5	16	14	14	100
60090	10/8	R3/8	11,5	38	16	14	17	100

C3 Skarvkoppling



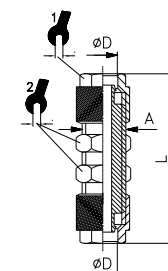
Art.nr	ØD	L			
60620	6/4	32,2	10	12	100
60635	8/6x6/4	35,5	12	12	100
60630	8/6	34,8	12	12	100
60642	10/8x6/4	35,6	14	14	100
60640	10/8	39	14	14	100

C1/Z Rak koppling utv.



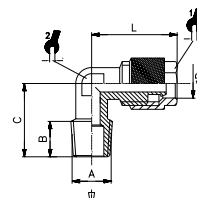
Art.nr	ØD	A	B	L			
60330	6/4	M5	4	22,1	8	9	100
60340	6/4	R1/8	6	25	10	13	100
60350	6/4	R1/4	8	27	10	17	100
60370	8/6	R1/8	6	25	12	14	100
60380	8/6	R1/4	8	27	12	17	100
60390	8/6	R3/8	9	30	12	19	100
60400	10/8	R1/4	8	30	14	17	50
60410	10/8	R3/8	9	31	14	19	50

C4 Skottgenomföring



Art.nr	ØD	A	L			
60720	6/4	M10x1	45	10	14	100
60730	8/6	M12x1	48,4	12	17	100
60740	10/8	M14x1	54	14	17	100

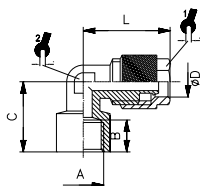
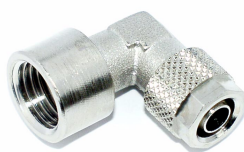
C5 Vinkelkoppling utv. konisk



Art.nr	ØD	A	B	C	L			
60830	6/4	G1/8	7,5	15	18,6	10	8	100
60840	6/4	G1/4	11	19	20,6	10	8	100
60860	8/6	G1/8	7,5	16,5	19,9	12	9	100
60870	8/6	G1/4	11	19	21,9	12	9	100
60880	8/6	G3/8	11,5	21	12	12	9	100
60890	10/8	G1/4	11	22	24	14	11	100
60900	10/8	G3/8	11,5	22	25,5	14	11	50

C5/F

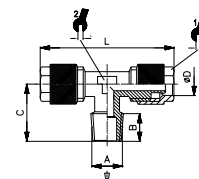
Vinkelkoppling inv.



Art.nr	ØD	A	B	C	L			
61110	6/4	R1/8	7,5	18	20,6	10	8	100
61120	6/4	R1/4	11	21	21,2	10	9	100
61130	8/6	R1/8	7,5	19	21,9	12	9	100
61140	8/6	R1/4	11	21	23,4	12	9	100
61160	10/8	R1/4	11	22	25,5	14	11	100

C7

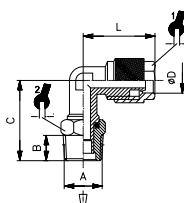
T-koppling utv.



Art.nr	ØD	A	B	C	L			
61330	6/4	R1/8	7,5	15	37,2	10	8	100
61340	6/4	R1/4	11	19	41,2	10	9	100
61350	8/6	R1/8	7,5	16,5	39,8	12	9	100
61360	8/6	R1/4	11	20,5	43,8	12	9	100
61370	8/6	R3/8	11,5	20,6	45	12	12	100
61380	10/8	R1/4	11	22	48	14	11	50
61390	10/8	R3/8	11,5	22	51	14	11	50

C5/R

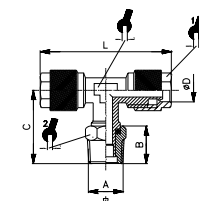
Vinkelkoppling utv.konisk
Svängbar



Art.nr	ØD	A	B	C	L			
61070	6/4	R1/8	7,5	21,5	20,6	10	12	100
61071	6/4	R1/4	11	25	20,6	10	14	100
61072	8/6	R1/8	7,5	21,5	21,6	12	12	100
61073	8/6	R1/4	11	26	23,1	12	14	100
61074	10/8	R1/4	11	27	24	14	14	100

C7/R

T-koppling utv.konisk
Svängbar



Art.nr	ØD	A	B	C	L			
61511	6/4	R1/8	7,5	21,5	41,2	10	12	100
61512	6/4	R1/4	11	25	41,2	10	14	100
61513	8/6	R1/8	7,5	22	43,2	12	12	100
61514	8/6	R1/4	11	25,5	43,2	12	14	100
61515	10/8	R1/4	11	27	48	14	14	100

C5/R Insex

Vinkelkoppling utv.
svängbar, insex, O-ring



Art.nr	ØD	D1	D2	L1	L3	L2	L4	S1	S2
61010	6/4	R1/8	14	6	25	16	25	6	12
61020	6/4	R1/4	17	8	26,5	18,5	27,5	6	12
61030	8/6	R1/8	14	6	25	16	25	6	14
61040	8/6	R1/4	17	8	27,5	18,5	27,5	6	14
61050	10/8	R1/4	17	8	28,5	22	33	8	16
61055	10/8	R3/8	21	9	30,5	23,5	34,5	8	16

C7/R Insex

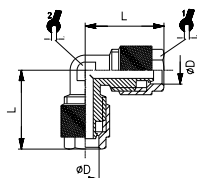
T-koppling utv.
svängbar, insex, O-ring



Art.nr	ØD	D1	D2	L1	L2	L3	L4	S1	S2
61510	6/4	R1/8	14	6	25	16	25	6	12
61520	6/4	R1/4	17	8	26,5	18,5	27,5	6	12
61530	8/6	R1/8	14	6	25	16	25	6	14
61540	8/6	R1/4	17	8	27,5	18,5	27,5	6	14
61550	10/8	R1/4	17	8	28,5	22	33	8	16
61555	10/8	R3/8	21	9	30,5	23,5	34,5	8	16

C6

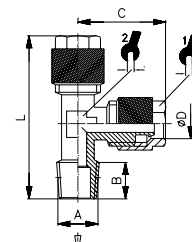
Vinkelkoppling



Art.nr	Ø	L			
61220	6/4	20,6	10	8	100
61230	8/6	21,9	12	9	100
61240	10/8	25,5	14	11	50

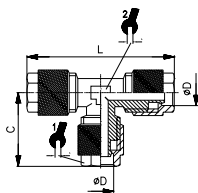
C8

T-koppling utv.konisk



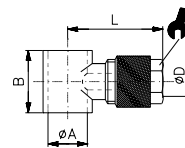
Art.nr	ØD	A	B	C	L			
61630	6/4	G1/8	7,5	20,6	36,7	10	8	100
61640	6/4	G1/4	11	20,6	40,2	10	8	100
61650	8/6	G1/8	7,5	21,9	38	12	9	100
61660	8/6	G1/4	11	21,9	41,5	12	9	100
61670	8/6	G3/8	11,5	21,9	45	12	12	50
61680	10/8	G1/4	11	25,5	45	14	11	50
61690	10/8	G3/8	11,5	25,5	45,5	14	11	50

C9 T-koppling



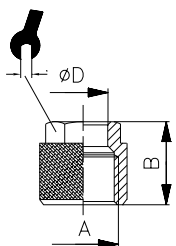
Art.nr	ØD	A	B	C	L			
61630	6/4	G1/8	7,5	20,6	36,7	10	8	100
61640	6/4	G1/4	11	20,6	40,2	10	8	100
61650	8/6	G1/8	7,5	21,9	38	12	9	100
61660	8/6	G1/4	11	21,9	41,5	12	9	100
61670	8/6	G3/8	11,5	21,9	45	12	12	50
61680	10/8	G1/4	11	25,5	45	14	11	50
61690	10/8	G3/8	11,5	25,5	45,5	14	11	50

D5 Enkelbanjo



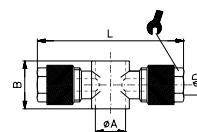
Art.nr	ØD	A	B	L		
63030	6/4	M5	9	16,5	9	100
63040	6/4	R1/8	14,5	23	10	100
63050	6/4	R1/4	14,5	26	10	100
63060	8/6	R1/8	14,5	23	12	100
63070	8/6	R1/4	14,5	26	12	100
63080	8/6	R3/8	14,5	26	12	100
63090	10/8	R1/4	14,5	29,5	14	50
63100	10/8	R3/8	14,5	30,5	14	50

C10 Mutter



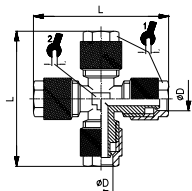
Art.nr	ØD	A	B		
61920	6/4	M8x0,75	11	8	100
61930	6/4	M10x1	11	10	100
61940	8/6	M12x1	11,5	12	100
61950	10/8	M14x1	13,5	14	100

D6 Dubbelbanjo



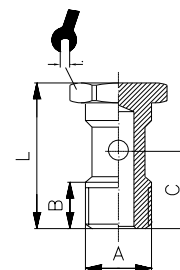
Art.nr	ØD	A	B	L		
63208	6/4	M5	9	33	9	100
63210	6/4	R1/8	14,5	46,6	10	100
63220	6/4	R1/4	14,5	50,6	10	100
63230	8/6	R1/8	14,5	50	12	100
63240	8/6	R1/4	14,5	55	12	100
63250	8/6	R3/8	14,5	55,4	12	100
63260	10/8	R1/4	14,5	59	14	50
63270	10/8	R3/8	14,5	61	14	50

C11 Korskoppling



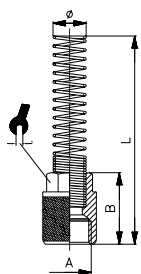
Art.nr	ØD	L			
62020	6/4	41,6	10	8	100
62030	8/6	44,4	12	9	100
62040	10/8	51	14	11	50

D7 Hålskruv för enkelbanjo



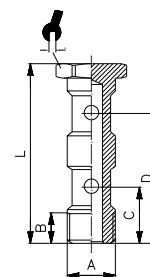
Art.nr	A	B	C	L		
70001	M5	4,5	9,6	17,5	8	100
70002	R1/8	7,5	15	28	14	50
70003	R1/4	11	18	33	17	50
70004	R3/8	12	21,5	37	22	50

C12 Knäckfjäder



Art.nr	ØD	A	B	L		
62110	6/4	M10x1	18	93	10	50
62120	8/6	M12x1	18	98	12	50
62130	10/8	M14x1	20	105	14	50

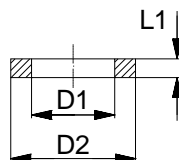
D8 Hålskruv för dubbelbanjo



Art.nr	A	B	C	D	L		
80002	R1/8	9	15	31	44,5	14	50
80003	R1/4	11	17	36	51,5	17	50
80004	R3/8	12	20,5	42	58,6	22	50

D11

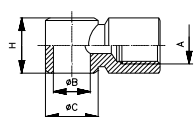
Aluminiumtätning



Art.nr	Ø	D1	D2	L1	
63900	M5	5,2	9	1	100
63910	1/8	10,3	14	1,5	100
63920	1/4	13,5	18	1,5	100
63930	3/8	17	22	1,5	50
63940	1/2	21,5	27	1,5	50

D12

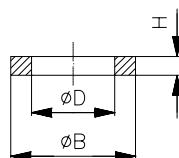
Banjokoppling inv.gänga



Art.nr	A	B	C	L		
70001	M5	4,5	9,6	17,5	8	100
70002	R1/8	7,5	15	28	14	50
70003	R1/4	11	18	33	17	50
70004	R3/8	12	21,5	37	22	50

D14

Nylontätning



Art.nr	A	ØD	ØB	H	
64310	M5	5	9	1,5	200
64320	R1/8	10	14	2	200
64330	R1/4	13,2	18	2	100
64340	R3/8	17	22	2	100
64350	R1/2	21,3	26,5	2	100
64355	R3/4	26,7	32,4	2	100
64360	R1	33,5	39	2	100