



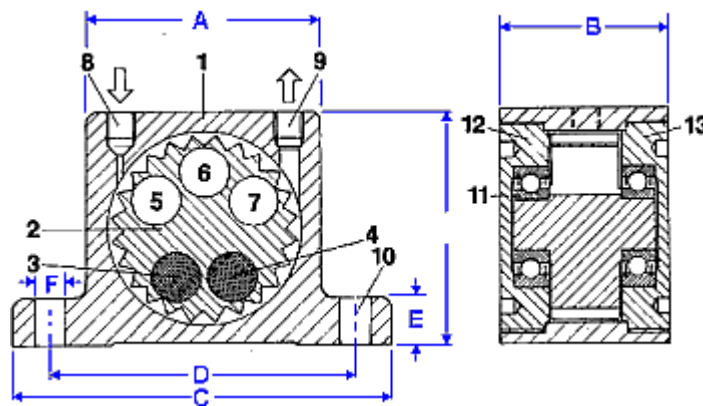
Luft, tryck och rörelse
-Kvalité för automatisering

GT-Series Turbine Vibrator



- Top-of-the-line pneumatic vibrators
- Extremely quiet
- Suitable for food and pharmaceutical industries
- No lubrication required

Specifications



Construction:

- 1 - Extruded aluminum alloy body
- 2 - Aluminum turbine wheel, hard coated
- 3-4 - High density mass for positive moment
- 5-7 - Cavities for negative moment
- 8 - Air inlet (BSP thread, will accept NPT)
- 9 - Air exhaust (BSP thread, will accept NPT)
- 10 - Base mounting holes
- 11 - Special pre-lubricated shielded bearings
- 12 - Hard coated aluminum end plate with left-handed thread
- 13 - Hard coated aluminum end plate with right-handed thread

Dimensions:

Model	A		B		C		D		E		F		G/H BSP Thread	Weight	
	mm	inches	mm	inches	mm	inches	mm	inches	mm	inches	mm	inches		kg	Lbs
GT-8 GT-10 GT-10-S	50	1.97	33	1.30	86	3.38	68	2.68	12	0.47	7	0.27	1/8"	0.250 0.255 0.263	0.55 0.56 0.58
GT13 GT-16 GT-16-S	65	2.56	42	1.65	113	4.45	90	3.54	16	0.63	9	0.35	1/4"	0.565 0.580 0.614	1.24 1.28 1.35
GT20 GT-25 GT-25-S	80	3.15	56	2.20	128	5.04	104	4.09	16	0.63	9	0.35	1/4"	1.090 1.120 1.200	2.40 2.46 2.64
GT30 GT-36 GT-36-S	100	3.94	73	2.87	160	6.30	130	5.12	20	0.79	11	0.43	3/8"	2.200 2.300 2.530	4.85 5.10 5.57
GT40 GT-48 GT-48-S	120	4.72	83	3.26	194	7.64	152	5.99	24	0.94	17	0.67	3/8"	3.690 3.890 4.290	8.13 8.57 9.45

AIRTEC Pneumatic Sweden AB

Box 120
SE-283 22 OSBY

Telefon 0479 – 126 00
Fax 0479 – 127 19

Internet www.airtec.se
E-post mail@airtec.se

Performance:

Model	Frequency V.P.M. x 1000			Centrifugal force*						Air consumption / Minute					
	2 Bar 29 PSI	4 Bar 58 PSI	6 Bar 87 PSI	2 Bar N	29 PSI LBS	4 Bar N	58 PSI LBS	6 Bar N	87 PSI LBS	2 Bar Ltr.	29 PSI CF	4 Bar Ltr.	58 PSI CF	6 Bar Ltr.	87 PSI CF
GT-8	36.0	42.0	46.0	990	223	2060	464	2910	655	46	1.6	80	2.8	112	3.9
GT-10	27.5	35.0	37.5	840	189	1390	313	2400	540						
GT-10-S	17.0	23.0	25.0	650	146	1350	304	1950	439						
GT13	26.0	30.0	33.0	1400	315	2440	549	3730	839	120	4.2	200	7.0	290	10.2
GT-16	17.0	21.5	24.0	1220	275	2090	470	3160	711						
GT-16-S	11.5	15.5	17.0	1100	248	1900	428	2700	608						
GT20	17.0	20.0	23.0	2170	488	4040	909	5520	1242	185	6.5	325	11.4	455	15.9
GT-25	12.0	15.5	17.0	2120	477	3510	790	5070	1140						
GT-25-S	8.5	11.0	13.0	2250	506	3600	810	4900	1102						
GT30	13.0	14.0	16.0	3380	760	5430	1222	7540	1696	330	11.5	530	18.5	745	26.0
GT-36	8.0	10.0	13.0	3290	740	5360	1206	7190	1618						
GT-36-S	6.1	7.2	8.3	4100	922	6200	1395	7500	1688						
GT40	7.7	8.8	9.5	4300	968	7300	1642	9800	2205	425	15.0	700	24.6	970	34.2
GT-48	6.0	7.5	9.7	4900	1102	7700	1732	10500	2363						
GT-48-S	1.8	5.6	6.3	0	0	7500	1688	12000	2700						

* Data obtained with a Kistler 3-axis dynamometer on a heavy laboratory test block and displayed by Kistler control monitor (COMO). Frequency and force will decrease on a less rigid mount. Specifications subject to change without notice or obligation.



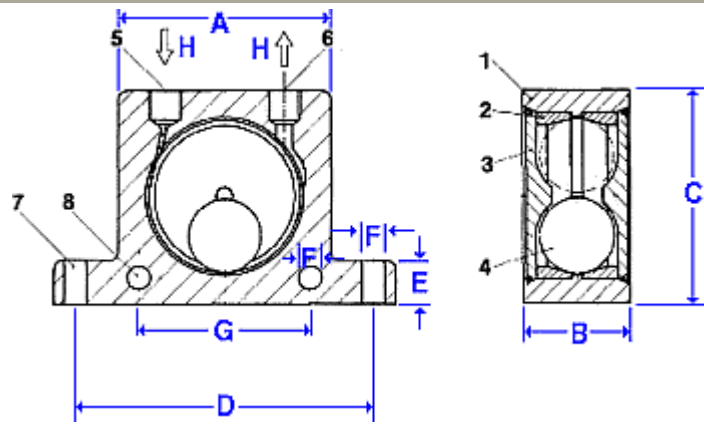
Luft, tryck och rörelse
-Kvalité för automatisering

K-Series Ball Vibrator



- Complete range to meet your needs
- Simplest version of vibrators
- Rotation frequency 7,000 to 35,000 RPM
- Centrifugal force 130 - 4,000 N

Specifications



Construction:

- 1 - Extruded aluminum alloy body
- 2 - Hardened ground steel alloy races
- 3 - Nylon endplates
- 4 - Hardened lapped ball
- 5 - Air inlet
- 6 - Air exhaust
- 7 - Base mounting holes
- 8 - Lateral mounting holes

Dimensions:

Model	A		B		C		D		E		F		G		H		Weight	
	mm	inches	mm	inches	mm	inches	mm	inches	mm	inches	mm	inches	mm	inches	BSP Thread	kg	Lbs	
K-8 K-10	50	1.97	20	0.79	86	3.38	68	2.68	12	0.47	7	0.27	40	1.57	1/4"	0.130	0.29	
K-13 K-16	65	2.56	24 27	0.94 1.06	113	4.45	90	3.54	16	0.63	9	0.35	50	1.97	1/4"	0.260 0.300	0.57 0.66	
K-20 K-25	80	3.15	33 38	1.30 1.50	128	5.04	104	4.09	16	0.63	9	0.35	60	2.36	1/4"	0.530 0.630	1.17 1.39	
K-30 K-36	100	3.94	44 50	1.73 1.97	160	6.30	130	5.12	20	0.79	11	0.43	80	3.15	3/8"	1.130 1.340	2.49 2.95	

AIRTEC Pneumatic Sweden AB
Box 120
SE-283 22 OSBY

Telefon 0479 – 126 00
Fax 0479 – 127 19

Internet www.airtec.se
E-post mail@airtec.se

Performance:

Model	Frequency V.P.M. x 1000			Centrifugal force*						Air consumption / Minute					
	2 Bar 29 PSI	4 Bar 58 PSI	6 Bar 87 PSI	2 Bar N	29 PSI LBS	4 Bar N	58 PSI LBS	6 Bar N	87 PSI LBS	2 Bar Ltr.	29 PSI CF	4 Bar Ltr.	58 PSI CF	6 Bar Ltr.	87 PSI CF
K-8	25.5	31.0	35.0	130	29	260	58	360	81	83	2.9	145	5.1	195	6.9
K-10	22.5	28.0	34.0	250	26	470	106	710	160	92	3.2	150	5.3	200	7.1
K-13	15.0	18.5	22.5	320	72	550	124	870	196	94	3.3	158	5.6	225	7.9
K-16	13.0	17.0	19.5	450	101	800	180	1.100	248	122	4.3	200	7.1	280	9.9
K-20	10.5	14.5	16.5	720	162	1.220	275	1.720	387	130	4.6	230	8.1	340	12.0
K-25	9.2	12.2	14.0	930	209	1.570	353	2.050	461	160	5.6	290	10.2	425	15.0
K-30	7.8	9.7	12.5	1.510	340	2.470	556	3.210	722	215	7.6	375	13.2	570	20.0
K-36	7.3	9.0	10.0	2.060	464	3.150	709	4.050	911	260	9.2	475	16.8	675	24.0

* Data obtained with a Kistler 3-axis dynamometer on a heavy laboratory test block and displayed by Kistler control monitor (COMO). Frequency and force will decrease on a less rigid mount. Specifications subject to change without notice or obligation.



Luft, tryck och rörelse
-Kvalité för automatisering

FP-Series Piston Vibrator



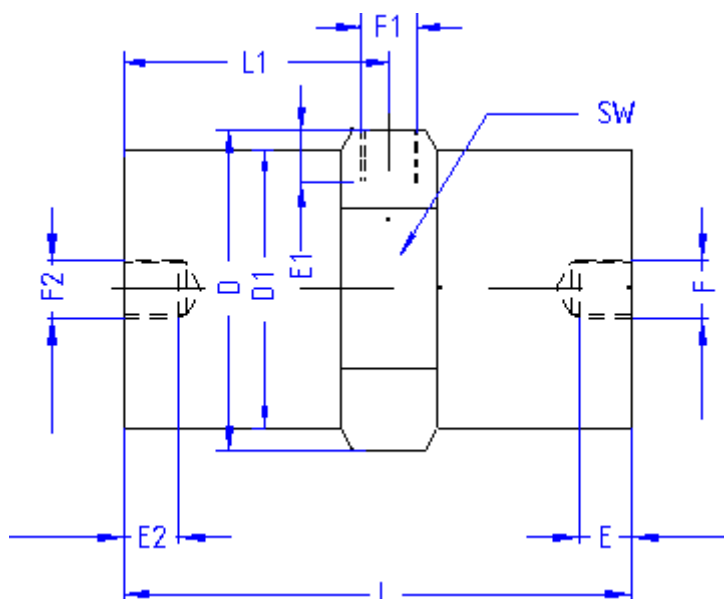
- Aluminum body - anodized for better corrosion resistance
- Operates in any position
- Low noise level (60 to 70 dBA)
- Adjustable to meet your application needs
- Low air consumption
- Low maintenance

Construction:

- 1 - Hard anodised aluminum alloy body
- 2 - Leaded bronze piston
- 3 - Starter spring
- 4 - Air inlet
- 5 - Sound absorbing exhaust system
- 6 - Hard anodised aluminum alloy socket
- 7 - Threaded base for mounting
- 8 - Hard anodised aluminum alloy end cap
- 9 - Air outlet



Specifications / FP-12 to FP-35
Available in Small, Medium & Large amplitudes

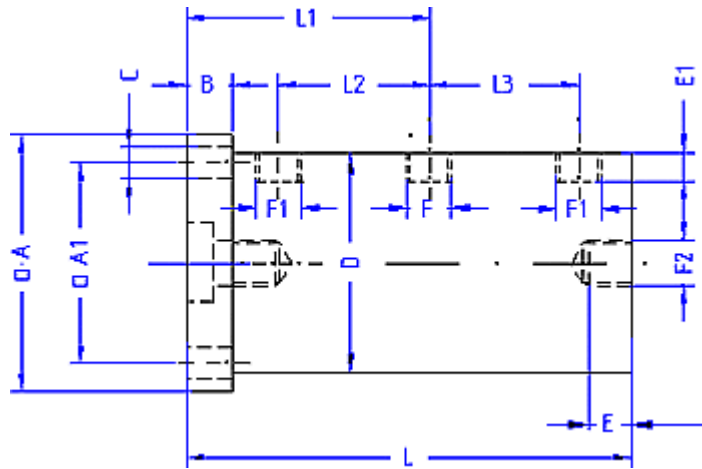


Dimensions in mm:

Model	D	D1	L	L1	E	E1	E2	F	F1	F2	SW
FP-12-S	37	31	71	33.5	11	7	11	G 1/8"	G 1/8"	M 8	34
FP-12-M			81	40.5							
FP-12-L			94	47.0							
FP-18-S	45	40	81	40.5	11	7	13	G 1/8"	G 1/8"	M 10	42
FP-18-M			94	47.0							
FP-18-L			109	54.5							
FP-25-S	53.5	48	98	41.5	11	7	15	G 1/8"	G 1/8"	M 12	50
FP-25-M			116	60.5							
FP-25-L			136	70.5							
FP-35-S	69	58	98	41.5	11	9	15	G 1/4"	G 1/4"	M 12	65
FP-35-M			116	60.5							
FP-35-L			136	70.5							

Model	Weight of Body		Weight of Piston		Total Weight	
	kg	Lbs	kg	Lbs	kg	Lbs
FP-12-S	0.125	0.275	0.020	0.045	0.145	0.320
FP-12-M	0.140	0.309	0.030	0.066	0.170	0.375
FP-12-L	0.165	0.360	0.040	0.090	0.205	0.450
FP-18-S	0.220	0.485	0.060	0.135	0.280	0.620
FP-18-M	0.260	0.575	0.080	0.175	0.340	0.750
FP-18-L	0.300	0.660	0.110	0.240	0.410	0.900
FP-25-S	0.375	0.825	0.155	0.345	0.530	1.170
FP-25-M	0.435	0.955	0.215	0.475	0.650	1.430
FP-25-L	0.500	1.100	0.290	0.640	0.790	1.740
FP-35-S	0.530	1.170	0.315	0.690	0.845	1.860
FP-35-M	0.610	1.345	0.430	0.950	1.040	2.290
FP-35-L	0.700	1.540	0.580	1.280	1.280	2.820

Specifications / FP-50 to FP-95



Dimensions in mm:

Model	A	A1	B	C	D	E	E1
FP-50-M	90	72	20	8.8	84	13	10
FP-60-M	110	90	20	8.8	94	13	10
FP-95-M	150	124	19	13	140		10

Model	F	F1	F2	L	L1	L2	L3	Housing kg	Piston kg	Total kg
FP-50-M	G1/4"	G1/4"	G1/4"	154	78.5	41.5	41.5	1.350	1.500	3.250
FP-60-M	G1/4"	G3/8"	G1/4"	154	78.5	41.5	41.5	1.520	2.150	4.250
FP-95-M	G3/8"	G3/8"		156	77.5	35.0	35.0	2.600	4.900	9.400

Performance:

Model	Frequency V.P.M. x 1000			Linear force measured					
	2 Bar 29 PSI	4 Bar 58 PSI	6 Bar 87 PSI	2 Bar N	29 PSI LBS	4 Bar N	58 PSI LBS	6 Bar N	87 PSI LBS
FP-12-S	6.2	7.8	9.3	34	7.7	70	16	92	21
FP-12-M	5.0	6.0	6.7	34	7.7	58	13	74	17
FP-12-L	4.0	4.8	5.4	32	7.2	58	13	81	18
FP-18-S	5.0	6.4	7.7	66	15.0	134	30	187	42
FP-18-M	4.0	5.0	5.9	68	15.0	134	30	188	42
FP-18-L	3.1	4.0	4.6	64	14.0	150	34	206	46
FP-25-S	3.6	4.3	5.5	126	28	270	61	416	94
FP-25-M	3.0	3.8	4.2	142	32	364	82	504	113
FP-25-L	2.4	3.1	3.7	186	42	392	88	594	134
FP-35-S	3.8	4.7	5.8	294	66	668	150	1.038	234
FP-35-M	3.0	4.0	4.6	248	56	778	175	1.080	243
FP-35-L	2.4	3.1	3.6	282	63	680	153	1.066	240
FP-50-M	1.85	2.3	2.8	490	110	970	218	1600	360
FP-60-M	1.95	2.4	2.7	610	137	1400	315	2170	489
FP-95-M	1.8	2.4	2.8	1500	338	2620	590	4270	962

Model	Air consumption / Minute						Notice level	
	2 Bar Ltr.	29 PSI CF	4 Bar Ltr.	58 PSI CF	6 Bar Ltr.	87 PSI CF	dBA*	dBA**
FP-12-S	0.8	0.03	7.5	0.26	25	0.88	57-61	
FP-12-M	0.5	0.02	4.0	0.14	19	0.67	57-61	
FP-12-L	1.0	0.04	3.0	0.11	20	0.71	58-60	
FP-18-S	5.0	0.18	33.0	1.16	57	2.00	62-71	
FP-18-M	4.0	0.14	28.0	1.00	52	1.84	61-67	
FP-18-L	5.0	0.18	23.0	0.81	46	1.62	61-68	
FP-25-S	13	0.46	54	1.91	93	3.28	70-75	61-67
FP-25-M	23	0.81	50	1.76	87	3.07	73-75	62-66
FP-25-L	18	0.64	62	2.19	93	3.28	72-75	60-65
FP-35-S	23	0.81	101	3.56	162	5.72	72-77	71-73
FP-35-M	24	0.85	83	2.93	141	4.98	74-78	70-73
FP-35-L	38	1.34	89	3.14	135	4.77	74-80	68-74
FP-50-M	48	1.67	100	3.48	190	6.61	70-77	
FP-60-M	90	3.13	160	5.57	270	9.39	73-79	
FP-95-M	170	5.91	320	11.13	450	15.65	85-92	

* Data obtained with a Kistler 3-axis dynamometer on a heavy laboratory test block and displayed by Kistler control monitor (COMO). Frequency and force will decrease on a less rigid mount. Specifications subject to change without notice or obligation.