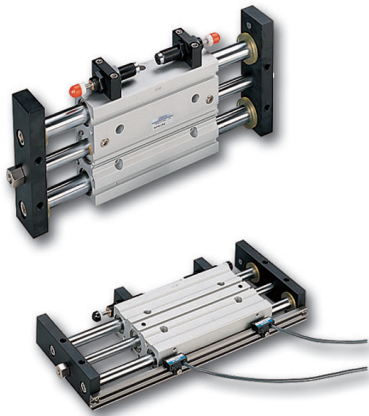


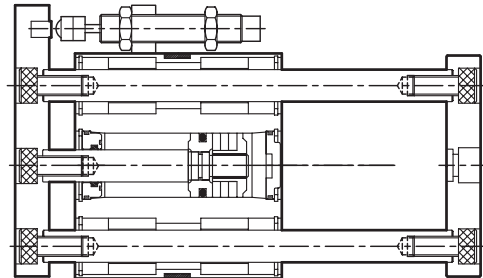


STG(U), TX(U) SERIES TWIN-GUIDE SLIDE TABLE CYLINDER

Operating specification



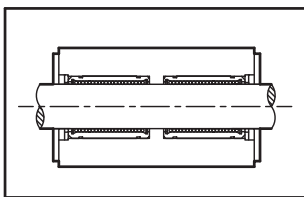
Internal structure STG, TX



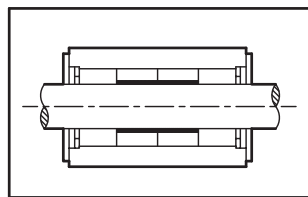
Specification

Item	Bore size (mm)	10	16	20	25	32	40	50	63
Operation		Double acting							
Fluid		Air							
Pressure range	Kgf/cm ² (kpa)	1.5~7(150~700)							
Max.service pressure	Kgf/cm ² (kpa)	9.5(950)							
Range of service temperature	°C	0~60							
Range of service speed	mm/sec	30~500						30~350	
Lubrication		Lubrication free							
Connection port		M5×0.8				Rc 1/8		Rc 1/4	

Guide type

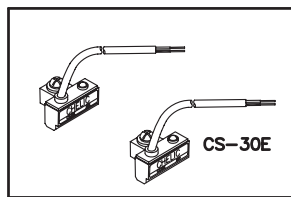


Linear bearing guide(-U)

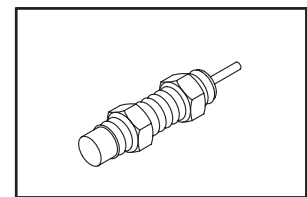


Bush guide (-B)

Sensor(Optional)



Sensor **CS-30E** Refer to P.7-2.4 JD Series.



Shock absorber(Optional)

Standard stroke length list

● STG, STGU

Unit:mm

Bore size(mm)	Standard stroke
ø10	25 · 50 · 75 · 100
ø16	25 · 50 · 75 · 100 · 125 · 150 · 175 · 200 · (250)
ø20	25 · 50 · 75 · 100 · 125 · 150 · 175 · 200 · (250)
ø25	25 · 50 · 75 · 100 · 125 · 150 · 175 · 200 · (250)
ø32	30 · 50 · 75 · 100 · 125 · 150 · 175 · 200 · 250
ø40	30 · 50 · 75 · 100 · 125 · 150 · 175 · 200 · 250
ø50	30 · 50 · 75 · 100 · 125 · 150
ø63	30 · 50 · 75 · 100 · 125 · 150

● TX, TXU

Unit:mm

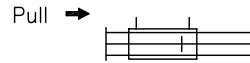
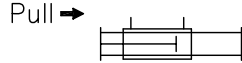
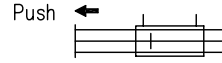
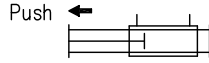
Bore size(mm)	Standard stroke
ø16	50 · 75 · 100 · 125 · 150
ø20	50 · 75 · 100 · 125 · 150
ø25	50 · 75 · 100 · 125 · 150
ø32	50 · 75 · 100 · 125 · 150 · 175 · 200 · 250
ø40	50 · 75 · 100 · 125 · 150 · 175 · 200 · 250
ø50	50 · 75 · 100 · 125 · 150
ø63	50 · 75 · 100 · 125 · 150



STG(U), TX(U) SERIES TWIN-GUIDE SLIDE TABLE CYLINDER

Ordering guide

Theoretical thrust table



● STG

● TX

Unit :kgf

Bore size mm	Piston rod mm	Acting	Piston area cm ²	Air pressure (kgf/cm ²)						
				1	2	3	4	5	6	7
10	6	Push	0.79	—	1.6	2.4	3.2	4.0	4.7	5.5
		Pull	0.32	—	0.6	1	1.3	1.6	1.9	2.2
16	8	Push	2.01	—	4	6	8	10.1	12.1	14.1
		Pull	1.51	—	3	4.5	6	7.6	9.1	10.6
20	10	Push	3.14	—	6	9	12	15	18	21
		Pull	2.35	—	4.7	7.1	9.4	11.8	14.1	16.5
25	12	Push	4.90	—	9	14	19	24	29	34
		Pull	3.77	—	7.5	11.3	15.1	18.9	22.6	26.3
32	16	Push	8.04	—	16	24	32	40	48	55
		Pull	6.03	—	12.1	18.1	24.1	30.2	36.2	42.2
40	16	Push	12.56	12	25	37	50	62	75	87
		Pull	10.55	10	21	31	42	52	63	73
50	20	Push	19.63	19	39	58	78	98	117	137
		Pull	16.49	16	32	49	65	82	98	115
63	20	Push	31.17	31	62	93	124	155	187	218
		Pull	28.03	28	56	84	112	140	168	196

Note: 1. The above data are for reference only. When come to actual practice, frictional force and the mechanical efficiency have to be taken into consideration.
2. The force applied to TXB(U) series is pulling force.

How to order

STG	U	32	×	100
Model	Guide type	Bore size		Stroke
		10- ø10mm 16- ø16mm 20- ø20mm 25- ø25mm 32- ø32mm 40- ø40mm 50- ø50mm 63- ø63mm		25- 25mm 50- 50mm 75- 75mm 100- 100mm 125- 125mm 150- 150mm 175- 175mm 200- 200mm 250- 250mm

How to select shock absorbers.

Bore size	Shock absorber	Max.absorb function
10	SAC-1008	0.15 Kgf.m
16	SAC-1008	0.15 Kgf.m
20	SAC-1210	0.6 Kgf.m
25	SAC-1210	0.6 Kgf.m
32	SAC-1408	2.1 Kgf.m
40	SAC-1408	2.1 Kgf.m
50	SAC-2020	4.5 Kgf.m
63	SAC-2020	4.5 Kgf.m

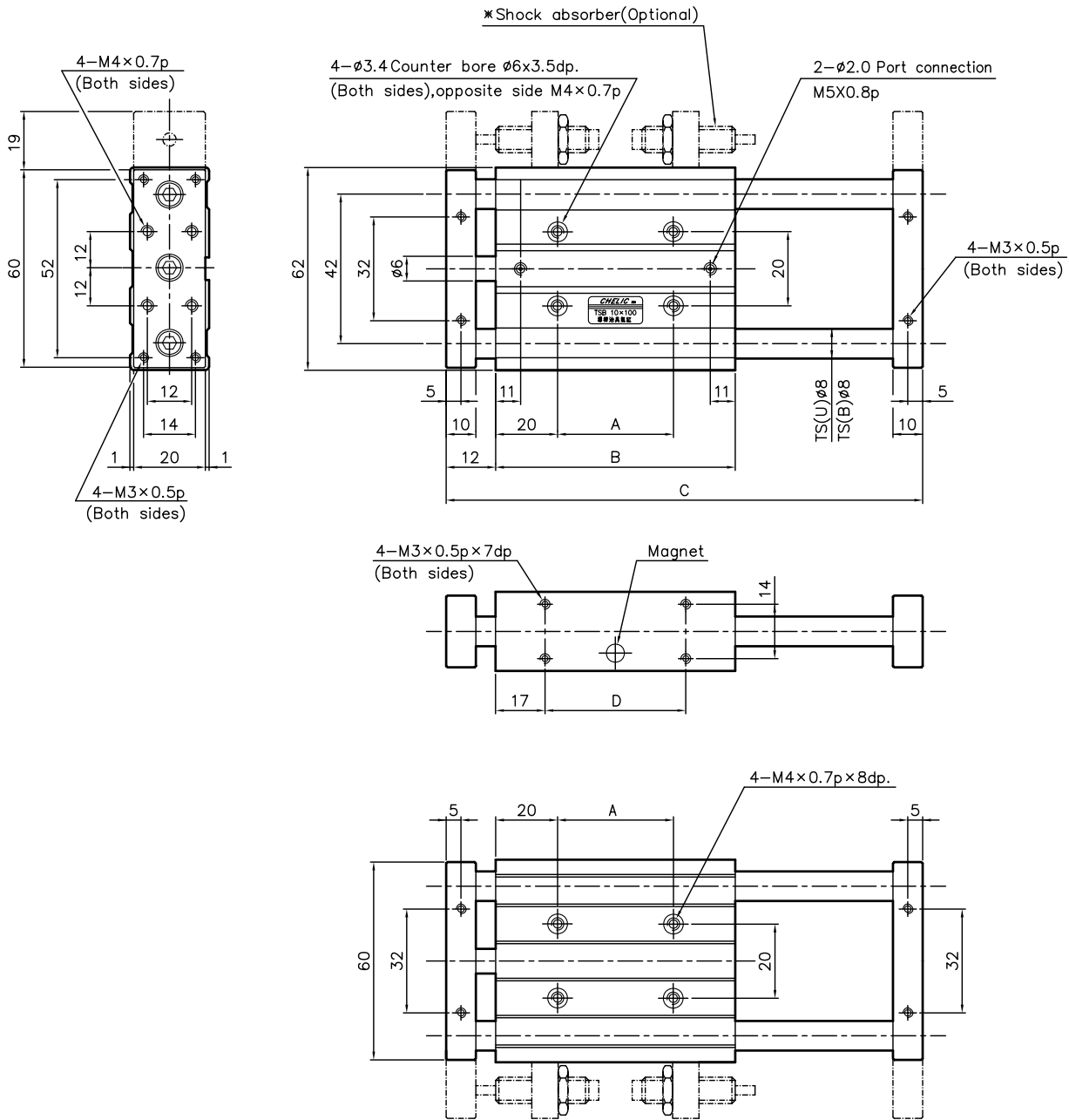
Remark: Shock absorber is mounted on the side of body so as to absorb the impact force. (Please indicate **AM** **Code number**)



STG(U) SERIES TWIN-GUIDE SLIDE UNIT CYLINDER

External Dimensions

● STG(U) Ø10



● Dimensional table

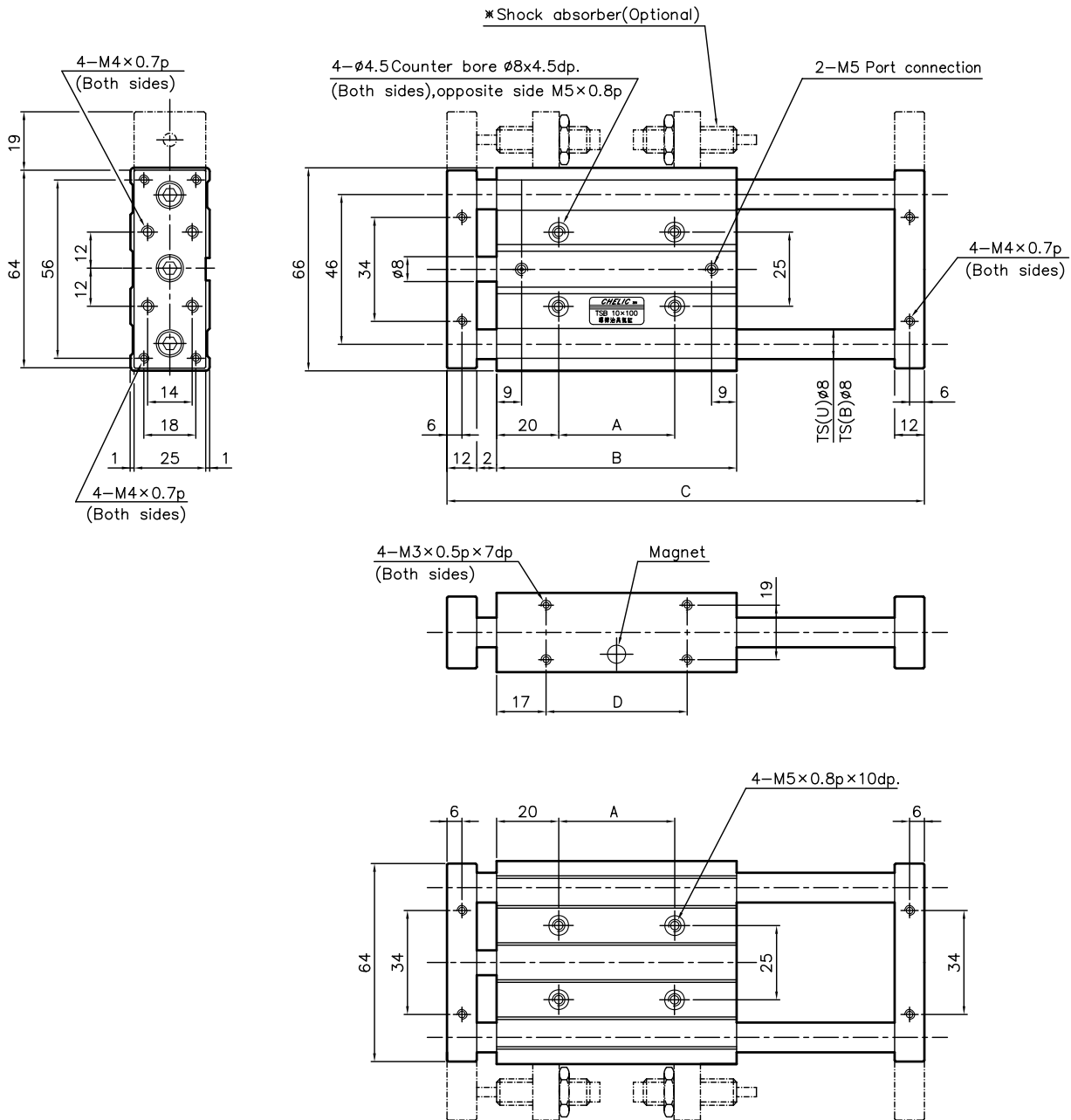
Stroke Code	25	50	75	100
A	30	55	80	105
B	70	95	120	145
C	119	169	219	269
D	36	61	86	111



STG(U) SERIES TWIN-GUIDE SLIDE UNIT CYLINDER

External Dimensions

● STG(U) Ø16



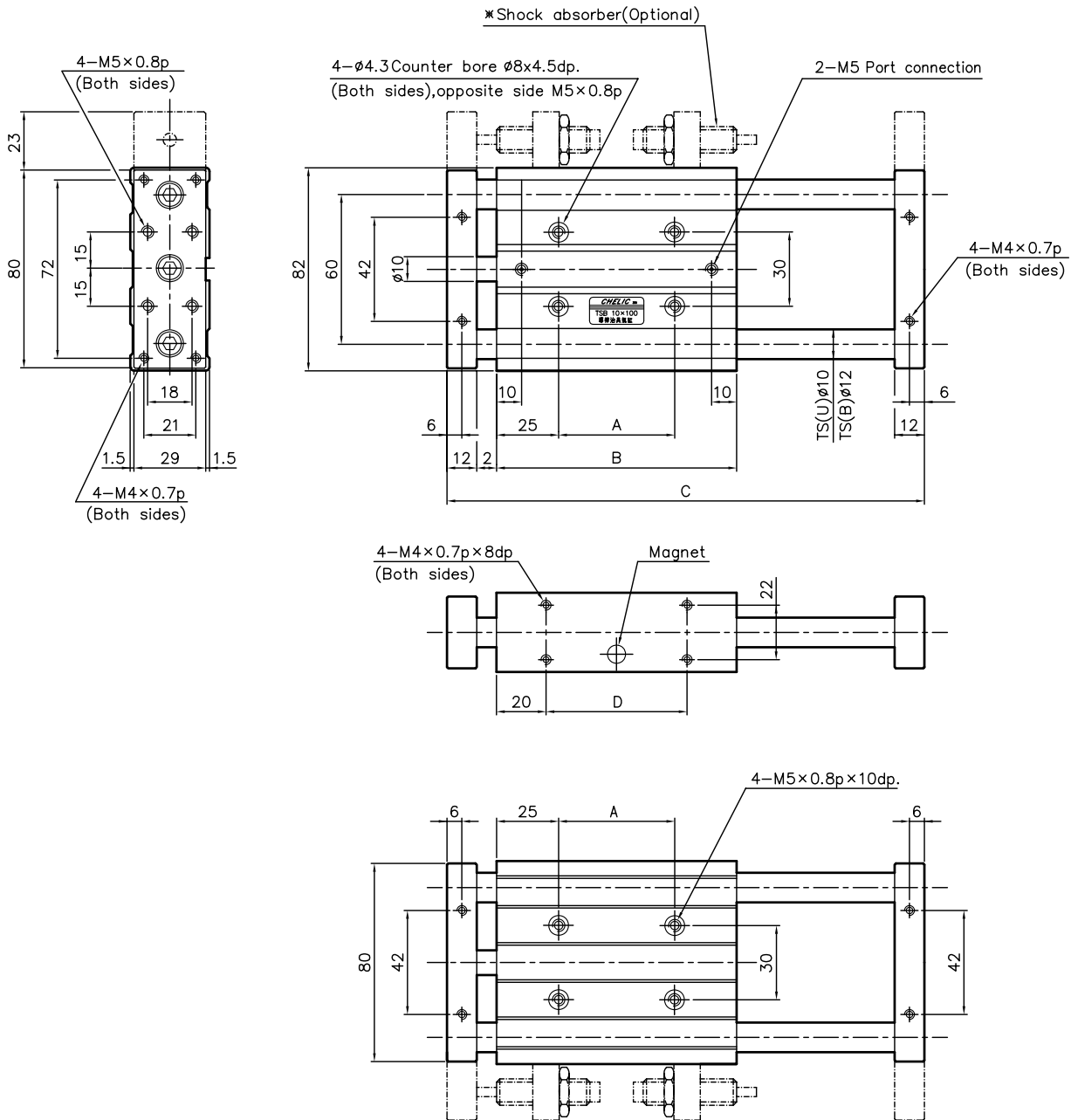
● Dimensional table

Stroke Code	25	50	75	100	125	150	175	200
A	30	55	80	105	130	155	180	205
B	70	95	120	145	170	195	220	245
C	123	173	223	273	323	373	423	473
D	36	61	86	111	136	161	186	211

STG(U) SERIES TWIN-GUIDE SLIDE UNIT CYLINDER

External Dimensions

● STG(U) Ø20



● Dimensional table

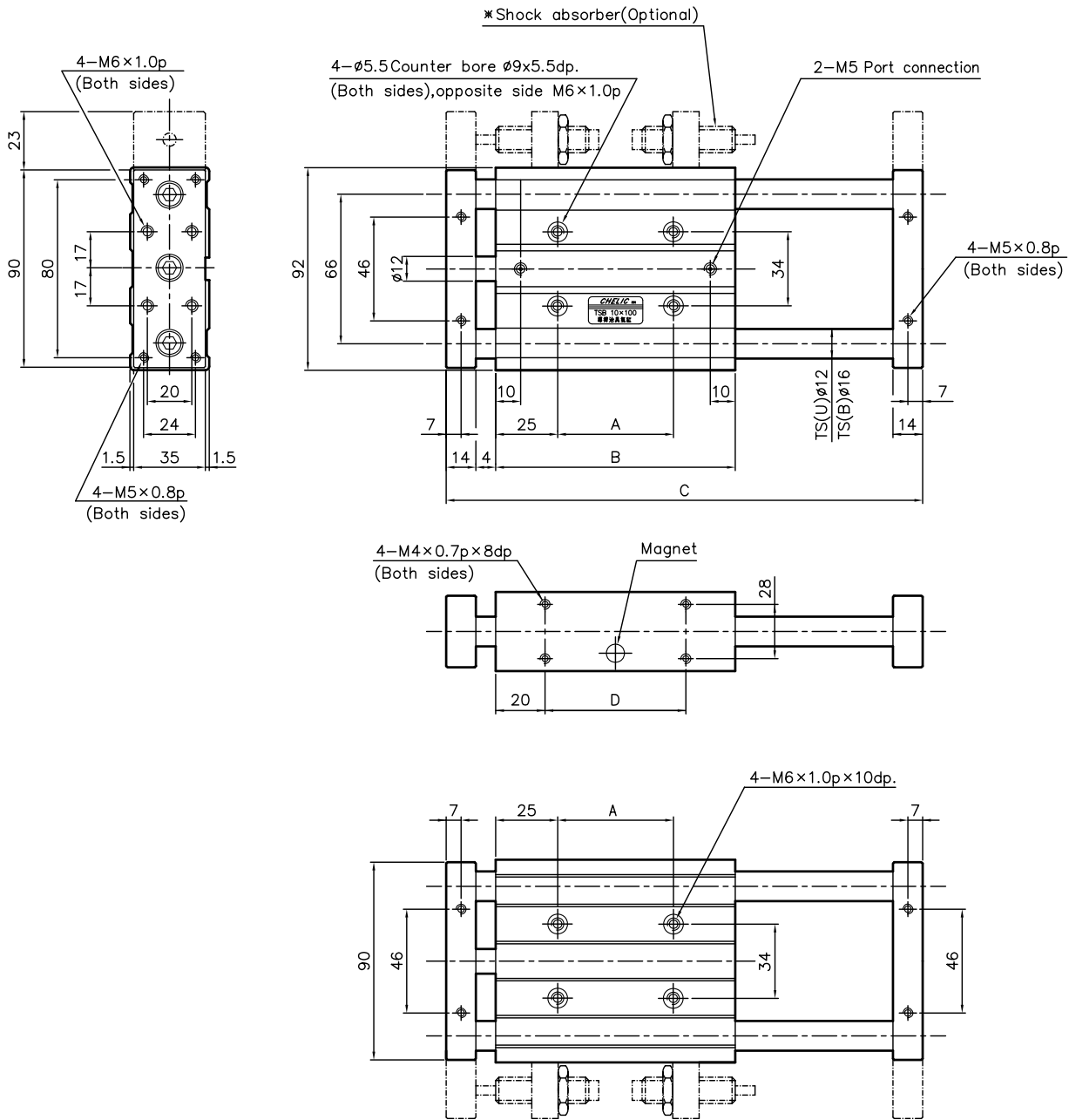
Stroke Code	25	50	75	100	125	150	175	200
A	22	47	72	97	122	147	172	197
B	72	97	122	147	172	197	222	247
C	125	175	225	275	325	375	425	475
D	32	57	82	107	132	157	182	207



STG(U) SERIES TWIN-GUIDE SLIDE UNIT CYLINDER

External Dimensions

● STG(U) Ø25



● Dimensional table

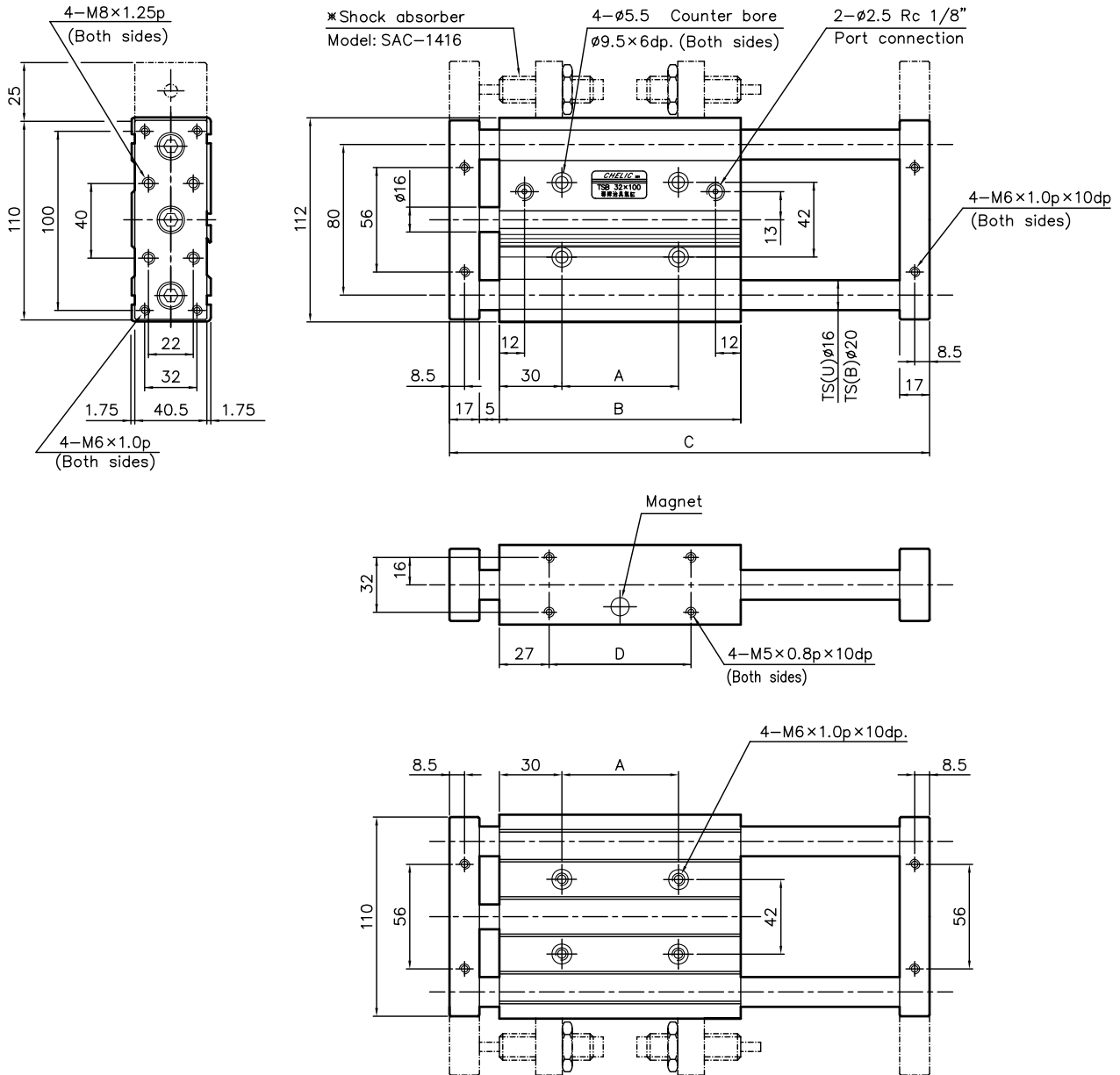
Stroke Code	25	50	75	100	125	150	175	200
A	23	48	73	98	123	148	173	198
B	73	98	123	148	173	198	223	248
C	134	184	234	284	334	384	434	484
D	33	58	83	108	133	158	183	208



STG(U) SERIES TWIN GUIDE SLIDE UNIT UNIT CYLINDER

External Dimensions

● STG(U) Ø32



● Dimensional table

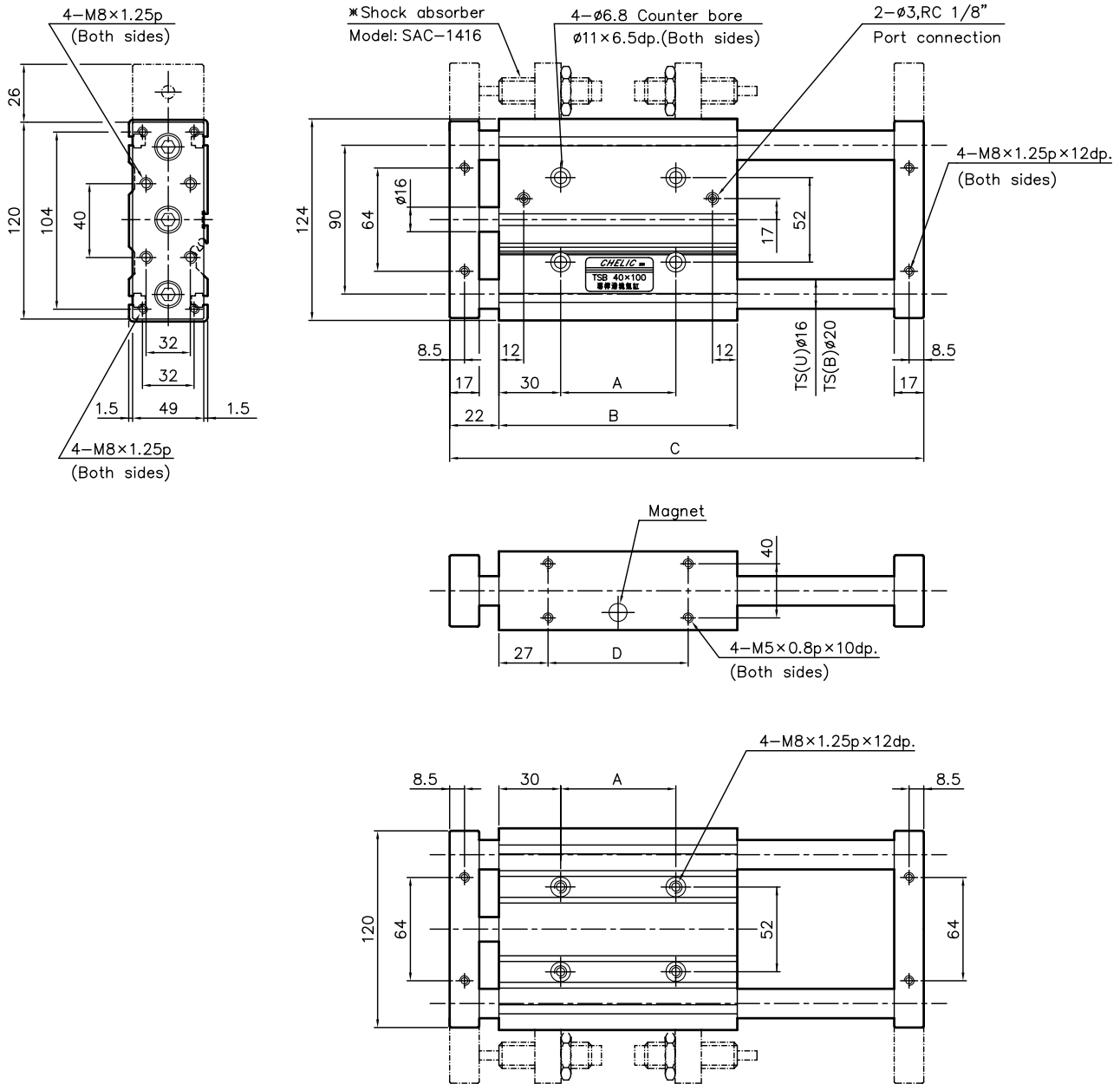
Stroke Code	30	50	75	100	125	150	175	200	250
A	23	43	68	93	118	143	168	193	243
B	83	103	128	153	178	203	228	253	303
C	157	197	247	297	347	397	447	497	597
D	29	49	74	99	124	149	174	199	249



STG(U) SERIES TWIN-GUIDE SLIDE UNIT CYLINDER

External Dimensions

● STG(U) Ø40



● Dimensional table

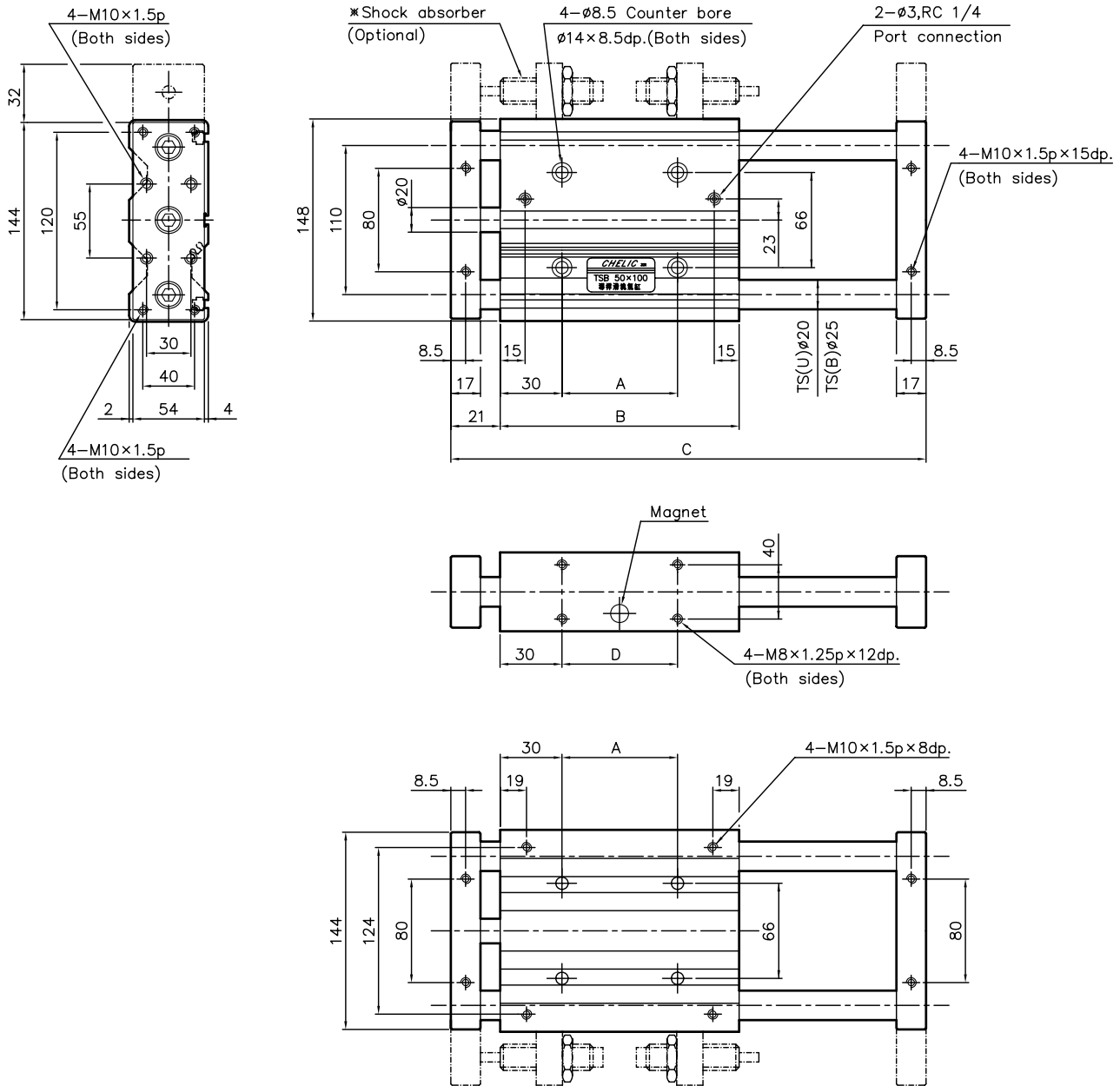
Stroke Code	30	50	75	100	125	150	175	200	250
A	23	43	68	93	118	143	168	193	243
B	83	103	128	153	178	203	228	253	303
C	157	197	247	297	347	397	447	497	597
D	29	49	74	99	124	149	174	199	249



STG(U) SERIES TWIN-GUIDE SLIDE UNIT CYLINDER

External Dimensions

● STG(U) Ø50



● Dimensional table

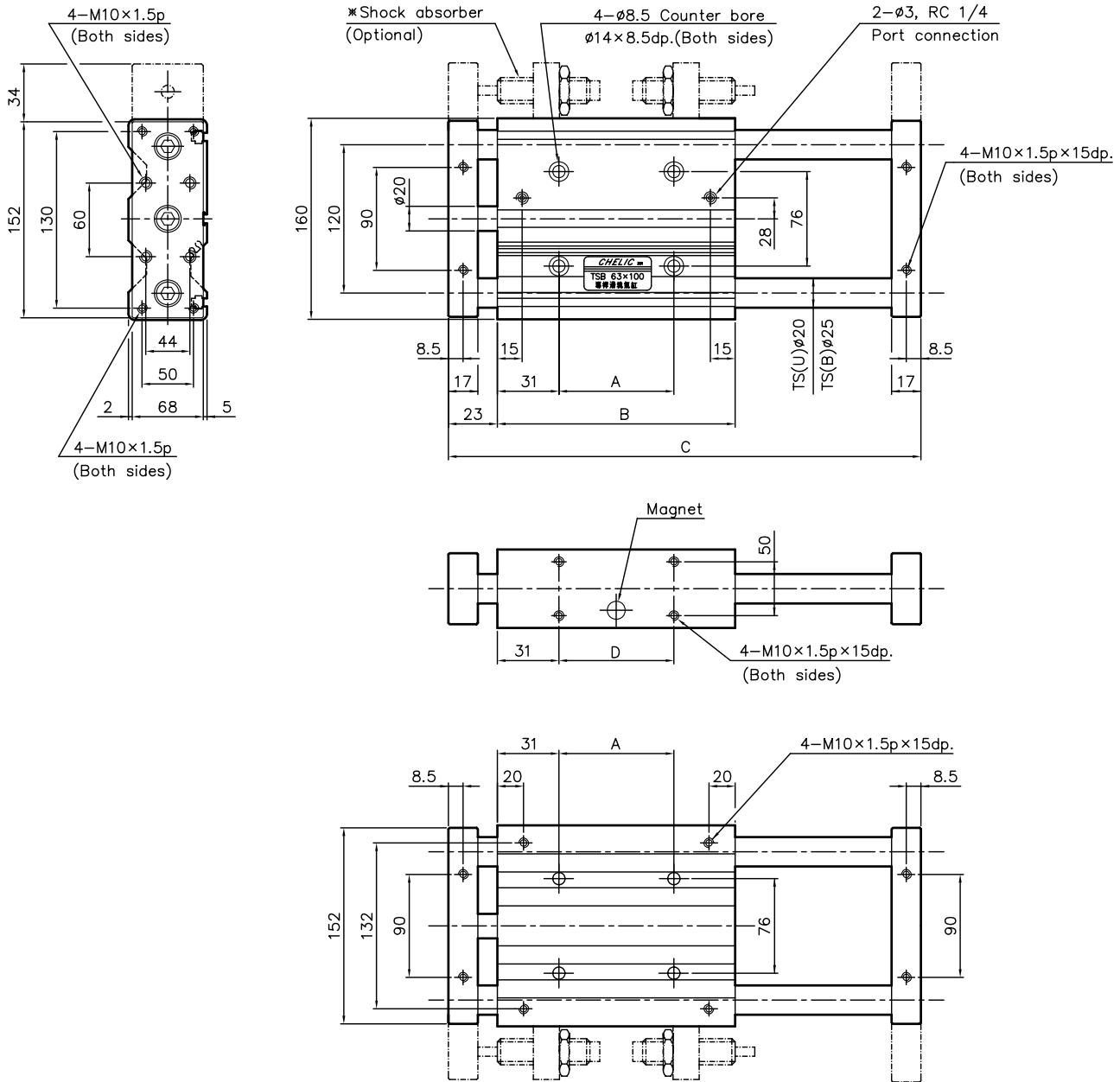
Stroke Code	30	50	75	100	125	150
A	18	38	63	88	113	138
B	78	98	123	148	173	198
C	154	194	244	294	344	394
D	18	38	63	88	113	138



STG(U) SERIES TWIN GUIDE SLIDE UNIT CYLINDER

External Dimensions

● STG(U) Ø63



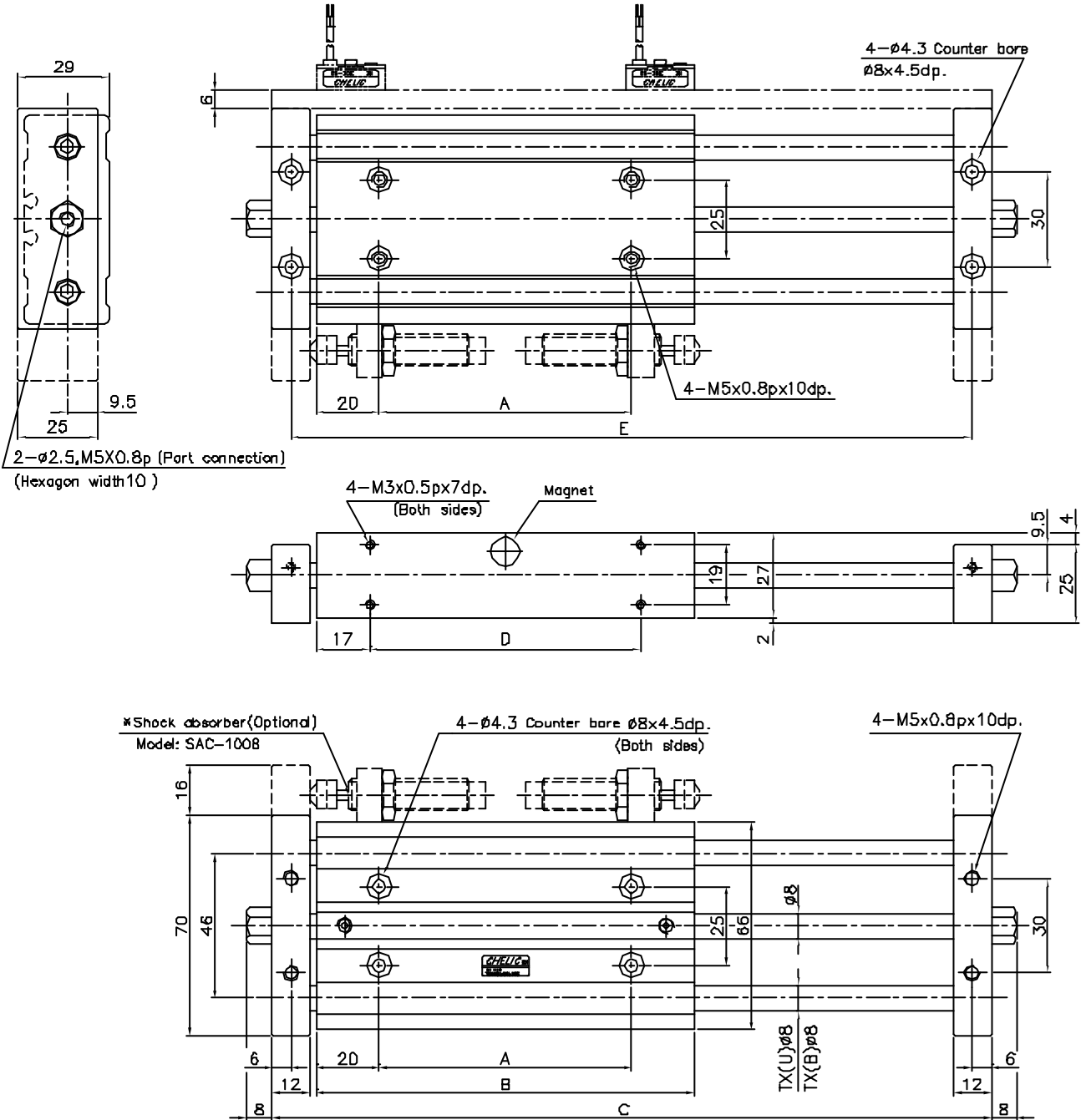
● Dimensional table

Stroke Code	30	50	75	100	125	150
A	18	38	63	88	113	138
B	80	100	125	150	175	200
C	156	196	246	296	346	396
D	18	38	63	88	113	138

TX(U) SERIES TWIN GUIDE SLIDE TABLE

External Dimensions

● TX(U) Ø16



◆ Dimensional table

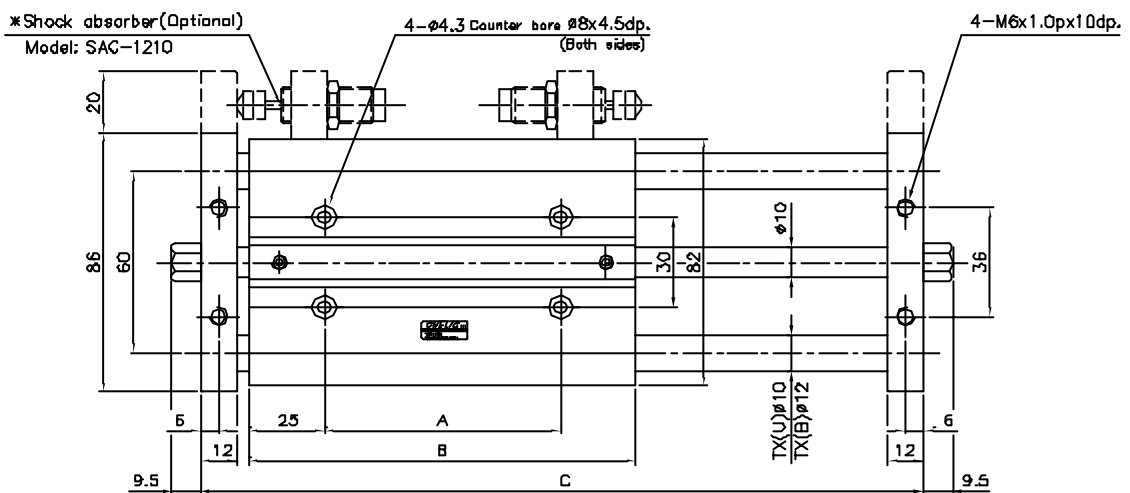
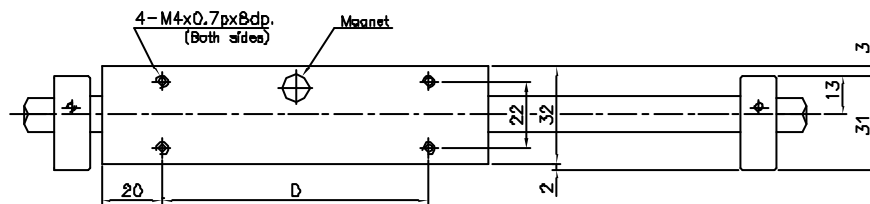
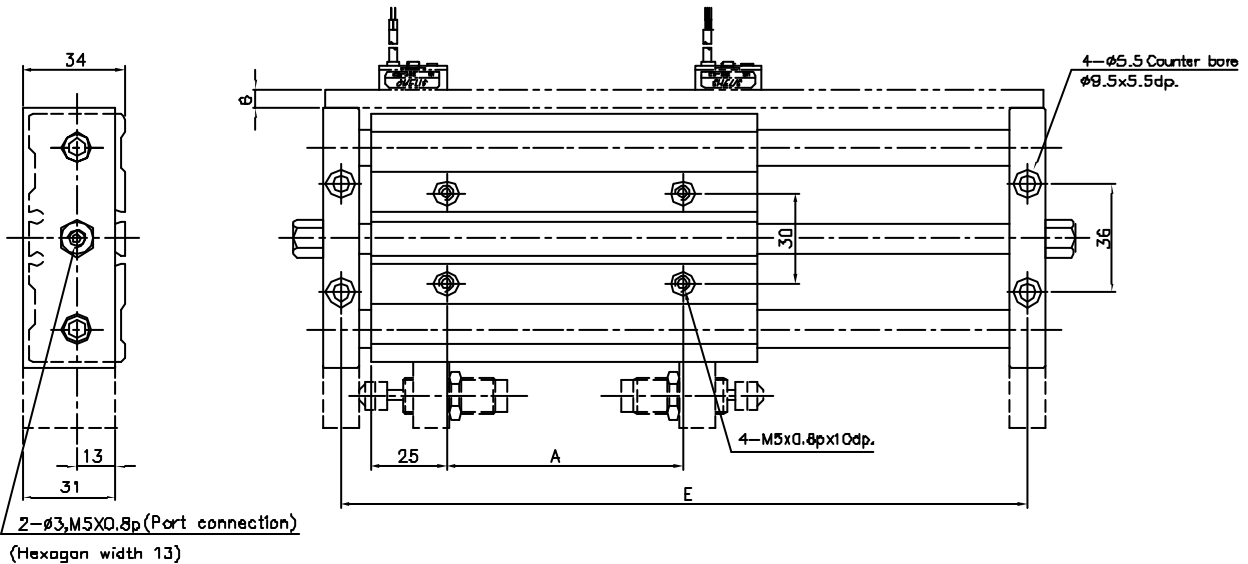
Stroke Code	50	75	100	125	150
A	55	80	105	130	155
B	95	120	145	170	195
C	173	223	273	323	373
D	61	86	111	136	161
E	161	211	261	311	361



TX(U) SERIES TWIN GUIDE SLIDE TABLE

External Dimensions

◆ TX(U) Ø20



● Dimensional table

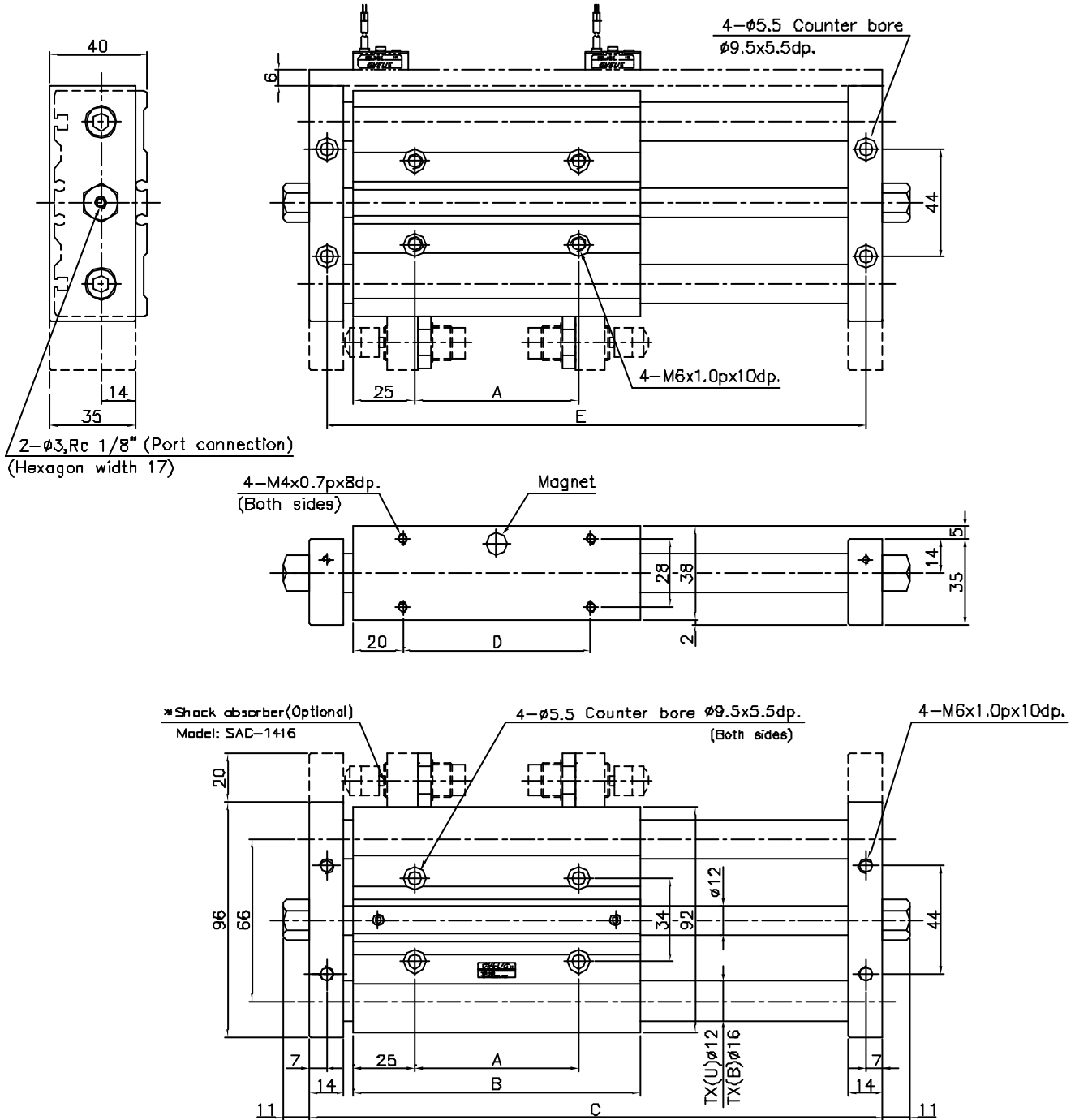
Stroke Code	50	75	100	125	150
A	47	72	97	122	147
B	97	122	147	172	197
C	175	225	275	325	375
D	57	82	107	132	157
E	163	213	263	313	363



TX(U) SERIES TWIN GUIDE SLIDE TABLE

External Dimensions

● TX(U) Ø25



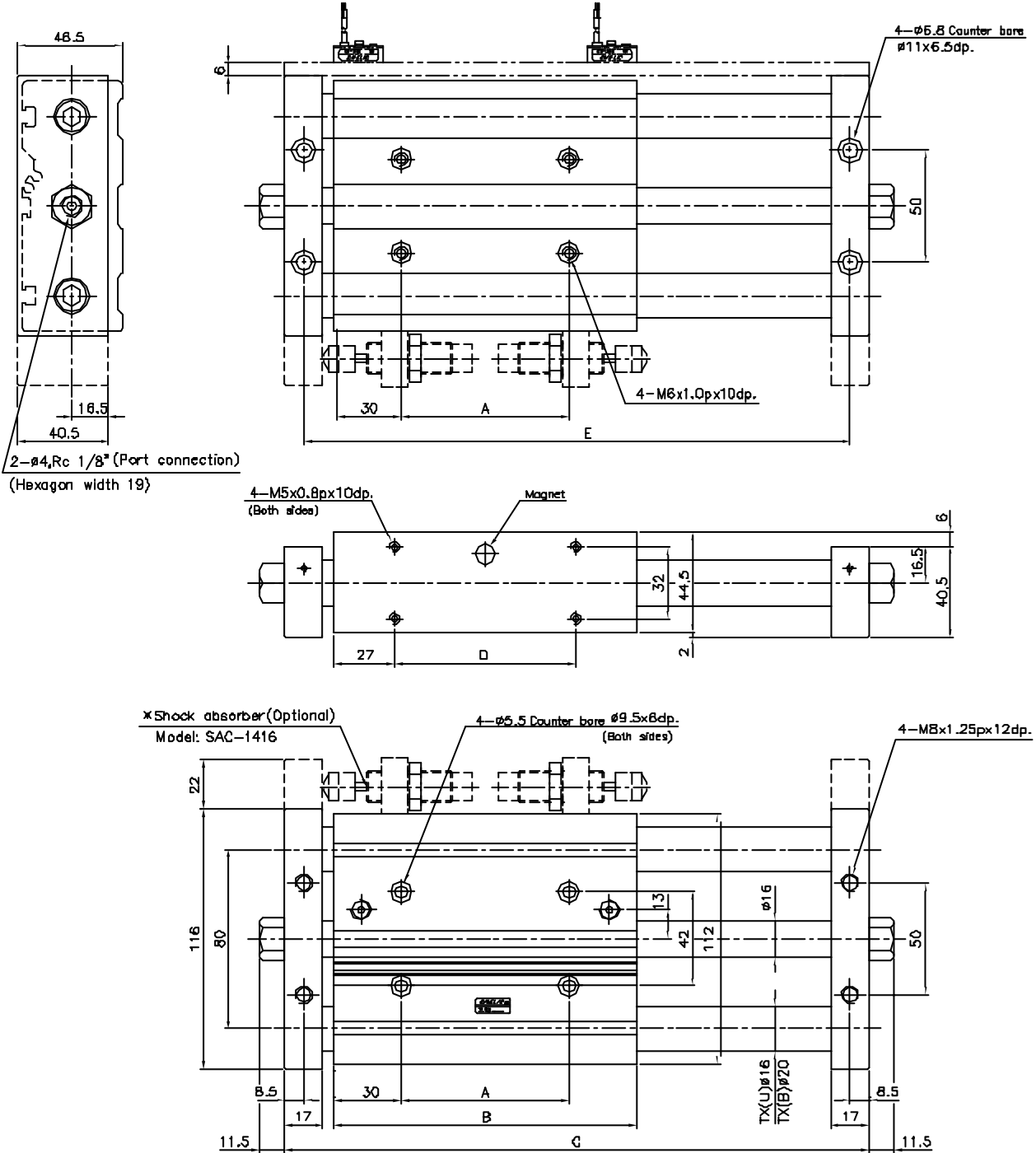
● Dimensional table

Stroke Code	50	75	100	125	150
A	48	73	98	123	148
B	98	123	148	173	198
C	184	234	284	334	384
D	58	83	108	133	158
E	170	220	270	320	370

TX(U) SERIES TWIN GUIDE SLIDE TABLE

External Dimensions

● TX(U) Ø32



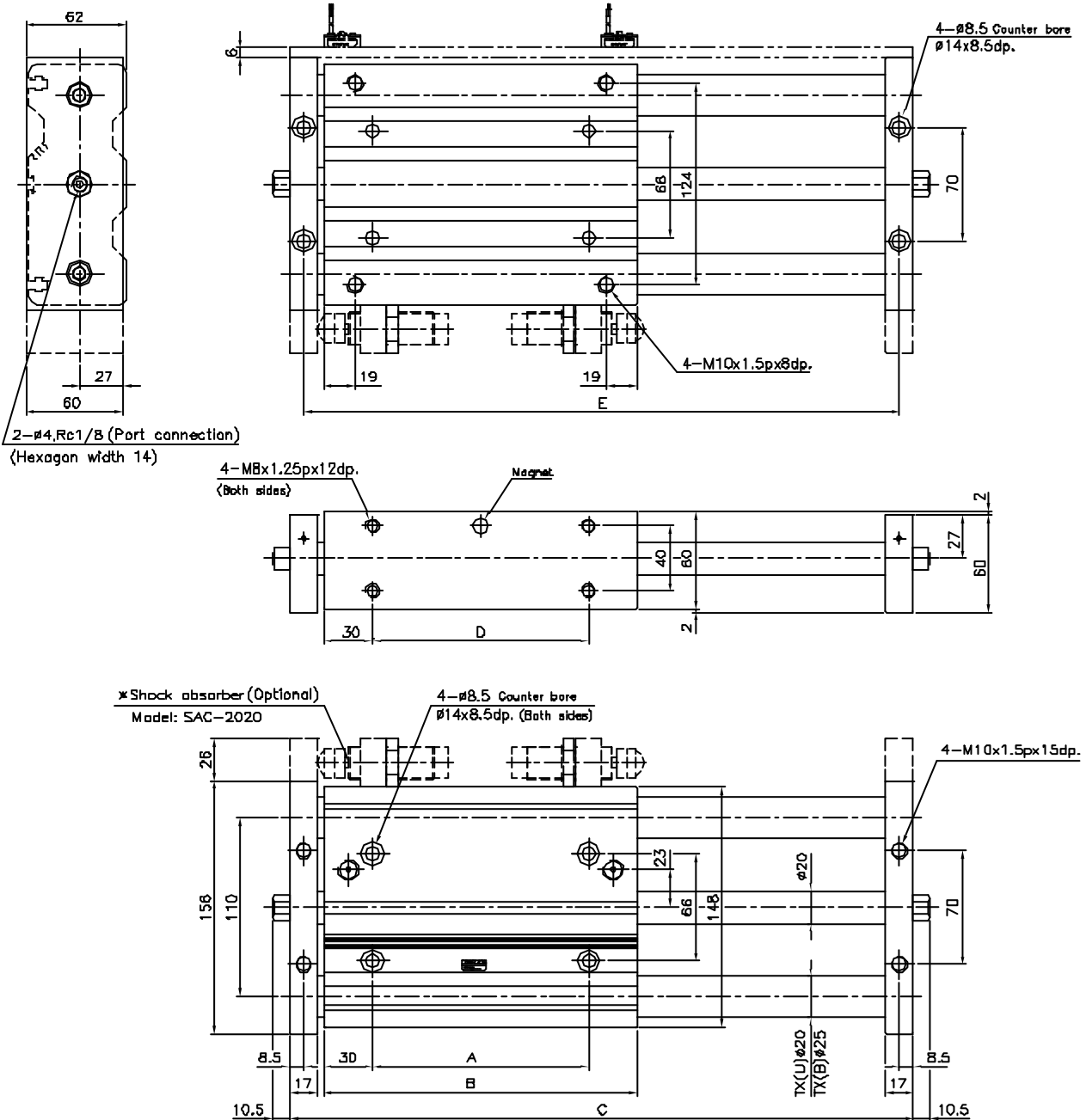
● Dimensional table

Stroke Code	50	75	100	125	150	175	200	250
A	43	68	93	118	143	168	193	243
B	103	128	153	178	203	228	253	303
C	197	247	297	347	397	447	497	597
D	49	74	99	124	149	174	199	249
E	180	230	280	330	380	430	480	580

TX(U) SERIES TWIN GUIDE SLIDE TABLE

External Dimensions

● TX(U) Ø50



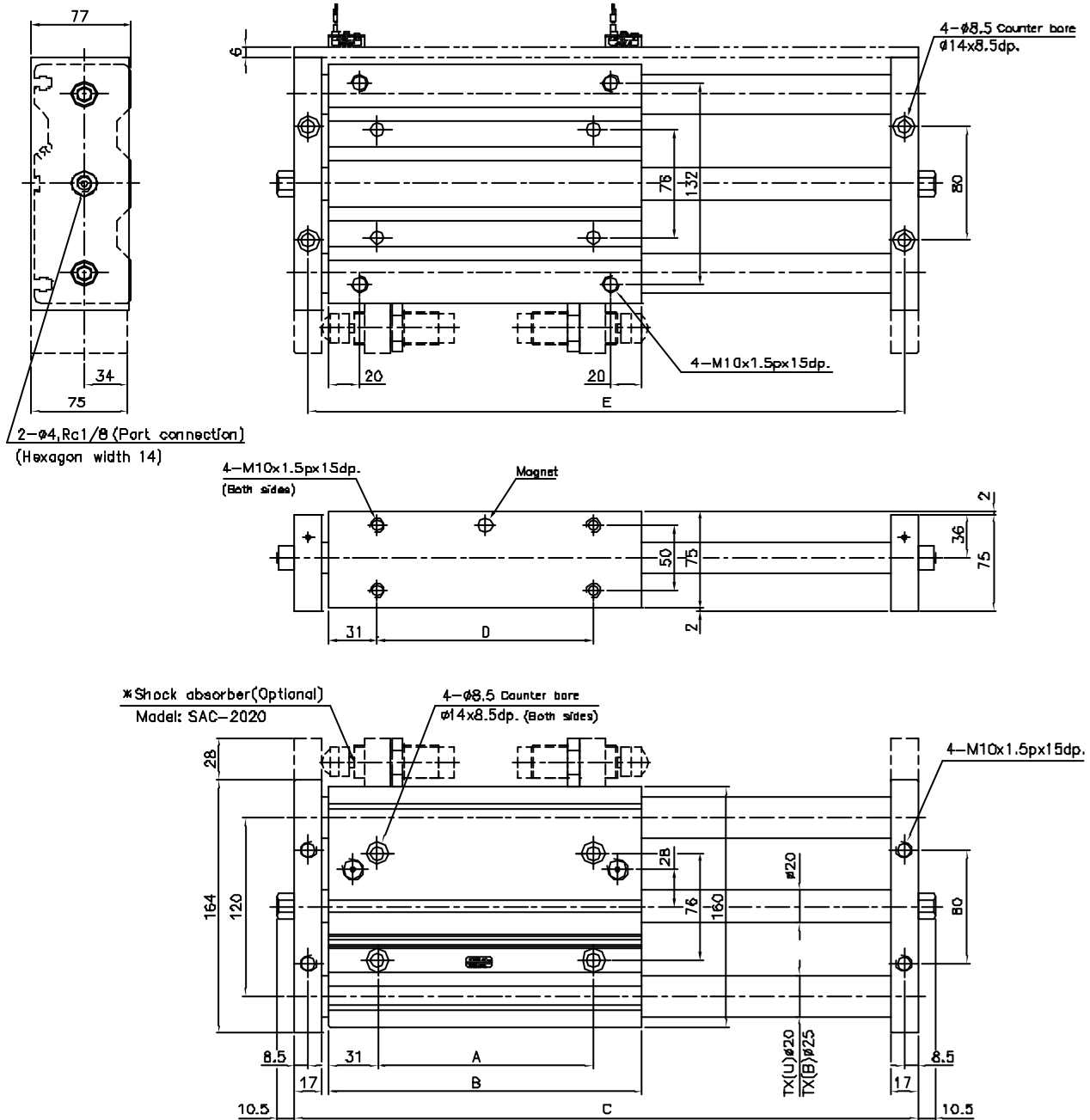
● Dimensional table

Stroke Code	50	75	100	125	150
A	38	63	88	113	138
B	98	123	148	173	198
C	194	244	294	344	394
D	38	63	88	113	138
E	177	227	277	327	377

TX(U) SERIES TWIN GUIDE SLIDE TABLE

External Dimensions

● TX(U) Ø63



● Dimensional table

Stroke Code	50	75	100	125	150
A	38	63	88	113	138
B	100	125	150	175	200
C	196	246	296	346	396
D	38	63	88	113	138
E	179	229	279	329	379



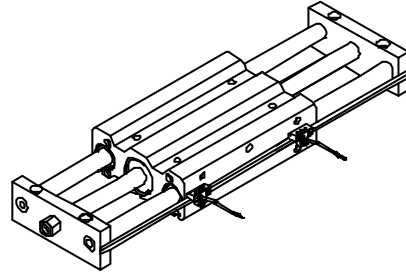
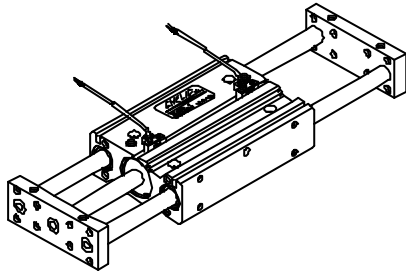
TWIN-GUIDE SLIDE TABLE- WITH SENSOR

Sensor switch operating range and sensing location

■ Sensor installation

● STG

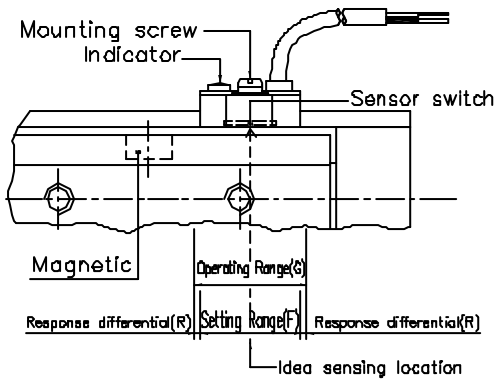
TX



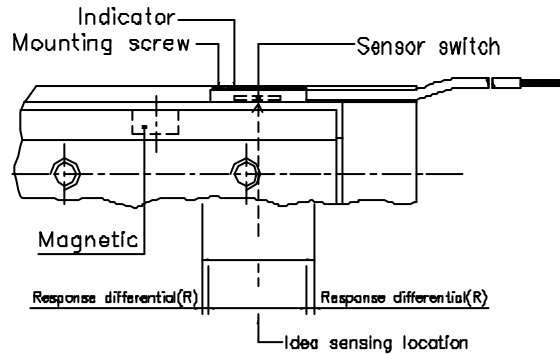
Note: The CS-30E need appoint specially.

■ Sensor operating range/Sensing location

● CS-30E(F)



● CS-9D(B)



■ Operating range

Sensor is fixed on the cylinder body. The magnetic piston head will activate the sensor when it enters the operating range.

■ Setting range

When piston head moves the switch setting and adjustment will be based on the responding range generated by the magnetic field and the switch. (Please refer to the right table.)

Unit: mm

Model	CS-30E(F)		CS-9D(B)	
	Setting range(F)	Response differential(R)	Setting range(F)	Response differential(R)
ø12	10	1	10	1
ø16	7	1	7	1
ø20	8	1	8	1
ø25	12.5	1	12.5	1
ø32	11	1.2	11	1
ø40	13	1.2	13	1.2
ø50	12	1.4	10	1.3
ø63	13	1.4	13	1.4

■ Connection

