

MAGNETCYLINDER
(exkl. styrning)
Diameter 15, 20, 25, 32mm

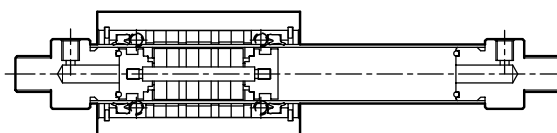


Tekniska data för serie

MRD



■ Internal structure



Design och funktion

Parallellgripdon diameter 12 - 20mm

■ Theoretical force table

Unit : kgf

Bore size mm	Action	Piston area cm ²	Air pressure (kgf/cm ²)						
			1	2	3	4	5	6	7
15	Push	1.76	—	3	5	7	8	10	12
20	Push	3.14	—	6	9	12	15	18	21
25	Push	4.90	—	9	14	19	24	29	34
32	Push	8.04	—	16	24	32	40	48	56

Note: The above data are for reference only. When come to actual practice, frictional and the mechanical efficiency have to be taken into consideration. (About 70%~80%)

■ Specification

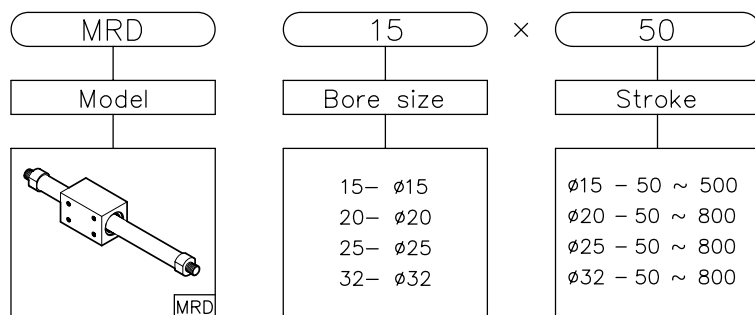
Item	Bore size (mm)	15	20	25	32
Operation		Double acting cylinder			
Fluid		Air			
Pressure range Kg/cm ² (Kpa)		1.5~7 (150~700)			
Max. service pressure kg/cm ² (Kpa)		9.5(950)			
Range of service temperature °C		0~60			
Range of service speed mm/sec		50~500			
Lubrication		Free			
Adjustable stroke		-10~0			
Port size		M5	PT 1/8"		

■ Standard stroke table (MRD series)

Unit: mm

Bore size (mm)	Standard stroke	Max. stroke
ø15	100 · 200 · 300 · 350 · 400 · 450 · 500	700
ø20	100 · 200 · 300 · 350 · 400 · 450 · 500 · 600 · 700 · 800	1000
ø25	100 · 200 · 300 · 350 · 400 · 450 · 500 · 600 · 700 · 800	1000
ø32	100 · 200 · 300 · 350 · 400 · 450 · 500 · 600 · 700 · 800	1000

■ How to order



Single rod rodless cylinder



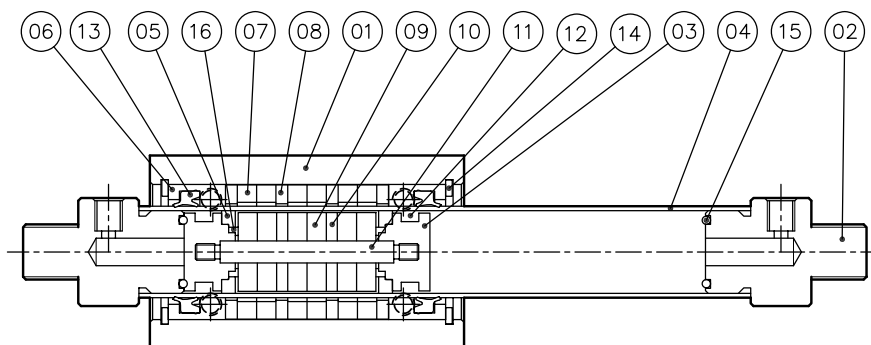
MAGNETCYLINDER
(exkl. styrning)
Diameter 15, 20, 25, 32mm



Tekniska data för serie

MRD

■ Internal structure



■ Material of major parts list

No.	Item	Material	No.	Item	Material
01	Body	Aluminium	11	Piston joiner	Stainless steel
02	Flange	Aluminium	12	Piston packing	Synthetic rubber (NBR)
03	Piston	Stainless steel	13	Rod packing	Synthetic rubber (NBR)
04	Cylinder tube	Stainless steel	14	Snap	Alloy steel
05	Wear ring	Teflon	15	Cushion O-Ring	Synthetic rubber (NBR)
06	Rod piston holder	Plastic steel	16	Packing	Rubber
07	Magnetic	Rare earth metals			
08	Inner yoke	Iron			
09	Piston magnetic	Rare earth metals			
10	Outer yoke	Iron			

Note: Hard anodised cylinder body.

■ Packing and O-Ring list

Item	Piston packing	Rod packing	Cushion O-Ring
Number	2	2	2
Bore size mm			
ø15	DYP-15	PDU-17x22.4	10x1.5
ø20	DYP-20	PDU-21x28.3	-
ø25	PPY-25	PDU-26x34.4	-
ø32	PPY-32	PDU-33.2x45.4	-

Note: Piston packing and rod packing all adopt import parts. (MITSUBISHI, SAKAGAMI and same grade)

Bästa möjliga partner gör skillnad



MAGNETCYLINDER

(exkl. styrning)
Diameter 15, 20, 25, 32mm

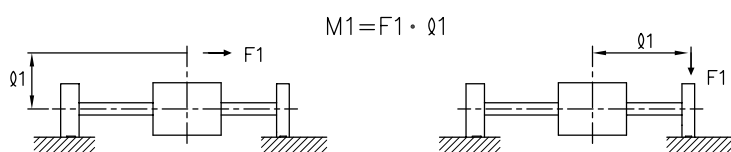


Tekniska data för serie

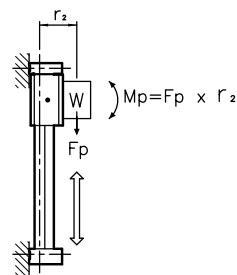
MRD

■ The calculation method of the allowed motionless load

● Horizontal plane load



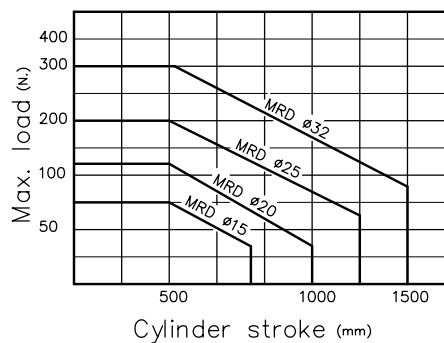
● Vertical load



■ Allowable load and torque Unit: N. (Kgf · m)

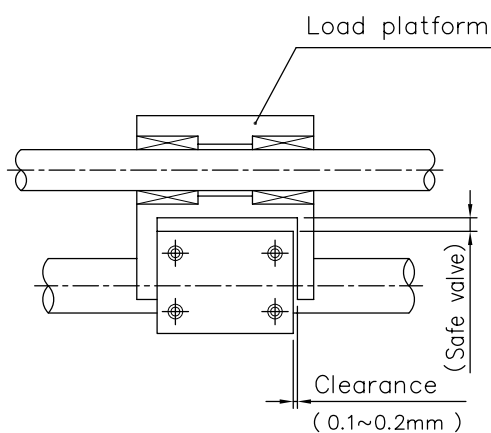
Bore size mm	Horizontal plane load W N. (Kgf)	Horizontal side load My	Vertical load Mp
ø15	69 (7.0)	0.4	1.18
ø20	108 (11.0)	1.0	2.45
ø25	181 (18.5)	1.8	3.92
ø32	294 (30.0)	3.1	8.83

■ Load and stroke characteristic



■ Mounting type

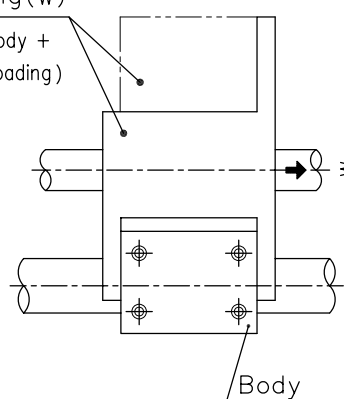
● Horizontal plane load



● Vertical load

Allowable loading (w)

(Weight of moving body +
Weight of load = Loading)



⚠ Note:

The moving slide block of cylinder should offer indirect load with connector only for moving, avoid direct load to cause cylinder winding and badly operating.

MAGNETCYLINDER
(exkl. styrning)
Diameter 15, 20, 25, 32mm

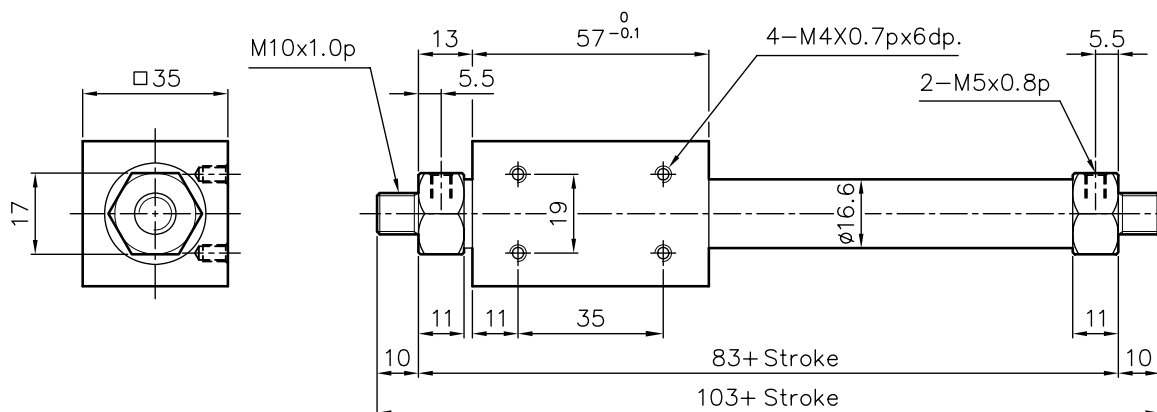


Tekniska data för serie

MRD

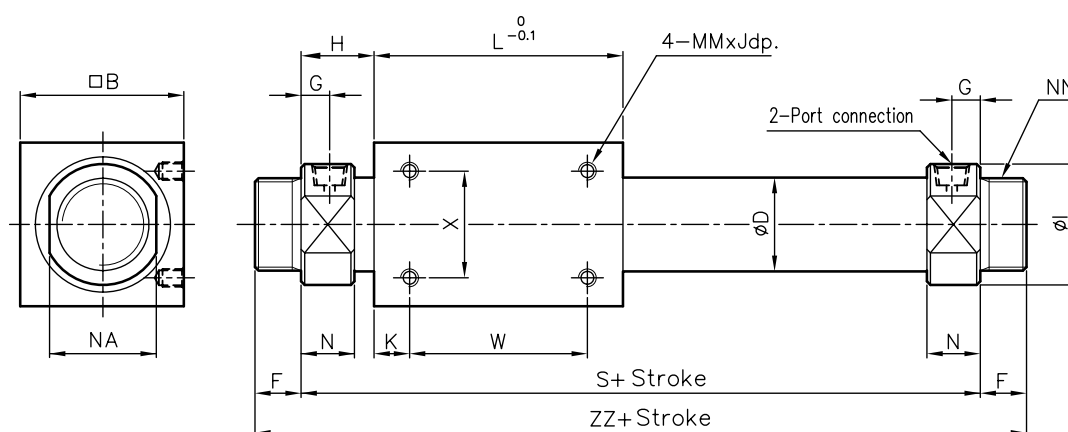
●MRD 15

MRD 15 x ST



●MRD 20~32

MRD x ST



Bore size	Max. stroke	Tube size	□B	∅D	F	G	H	I	K	L	MMxJ	N	NA	NN	S	W	X	ZZ
∅20	~1000	PT 1/8	36	21.4	13	8	20	28	8	66	M4x0.7x6	15	24	M20x1.5	106	50	25	132
∅25	~1000	PT 1/8	46	26.4	13	8	20.5	34	10	70	M5x0.8x8	15	30	M26x1.5	111	50	30	137
∅32	~1000	PT 1/8	60	33.6	16	9	22	40	15	80	M6x1.0x8	17	36	M26x1.5	124	50	40	156

