

Kopplingstillbehör
Serie A



Material:

Förnicklad mässing

Gänga:

Konisk och cylindrisk
enligt DIN 3852 (Del1 & Del2)

Gänganslutning:

M5-R1"

Media:

Luft, Vatten, Olja, Ånga etc.

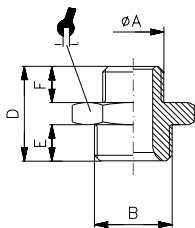
Max temperatur

+150°C

Max.tryck:

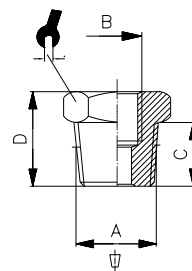
Beroende på modell 20...100bar

A1 Dubbelnippel cylindrisk



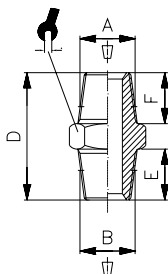
Art.nr	A	B	D	E	F		
53010	M5	M5	11,5	4	4	8	100
53020	M5	R1/8	14,5	6	4	14	100
53030	R1/8	R1/8	16,5	6	6	14	100
53040	R1/8	R1/4	19	8	6	17	100
53050	R1/8	R3/8	20	9	6	19	100
53060	R1/4	R1/4	21	8	8	17	100
53070	R1/4	R3/8	22	9	8	19	100
53080	R1/4	R1/2	23,5	10	8	24	100
53090	R3/8	R3/8	23	9	9	19	100
53100	R3/8	R1/2	24,5	10	9	24	50
53110	R1/2	R1/2	25,5	10	10	24	50

A4 Reducering utv/inv, konisk



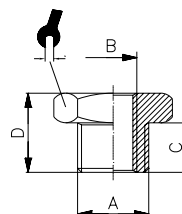
Art.nr	A	B	C	D		
53510	R1/4	R1/8	11	16	14	100
53520	R3/8	R1/8	11,5	16,5	17	100
53530	R3/8	R1/4	11,5	16,5	17	100
53545	R1/2	R1/8	14	19,5	22	50
53550	R1/2	R1/4	14	19,5	22	50
53560	R1/2	R3/8	14	19,5	22	50
53568	R3/4	R3/8	16,5	23,5	27	25
53570	R3/4	R1/2	16,5	23,5	27	50
53572	R1	R3/4	19	26,5	34	25
53574	R1	R1/2	19	26,5	34	25

A2 Dubbelnippel konisk



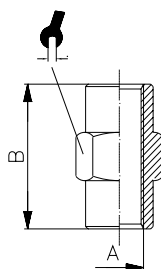
Art.nr	A	B	D	E	F		
53210	R1/8	R1/8	19,5	7,5	7,5	12	100
53220	R1/8	R1/4	23,5	11	7,5	14	100
53230	R1/8	R3/8	24	11,5	7,5	17	100
53231	R1/8	R1/2	27	14	7,5	22	100
53240	R1/4	R1/4	27	11	11	14	100
53250	R1/4	R3/8	27,5	11,5	11	17	100
53260	R1/4	R1/2	30,5	14	11	22	100
53270	R3/8	R3/8	28	11,5	11,5	17	100
53280	R3/8	R1/2	31	14	11,5	22	100
53290	R1/2	R1/2	33,5	14	14	22	50
53300	R1/2	R3/4	37,5	16	14	27	50
53310	R3/4	R3/4	40	16,5	16,5	27	25
53311	R3/4	R1	43	19	16,5	34	25
53313	R1	R1	45,5	19	19	34	25

A4/Z Reducering utv/inv, cylindrisk



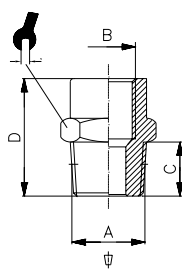
Art.nr	A	B	C	D		
53610	R1/8	M5	6	10,5	14	100
53620	R1/4	R1/8	8	13	17	100
53630	R3/8	R1/8	9	14	19	100
53640	R3/8	R1/4	9	14	19	100
53655	R1/2	R1/8	10	15,5	24	100
53660	R1/2	R1/4	10	15,5	24	50
53670	R1/2	R3/8	10	15,5	24	50
53671	R3/4	R3/8	12	17,5	30	50
53672	R3/4	R1/2	12	17,5	30	50

A3 Muff



Art.nr	A	B		
53410	M5	11	8	100
53420	G1/8	15	14	100
53430	G1/4	22	17	100
53440	G3/8	24	22	100
53450	G1/2	30	26	50
53451	G3/4	31	32	50

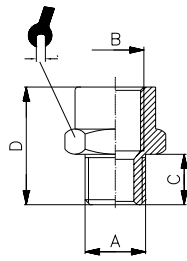
A5 Förstoring inv/utv, konisk



Art.nr	A	B	C	D		
53710	R1/8	R1/8	7,5	20	14	100
53720	R1/8	R1/4	7,5	22	17	100
53730	R1/8	R3/8	7,5	22,5	22	100
53740	R1/4	R1/4	11	26	17	100
53750	R1/4	R3/8	11	27	22	100
53760	R1/4	R1/2	11	30	26	50
53770	R3/8	R3/8	11,5	27,5	22	100
53780	R3/8	R1/2	11,5	30,5	26	50
53790	R1/2	R1/2	14	33	26	50
53791	R1/2	R3/4	14	35	32	50

A5/Z

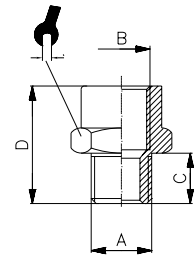
Förstoring inv/utv, cylindrisk



Art.nr	A	B	C	D		
53810	M5	R1/8	4	14,5	14	100
53820	R1/8	R1/8	6	16	14	100
53830	R1/8	R1/4	6	19,5	17	100
53840	R1/8	R3/8	6	21	22	100
53850	R1/4	R1/4	8	22	17	100
53860	R1/4	R3/8	8	22,5	22	50
53870	R1/4	R1/2	8	26	26	100
53880	R3/8	R3/8	9	23,5	22	100
53890	R3/8	R1/2	9	27	26	50
53900	R1/2	R1/2	10	28	26	50

A7/OR Insex

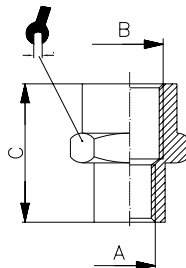
Propp, O-ring



Art.nr	A	B	L	ØD		
54112	M5	4	7	8	2,5	50
54122	R1/8	5,8	8,3	14	5	50
54132	R1/4	7,5	10	17	6	50
54142	R3/8	9,1	12,5	20	8	25
54152	R1/2	11	14,5	26	10	25

A6

Muff, förstoring



Art.nr	A	B	C		
54010	M5	R1/8	13	14	100
54020	R1/8	R1/4	19	17	100
54030	R1/8	R3/8	20	22	50
54031	R1/8	R1/2	24	24	100
54050	R1/4	R3/8	23	22	50
54060	R1/4	R1/2	25	24	50
54070	R3/8	R1/2	27,5	24	50
54072	R1/2	R1	39	40	50
54074	R3/4	R1/2	30	30	50
54075	R3/4	R1	39	40	50

A7/i

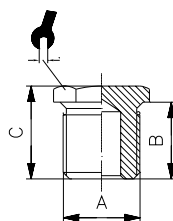
Propp, Insex



Art.nr	D1	L1	L2	S1	
54170	R1/8	7,5	6	5	100
54175	R1/4	11	8	6	100
54180	R3/8	11,5	8	10	50
54185	R1/2	14	8	10	50

A7

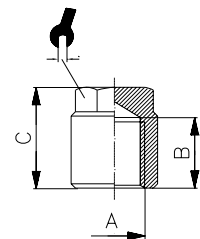
Propp, inkl. plantätning D14



Art.nr	A	B	C			
54111	M5	4	7,5	8	100	
54121	R1/8	6,5	11	14	100	
54131	R1/4	8	13	17	100	
54141	R3/8	9	14	19	100	
54151	R1/2	10	15,5	24	50	
54160	R3/4	11	15,5	14	30	25
54161	R1	12	17	16	40	25

A8

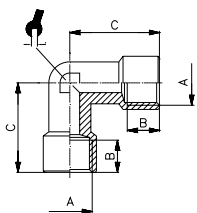
Huv



Art.nr	A	B	C		
54210	R1/8	7,5	11	12	100
54220	R1/4	11	19	14	100
54230	R3/8	11,5	20	17	50
54240	R1/2	15	22	19	50

A9

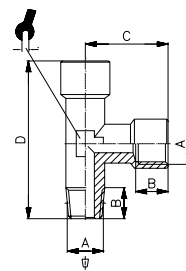
Vinkelrör inv/inv



Art.nr	A	B	C		
54310	R1/8	8	21	10	100
54320	R1/4	11	25,5	13	50
54330	R3/8	11,5	28	17	25
54340	R1/2	14	35	21	25
54341	R3/4	16,5	36,5	27	25
54342	R1	19	45	30	25

A13

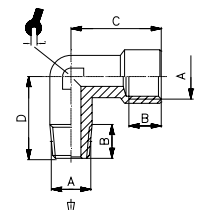
T-rör inv/utv



Art.nr	A	B	C	D		
54710	R1/8	8	21	40	10	100
54720	R1/4	11	25,5	49,5	13	50
54730	R3/8	11,5	28	54,5	17	25
54740	R1/2	14	35	67	21	25
54741	R3/4	16,5	36,5	68,5	27	10
54742	R1	19	45	84	30	10

A10

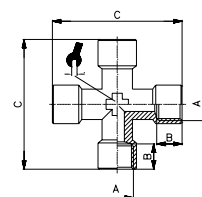
Vinkelrör inv/utv



Art.nr	A	B	C	D		
54420	R1/8	8	21	19	10	100
54430	R1/4	11	25,5	24	13	50
54440	R3/8	11,5	28	26,5	17	25
54450	R1/2	14	35	31,5	21	25
54451	R3/4	16,5	36	32	27	10
54452	R1	19	45	39	30	10

A14

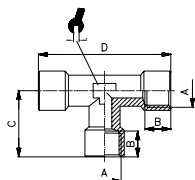
Korskoppling inv



Art.nr	A	B	C		
54810	R1/8	8	42	10	25
54820	R1/4	11	51	13	25
54830	R3/8	11,5	56	17	25
54831	R1/2	14	70	21	25

A11

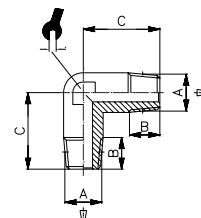
Vinkelrör inv



Art.nr	A	B	C	D		
54510	R1/8	8	21	42	10	100
54520	R1/4	11	25,5	51	13	50
54530	R3/8	11,5	28	56	17	25
54540	R1/2	14	35	70	21	25
54541	R3/4	16,5	36	73	27	10
54542	R1	19	45	90	30	10

A15

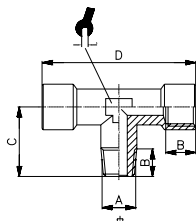
Vinkelrör utv



Art.nr	A	B	C		
54910	R1/8	8	19	10	100
54911	R1/4-R1/8			13	50
54920	R1/4	11	24	17	25
54925	R3/8	11,5	26,5	21	25
54930	R1/2	14	31,5	27	10
54931	R3/4	14,5	32	30	10
54932	R1	16,8	39		

A12

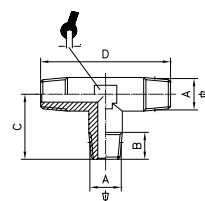
T-rör, inv/utv



Art.nr	A	B	C	D		
54620	R1/8	8	19	42	10	100
54630	R1/4	11	24	51	13	50
54640	R3/8	11,5	26,5	56	17	25
54650	R1/2	14	31,5	70	21	25
54651	R3/4	16,5	32	73	27	10
54652	R1	19	39	90	30	10

A16

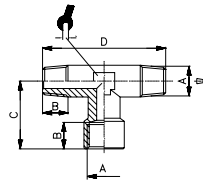
T-rör utv



Art.nr	A	B	C	D		
55010	R1/8	8	19	38	10	100
55020	R1/4	11	24	48	13	50
55025	R3/8	11,5	26,5	53	17	25
55030	R1/2	14	31,5	63	21	25
55031	R3/4	14,5	32	64	27	10
55032	R1	16,8	39	78	30	10

A17

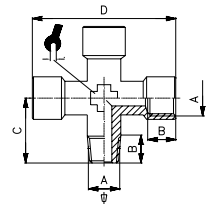
T-rör inv/utv



Art.nr	A	B	C	D		
55110	R1/8	8	21	38	10	100
55120	R1/4	11	25,5	48	13	50
55130	R3/8	11,5	28	53	17	25
55140	R1/2	14	35	63	21	25
55141	R3/4	14,5	36,5	64	27	10
55142	R1	16,8	45	78	30	10

A20

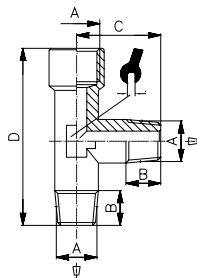
T-rör inv/utv



Art.nr	A	B	C	D		
55510	R1/8	8	19	42	10	25
55520	R1/4	11	24	51	13	25
55525	R3/8	11,5	26,5	56	17	25
55530	R1/2	15	31,5	70	21	25

A18

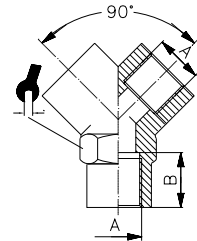
T-rör inv/utv



Art.nr	A	B	C	D		
55205	R1/8	8	19	40	10	100
55210	R1/4	11	24	49,5	13	50
55215	R3/8	11,5	26,5	54,5	17	25
55220	R1/2	14	31,5	67	21	25
55225	R3/4	14,5	32	68,5	27	10
55230	R1	16,8	39	84	30	10

A23

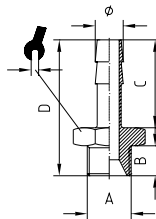
Y-rör inv



Art.nr	A	B		
55810	R1/8	8	14	50
55820	R1/4	11	17	50
55830	R3/8	11,5	22	25
55835	R1/2	14	26	25

A19

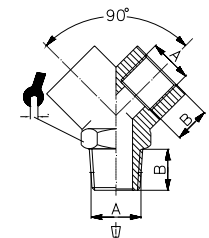
Slangnippel, Utv. R-gänga
Inkl.tätning D14



Art.r	Ø	A	B	C	D		
55274	2,5	M5	5	9	16	8	
55279	3	M5	5	9	16	8	
55284	4	M5	5	9	16	8	
55309	7	R1/8	20	6	30	14	
55319	7	R1/4	20	8	33	17	
55329	9	R1/8	20	6	30	14	
55339	9	R1/4	20	8	33	17	
55349	9	R3/8	20	9	34	19	
55359	12	R1/4	20	8	33	17	
55369	12	R3/8	20	9	34	19	
55379	12	R1/2	22	10	37,5	24	
55391	14	R1/4					
55401	14	R3/8					
55411	14	R1/2					
55419	17	R3/8	9	24	38	19	
55429	17	R1/2	10	24	39,5	24	
55446	20	R1/2					

A24

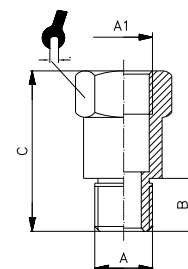
Y-rör inv/utv



Art.nr	A	B		
55910	R1/8	8	14	50
55920	R1/4	11	17	50
55930	R3/8	11,5	22	25
55940	R1/2	14	26	25

A25

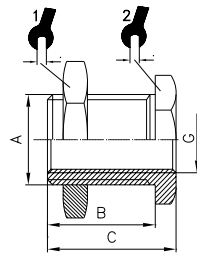
Förlängning inv/utv






Art.nr	A	A1	B	C		
56010	R1/8	R1/8	6	22	14	100
56020	R1/8	R1/8	6	42	14	100
56030	R1/4	R1/4	8	35	17	100
56040	R1/4	R1/4	8	51	17	100

A26

Skottgenomföring



Art.nr	G	A	B	C			
56060	M5	M10x1	10,5	14	14	14	100
56070	R1/8	M16x1,5	14	18	22	19	100
56080	R1/4	M20x1,5	21	25	27	24	100
56090	R3/8	M26x1,5	21	26	32	30	50
56100	R1/2	M28x1,5	27	33	36	32	25